



O'Neill Angus Farm

Cow Herd Dispersal



Noon • Saturday • December 3, 2016 • Logan, Iowa

Donor Cows • Cow/Calf Pairs • Heifer Calves • Bull Calves
Yearling and Two-Year-Old Bulls • Herd Sires • Embryos • Semen

Welcome



Jim & Ardyce O'Neill - Married 56 years on 9-18-16.



O'Neill Angus Farm

Jim & Ardyce O'Neill and Family
3270 Reading Trail • Logan, IA 51546
(712) 644-2062 • Cell (402) 680-3171
Phone/Fax (712) 644-2058
Website: oneillangusfarm.com
Email: onlangus@longlines.com
Cow Herd: Matt Hotz & Jordan O'Neill

Ardyce joined the Iowa Angus Auxiliary and the American Angus Auxiliary in the mid 70's. She was the coordinator for many years for the Iowa and American Angus Beef Promotion programs. She was President of both the Iowa and American Angus Auxiliaries. One of her greatest moments was being awarded with the Distinguished Woman's Award. Thank you Iowa Angus and everyone. Ardyce also helped coordinate the first cook-off and many others which she greatly enjoyed at the National Junior Angus Shows.

Welcome

We are proud to invite you to the O'Neill Cow Herd Dispersal of cows 9 years of age and under with their calves. It is with mixed feelings that we do this. However, I am 79 years old and it is time.

I feel we are entering one of the most exciting times ever in the beef cattle business. Cow numbers are down and we need to rebuild the U.S. beef cow herd, but rebuild with the highest quality ever with sound, functional cattle that gain with feed efficiency and carcass quality that bring premiums.

I am excited with Donald Trump as our President Elect. He has promised to get our trade under control. We cannot import the billions of pounds we do from South America which comes into our country without the rigid inspection of U.S. beef. I am proud of our packers with the cleanliness and quality of the job they do with our U.S. beef. It will take a lot more beef in our country to meet the demand of a high quality product for the consumer. O'Neill Angus has dedicated their life to producing the type of cattle that grows and gains with feed efficiency and carcass quality of 99.7% to 100% Choice and Prime for our commercial customers in a product of high cutability, with less excess fat, extra marbling and superior taste.

We are selling a tremendous set of bulls that will be two years old this spring, fall yearling bulls and one of our best calf crops ever with the bull and heifer calves selling alongside their mothers. Two full brothers and a fall brother-in-blood sell to O'Neills Black Bardolier, one of the most exciting bulls we have ever raised. Recently, we have sold the Australian and New Zealand semen rights to Cory Ireland in Australia. Semen rights have just sold to the UK and the EU to Grahm Massie of Blelock Angus in Scotland for \$30,000. Many of our cattle have an extra rib on each side.

All of our great cows and super donors that sell are 9 years old and younger including the dam of Black Bardolier plus his two full sisters. Also selling is the dam of O'Neills Geronimo and the O'Neills Delia 731 cow. These two females have proven themselves as invaluable foundation donor cows. Many more super donors will sell!

Buy with confidence and raise cattle that excel in the economic traits for extra profit. They will sell with the O'Neill guarantee that they always have. Come and view our cattle anytime, you are always welcome.

A warm and special thank you is extended to all of our customers for their many years of support. Please forgive me if I didn't get everyone's name in the sale book as a buyer. With our health problems, it has made some things extremely difficult. Many thanks to our family: Jordan and Mellisa O'Neill, Matt Hotz, and J.C. O'Neill for all their help throughout the year. Also thanks to Perry Staley who is in charge of upkeep. Most of all, I want to thank my wife, Ardyce, who has been very supportive for all of these years. Ardyce has been an active and important part of O'Neill Angus Farm. Not only has she been an essential part of our family business, she has provided a valuable contribution to the Angus breed from her involvement in both the Iowa and American Angus Auxiliary.

If you are unable to attend the sale, Live Auctions will be broadcasting the sale live. You can go through me, Live Auctions or any of the sale consultants listed in this sale book when purchasing your cattle. We will guarantee the cattle will suit you or you don't own them. Looking forward to seeing you sale day, December 3rd. If you have questions, please feel free to call me at (712) 644-2062 or (402) 680-3171 (Cell). We are extremely proud of our life's work and it is time to turn our program over to you to build greater things in the future. God Bless.

*Thank you so much,
Jim and Ardyce O'Neill*

O'NEILL TIME-TESTED COW FAMILIES:

Royal Lady - Pages 1 through 16

Delia - Pages 17 through 27

Eraline - Pages 28 through 43

Blackcap Lady - Pages 44 through 47

Rachel - Page 48 through 51

Queen Anne - Page 51

Lady Ann - Page 51

Ellen - Page 52

Queen - Page 52

Blackette - Page 53

Eisa Erica - Page 53

Barbara Belle - Pages 54 and 55

O'Neill Angus Farm Cow Herd Dispersal

Noon • Saturday • December 3, 2016 • Logan, Iowa

SALE DAY PHONES:

Jim O'Neill (712) 644-2062 • (402) 680-3171
(712) 644-2058

AUCTIONEER: Al Conover (515) 491-8078

SALE MANAGER: American Angus Hall of Fame
(816) 532-0811

Tom Burke Kurt Schaff Jeremy Haag
(816) 853-2697 (816) 520-6447 (816) 516-1309

Buyers unable to attend the sale may send their bids to the Sale Manager, Regional Manager, Field Representatives, Auctioneer or Jim O'Neill.

LIVESTOCK PUBLICATION REPRESENTATIVES:

Adam Conover, *Angus Journal* (816) 676-8560
Jerry Cassady, *Angus Journal* (816) 383-5100
Mike Sorenson, *Midwest Marketer* (641) 745-7949
Grant Conover, *Livestock Plus* (515) 419-1004
Marty Couch, Special Assignment (660) 349-9320

DIRECTIONS TO THE SALE SITE:

3270 Reading Trail • Logan, IA 51546

Exit 21 off I-680 (Logan/Beebeetown)

2 miles north to Beebeetown, 2 1/2 miles east of Beebeetown on 335th Street, 1 mile north on Reading Trail.

OR: Exit #28 off I-680, Hwy 191 (Neola/Persia), 1 1/2 miles north to 335th St. (F66), 6.3 miles west on 335th St. to Reading Trail. 1 mile north to O'Neill Farm. Look For Signs

CONSULTANTS:

Ed Richardson (806) 930-5662
Ed Spencer (402) 510-3276
Bobby Spencer (712) 592-1180

ACCOMMODATIONS:

Super 8 Motel, Missouri Valley, IA - (712) 642-4788
Days Inn, Missouri Valley, IA - (712) 642-4003
Super 8 Motel, Walnut, IA - (712) 784-2221
Hampton Inn, Council Bluffs, IA - (712) 328-2500

TERMS AND CONDITIONS: Cattle will sell under the suggested Terms and Conditions of the American Angus Association (http://www.angus.org/Pub/suggested_sale_terms.pdf).

SUPPLEMENTAL INFORMATION: A supplemental sheet will be available sale day with complete and up-to-date information. Announcements from the auction block take precedence over sale book information.

HERD HEALTH: All cattle will be accompanied by proper health certificates for immediate shipment. All bulls will be semen tested and will be vaccinated, ready to breed cows.

TRUCKING: Truckers believed to be reliable will be available to assist you in shipping your purchases.

LIVESTOCK MORTALITY INSURANCE: To properly insure your investment, James Bessler will be available to assist you with mortality insurance. (815) 762-2641

FOOD AND REFRESHMENTS: Will be available sale day.

Sale book prepared by the Sale Managers,



TOM BURKE, KURT SCHAFF, JEREMY HAAG, AMERICAN ANGUS HALL OF FAME, At the WORLD ANGUS HEADQUARTERS, PO Box 660, Smithville, MO 64089-0660.
Phone: (816) 532-0811
Fax: (816) 532-0851.
E-Mail: angushall@earthlink.net
www.angushall.com

Visit the *Angus Journal* Web site, www.angus.media and view this sale book online. References: *American Angus Association*®, *AHIR*®, *AngusSource*®, *CAB*®, *Pathfinder*®. EPDs current as of Nov. 11, 2016. Updated EPDs can be viewed online at www.angus.org.

LiveAuctions.TV

Real-time bidding via the Internet for this sale. Live audio and live video will allow buyers to bid on animals just as if they were present at the sale. Buyers must create an account and request a buyer number. Instructions are available to walk you through the account set-up process. Web address: www.liveauctions.tv. E-mail address: brad@liveauctionstv.com. Contact: Brad Fahrmeier (816) 392-9241.

COMMENTS FROM THE SALE MANAGER:

THE ONLY HERD OF ITS KIND IN THE WORLD!

For 65 consecutive years, over a span of five generations, the O'Neill family has led the way in the Angus breed. Since day one, commercial cattlemen have found O'Neill Angus the place to buy bulls that sire extra pounds of beef. Since day one, cow/calf producers who have fed their own cattle have found that an O'Neill bull was a must.

The O'Neill herd has been built on a solid foundation of great female families. Under the guidance of Jim O'Neill, his genetics have been endorsed by leading breeders around the world. O'Neill Angus has proven to be a world leader on the Angus stage. O'Neill Angus is the first place of Angus with that extra rib-length weighs.

In this sale genetics will be offered like never before. It will be your last opportunity to take advantage of this master plan of producing cattle that are sound and profitable for commercial and purebred cattlemen around the world. This will be a "do not miss" Angus opportunity.

We are looking forward to seeing you at this event.

Sincerely,



Tom Burke
(816) 853-2697



Kurt Schaff
(816) 520-6447



Jeremy Haag
(816) 516-1309

O'NEILL ANGUS FARM -



Clinton & Ellen O'Neill - Founders of O'Neill Angus Farm.

Sixty-five years ago my father and I started our herd with the purchase of two great Earl Marshall bred females, the Delias and the Eralines. This was in 1951 when the very small cattle were popular. My father hated cattle that didn't grow and gain in the feedlot. We wanted cattle that would make money for the commercial cattleman. These first two females were deep bodied, thick Angus cows with great udders that were too big for the mainstream of the breed at that time. So my father was a major part of our early years. We started small in numbers, buying the best bulls we could afford and keeping their best daughters. A cousin, Bill Killpack, had a lot to do with the guidance of our herd and in 1955 we purchased a group of cows from him and his father's dispersion sale. Every female we added to our herd was rich in the blood of Earl Marshall, King of Sires. We also purchased Wil Jim Eileenmere 10, a grandson of Eileenmere 1032, the 1949 International Champion. This bull added frame and scale leaving tremendous daughters.

He was followed by lowana Bardolier 6, a thick growth bull that went back to Black Bardolier in every line of his pedigree and then on back to Earl Marshall. His daughters crossed extremely well with Ankonian Jing 3, by Ballot of Belledrum and the great Scotch cow, Jill Erica of Fordhouse, which was our next bull purchase. "Jingo 3rd's" five full sisters averaged almost \$25,000 each in the 1963 Ankony Dispersion. He was followed by his maternal brother Ankonian President 23rd, our maternal line breeding program had started. So it was not until the late 60's that our cattle started to become popular. Our first Grand Champion Bull was in 1966 at the Interstate Show and Sale at Yankton, SD. Then in 1969, at the Iowa State Sale we had the top-selling bull and in 1970 we had the three top-selling bulls.

Since that time the tide had changed, the breed was demanding functional cattle, with more frame and pounds. Since 1969 we had the top selling or Grand Champion Bull or Female through 1995 at the Iowa State Sale or Iowa Beef Expo, every year but two. One was in 1971, the year my father passed away, and we did not go and the other was when Knop Angus topped the sale at \$30,000. We layed out the Beef Expo for two or three years and came back with four high-selling Bulls of All Breeds and high-selling Female of All Breeds in 2016 for \$20,000.

In the spring of 1970 we purchased Marshall Pride 514 from Erdman Angus Ranch, Wetonka, SD. This was the last bull my father picked out before he passed away in 1971. A fantastic Earl Marshall bred bull that left a legacy in our herd with his many high sellers and females. Then in the fall of 1972 LeRoy Erdman and Jim Baldridge told me about the Happyvale Angus herd at Stetler, Alberta Canada. In January of 1973 we purchased pick of bulls from the 1973 calf crop at Happyvale for \$10,000 and picked him out at two months of age. His greatest daughter, ONeills Eraline 42, produced Camelot, Renovator, Lady Eraline, ONeills Aberdeen and many more. "72E" had tremendous bone, volume, and thickness with calving ease and milk with excellent feed. His dam, the most powerful cow at Happyvale, was an older cow Earl Marshall bred. This was our pick, our chance of a lifetime. We have intensely linebred this great sire and our herd today is what it is from "72E" as we call him, the Roughage Converter. Several own daughters sell and they are as good as we have. In February 1980 we sold 72E's outstanding son Spartan Grandeur O for \$50,000 for 1/2 interest to Thomas Angus Ranch, Baker, Oregon. 72E produced another son, The Hulk, owned with Erdman Angus Ranch.

In 1979, we purchased Thomas Chaps that was the 1977 Calf Champion in Denver. His son, ONeills Explosion, topped our 1981 sale 2/3 interest at \$33,500. Then in 1981 we made the purchase of Gunston Tall Texas, Prospect Genetic Engineer and Premier Independence KN. They all left their mark with sale toppers and tremendous daughters.

ONeills Camelot, known as the Cattleman's Choice, a calving-ease sire born in 1982 and traveled to the 1985 World Angus Forum, Edmonton, Alberta, Canada along with his maternal brother, ONeills Renovator who with their maternal sister's son, ONeills Excalibur, were the Champion Pair of Bulls. A paternal sister to Camelot stood 2nd in Class to the Reserve Grand Champion Female and had the highest weight per day of age at the Forum. She was linebred and thence from that time on our line-breeding program intensified. From this showing at the Forum, we sold three live bulls to Australia and semen on ONeills Renovator, who dominated Australia through the 80's and early 90's and became known as the International Sire. It was from this showing that our international trade began and has continued. Our son, J.C. O'Neill, had tremendous success showing our cattle through the 80's and 90's and 2000. We owe a great deal to him and also to our daughter Debra, Jordan's mother who passed away in 2003. Camelot was a class winner in the 1984 National Western and the heaviest bull ever shown in Denver in 1985 where the crowd applauded him as he left the ring.



Marshall Pride 514 - O'Neill foundation Pathfinder Sire.



Happyvale Blackcap G 72E - O'Neill foundation Pathfinder Sire.



Thomas Chaps - O'Neill foundation Pathfinder Sire.



ONeills Eraline 42 - Herd sire producing Pathfinder Dam.



O'Neill Camelot - Known as the Cattleman's Choice.



ONeills Renovator - World famous Pathfinder Sire.

- 65 YEARS OF ANGUS ACHIEVEMENT

ONEills Renovator was born in 1983 and was the Iowa Grand Champion Bull in 1985. He was undefeated in class during 1984 at South Dakota Fair, National Junior Angus Show, American Royal and Iowa State Fair.

ONEills Lady Eraline, full sister to "Renovator" produced many champions and top sellers for us. She was twice All American Reserve Grand Champion Udder. She produced the many-time champion, ONEills Exon, that sired the heaviest weight per day of age bulls in the Pen of 3 Show in 1994 and 1995 at Denver. "Exon" sired ONEills Ebony for \$30,000 going to Greg Smith in New Mexico.

The Delia cow family from a daughter of Tall Texas produced the great carcass weight and high marbling performance sire, ONEills Duke, who did well in the show ring and sold to New Haven Farm in the U.S. where he left his mark with fabulous daughters. Duke sired Bear Mtn Lady Eraline 302 in dam who was a full sister to "Renovator" and Lady Eraline. She was Reserve Champion Cow/Calf All American Futurity and Grand Champion Cow/Calf Iowa State Fair in 1995. She was also Grand Champion Female in the 1995 Western National Angus Futurity in Reno.

In 1987 we purchased FV Queen 399, the dam of Baldrige Oscar, to bring in outside genetics. She produced the \$24,000 1/2 interest ONEills Renault by "Renovator" and sold to Olsen Cattle Co. in Texas, Schaff Angus, ND and Rindel Farm, NC.

In 1989 we purchased three outcross cows from Gartner-Denowh in Montana that started three great cow families: Lady Blackcaps that produced ONEills Quality Lad and ONEills Lady Blackcap; the Rachel cow that produced the \$29,500 ONEills Rachel; and the Blackette Lady family that also did extremely well.

In 2004, possibly the greatest all-time sire ONEills Expedition was born to ONEills Delia 715, who is by the legendary Traveler 124 son, Circle Oak Traveler 524, which is the only outcross sire brought in since 1981. Expedition has proven to be a calving-ease sire, that has proven himself as a high feed efficiency sire with excellent feet, great fleshing ability in his daughters with excellent udders, milk and carcass quality. He will fix feet, udders, fleshing ability, feed efficiency, docility, carcass quality cutability and is in the top 5% for \$B, and top 2% for Yield Grade. In 2008, an Expedition son, ONEills Encore, was the sensation of our sale and was the highest-selling bull ever sold in our auctions at \$75,000. He is a full brother to two fabulous sisters who sell as Lots 33 and 34. His dam still has perfect feet and soundness and will be 15 years old on March 1, 2017. She has produced many other fabulous donors and herd sires including two outstanding full brothers to ONEills Expectation, ONEills Adventure K325 owned with Maifeld in Iowa, ONEills Lucky Boy sold to Al Rosendahl and Maifeld in Iowa, ONEills Adventure K426 sold to Kodry Angus in Iowa that has used all of our genetics. We purchased the top cows in the Kodry herd last fall.

Our most exciting history in the last weeks is from the sale of the exclusive breeding rights to Black Bardolier in Australia and New Zealand to Colby Ireland in Australia and also the exclusive breeding rights in Black Bardolier to Blelack Angus in Scotland for the EU and UK for \$30,000. Black Bardolier is a full brother to "Blackhawk" selling as Lot 1A and Lot 1B, "Black Bart" weighing 1,050 lbs. on November 7, 2016. A fantastic full brother-in-blood sells as Lot 2A, ONEills Frontiersman 675.

News Flash: We wish to congratulate Blelack Angus in Scotland, Neal and Graeme Massie for their all-time record selling Angus female in Scotland for \$36,000 gns which converts to \$45,000 U.S. Her bull calf sold for \$10,000 gns. Her name, Blelack Lady Eraline J258, by ONEills Renovator was purchased as an embryo and is a maternal sister to ONEills Lady Eraline 104, Lot 28 in this sale book.

The shows, the sales, and Angus events the last few years by our grandsons Mathew and Jordan are listed in footnotes and are unforgettable. Forgive me for not really completing all 65 years, but our health has made it very hard. The multitude of events over the last 65 years are tremendous. The worldwide acceptance of O'Neill breeding has given us a very high level of satisfaction but the ultimate joy and satisfaction, the most memorable of all is, and always will be, the people--our customers, our friends. Without you - all of you - there would be no history to write.

Before I close this history, I want to mention my mother as she was the driving force behind me. My folks made me independent and work hard, but I do owe them a lot.

God Bless.
Jim & Ardyce O'Neill



**1978 National Junior Angus Show
Premier Breeder**



1987 All-American Master Breeder



1991 Iowa Seedstock Producer of the Year



**ONEills Delia 715 - The potent dam of
herd sires.**



**O'Neill Black Bardolier -
The next generation.**



**ONEills Frontiersman -
A great breeding bull.**



**ONEills Expedition - World famous
proven Pathfinder Sire.**

ONEILLS ROYAL LADY 90



ROYALE BARDOLIER FOREVER 783 - *The maternal great-great-grandam of Lot 1.*



ONEILLS ROYAL LADY 10 - *The maternal great-grandam of Lot 1.*



ONEILLS ROYAL LADY 28 - *The maternal grandam of Lot 1.*



ONEILLS ROYAL LADY 40 - *The dam of Lot 1.*



ONEILLS ROYAL LADY 90 - *Lot 1*

ONEILLS Royal Lady 90

Birth Date: 9-21-2011 Cow +17215152 Tattoo: 891 Tag: 1702 COW

Circle A Adventure 0124

ONEILLS Expedition

#14761330 ONEILLS Delia 715

#SAF 598 Bando 5175

ONEILLS Royal Lady 40

+15083732 +ONEILLS Royal Lady 28

#SAF Focus of ER

+Act Evergreen 8007

+Circle Oak Traveler 524

#+ONEILLS Delia 703

#Bon View Bando 598

+SAF Royal Lass 1002

#DHD Traveler 6807

+ONEILLS Royal Lady 10

CW	+46
MARB	+ .38
RE	+ .65
FAT	- .078
\$W	+46.93

CED	BEPD	WEPD	YEPD	RADG	SC	MILK	\$B
+5 .29	+2.2 .34	+55 .30	+103 .29	+32 .26	+52 .33	+25 .27	+142.56

- Easily one of the greatest females ever bred and produced in the 65-year Angus career of master breeder Jim O'Neill.
- This phenomenal female is the dam of ONEILLS Black Bardolier, the heaviest muscled, highest performing and most promising young bull ever bred by Jim O'Neill who recorded a birth weight of 76 pounds

THE DAM OF ONEILLS BLACK BARDOLIER



J.C. O'Neill ©

**WR 1@122, YR 1@122,
IMF 1@105, RE 1@114**

combined with a 205-day weight of 782 pounds for a weaning ratio of 121 and a 365-day weight of 1,700 pounds for a yearling ratio of 122 along with an IMF score of 5.29 for an IMF ratio of 105 and a 365-day weight ribeye of 18.8 for a ribeye ratio of 114, and he recently sold an international semen interest for an undisclosed O'Neill record valuation.

- The first calf was a daughter who sold for \$10,000 to Jake Clarke and Roger Clausen of Nebraska, plus frozen embryos sold for \$2,600 each in the 2016 National Western Foundation Female Sale.
- Her sons, ONEILLS Blackhawk and ONEILLS Black Bart are headliner herd sire prospects in this auction.
- This great cow is one of the all-time greatest daughters of the total performance and feed-efficiency Pathfinder Sire, ONEILLS Expedition, backed by generations of great producing females tracing to the O'Neill foundation female, Royale Bardolier Forever 783.
- Bred June 7, 2016 to ONEILLS FRONTIERSMAN and exposed to him.



ONEILLS BLACK BARDOLIER - His dam sells as Lot 1.

ONEILLS ROYAL LADY FAMILY



ONEILLS BLACK BARDOLIER - Reference Sire A

ONEILLS ROYAL LADY 90 - The dam of Reference Sire A.



Oneills Black Bardolier [OSF]

Birth Date: 1-15-2015 Bull 18192530 Tattoo: 35

Oneills Frontiersman
17281878 +Oneills Royal Lady Elaine

#SAV Pioneer 7301 #SAV Final Answer 0035 [ROF]
SAV Blackbird 5297 #Oneills Expedition
+Oneills Royal Lady 29

#Oneills Expedition
Oneills Royal Lady 90
+17215152 +Oneills Royal Lady 40

Circle A Adventure 0124
Oneills Delia 715
#+SAF 598 Bando 5175
+Oneills Royal Lady 28

CW	+61
MARB	+ .29
RE	+1.03
FAT	- .021
\$W	+67.57

CED	BEPD	WEPD	YEPD	RADG	SC	MILK	\$B
+4	.34	+2.1	.41	+72	.30	+130	.33
				+34	.31	+77	.45
				+26	.15		+157.72

- FOR REFERENCE ONLY.
- The heaviest muscled, highest performing and most promising young herd sire ever bred and produced in the 65 Angus years of master breeder Jim O'Neill.
- This powerful young bull combines a birth weight of 76 pounds with a 205-day weight of 982 pounds for an individual weaning ratio of 122 along with a 365-day weight of 1,700 pounds for an individual yearling ratio of 122 along with an IMF score of 5.29 for an individual IMF ratio

- of 105 and a 365-day weight ribeye of 18.8 for an individual ribeye ratio of 114, and he ranks in the breed's top one percent for Weaning Weight EPD, Yearling Weight EPD, RADG EPD and \$F, while ranking in the top two percent for Carcass Weight EPD and \$B, and in the top four percent for Ribeye EPD and \$W.
- Oneills Black Bardolier captured the attention of the Angus world while on display in the yards at the 2016 National Western Stock Show where cattlemen marveled at his combination of performance, muscling and structural soundness, and recently sold an international interest for an undisclosed O'Neill record valuation.
- Oneills Black Bardolier is by the great breeding bull, Oneills Frontiersman, and features a linebred pedigree tracing twice to the Pathfinder Sire, Oneills Expedition, and linebred through the flush sisters, Oneills Royal Lady 28 and Oneills Royal Lady 29, with an extended pedigree that also traces multiple times to the O'Neill foundation Pathfinder Sire, Happyvale Blackcap G 72E.
- His valuable service sells.



ONEILLS ROYAL LADY 40 - The maternal grandam of Reference Sire A.



ONEILLS ROYAL LADY 28 - The maternal great-grandam of Reference Sire A.



ONEILLS ROYAL LADY 29 - The paternal great-grandam of Reference Sire A.

ONEILLS ROYAL LADY FAMILY

- The sire of these bulls was the top performance bull of the 2012 O'Neill calf crop and the all-time highest 365-day weight bull ever bred by Jim O'Neill who has proven to be a sensational sire. The dam of these bulls is the phenomenal ONEills Royal Lady 90 who combines progeny weaning and yearling ratios of 122 with progeny IMF and ribeye ratios of 105 and 114, respectively.
- These bulls are linebred to the high-performance feed-efficiency Pathfinder Sire, ONEills Expedition, with a pedigree that also traces to the famous flush sisters, ONEills Royal Lady 28 and ONEills Royal Lady 29.
- Full siblings sold as frozen embryos for \$2,600 each in the 2016 National Western Foundation Female Sale.



ONEILLS BLACKHAWK - Lot 1A

1A ONEills Blackhawk

Birth Date: 1-16-2016		Bull 18564926		Tattoo: 66		Tag: 1702 BULL	
CED	BEPD	WEPD	YEPD	RADG	SC	MILK	
+2	.29	+3.1	.34	+61	.26	+111	.30
				+31	.31	+21	.37
						+23	.15
CW	MARB	RE	FAT	\$W	\$B		
+45	+.23	+.84	-.062	+49.35	+129.51		

- Birth weight 86 pounds.

1B ONEills Black Bart

Birth Date: 3-14-2016		Bull +18585024		Tattoo: 416		Tag: 1702A BULL	
CW	+48						
MARB	+54						
RE	+93						
FAT	-.044						
\$W	+49.03						
\$B	+148.39						
CED	BEPD	WEPD	YEPD	RADG	SC	MILK	\$B
+5	.29	+2.5	.34	+59	.26	+113	.30
				+33	.31	+1.06	.37
						+22	.15

- Birth weight 90 pounds.
- An amazing pair of full brothers to ONEills Black Bardolier, the high-performing, heavy muscled, herd sire prospect who captured the attention of the Angus world while on display at the 2016 National Western Stock Show and recently sold an international interest for an undisclosed O'Neill record valuation.



ONEILLS ROYAL LADY 90 - The dam of Lots 1A, 1B and 1C.

1C ONEills Royal Lady Embryos

Two Frozen Embryos		#SAV Pioneer 7301		#SAV Final Answer 0035 [RDF]			
ONEills Frontiersman		17281878		+ONEills Royal Lady Elaine			
		#ONEills Expedition		Circle A Adventure 0124			
ONEills Royal Lady 90		+17215152		+ONEills Royal Lady 40			
		ONEills Delia 715		#+SAF 598 Bando 5175			
		+ONEills Royal Lady 28					
CED	BEPD	WEPD	YEPD	RADG	SC	MILK	
-1	.51	+4.0	.66	+66	.54	+120	.47
		+2.2	.34	+55	.30	+103	.29
						+32	.26
						+52	.33
						+25	.27
CW	MARB	RE	FAT	\$W	\$B		
+48	+.37	+1.11	+.003	+52.70	+137.89		
+46	+.38	+.65	-.078	+46.93	+142.56		

- Full sibling to ONEills Black Bardolier, ONEills Blackhawk, ONEills Black Bart and to embryos that sold for \$2,600 each in the 2016 National Western Foundation Female Sale.



ONEILLS BLACK BART - Lot 1B

ONEILLS ROYAL LADY FAMILY



ONEILLS ROYAL LADY 64 - Lot 2



ONEILLS ROYAL LADY 40 - The dam of Lot 2.

2

ONEILLS Royal Lady 64

Birth Date: 2-8-2009 Cow +16404853 Tattoo: 109 Tag: 1673 COW

Circle A Adventure 0124

#SAF Focus of ER

+Act Evergreen 8007

+Circle Oak Traveler 524

#+ONEills Delia 703

#+SAF 598 Bando 5175

#Bon View Bando 598

+SAF Royal Lass 1002

#DHD Traveler 6807

+ONEills Royal Lady 10

ONEills Expedition

#14761330 ONEills Delia 715

ONEills Royal Lady 40

+15083732 +ONEills Royal Lady 28

CW	+39
MARB	+ .37
RE	+ .54
FAT	- .061
\$W	+29.65

CED	BEPD	WEPD	YEPD	RADG	SC	MILK	\$B
+1	.32	+2.9	.37	+50	.31	+96	.29
				+32	.26	+41	.32
				+16	.31	+131.95	

- One of the finest producers in the O'Neill program.
- This valued donor is a full sister to the featured Lot 1 cow, ONEills Royal Lady 90, who in turn produced ONEills Black Bardolier, the heaviest muscled, highest performing herd sire prospect in O'Neill history, along with ONEills Blackhawk, ONEills Black Bart, and \$2,600 frozen embryos in the 2016 National Western Foundation Female Sale.
- Another full sister, ONEills Royal Lady 46, produced the \$1,300 top-selling embryos of the 2008 National Western Foundation Female Sale,

- and still another full sister sells as Lot 3.
- The donor dam of this cow sold one-half interest for \$15,000 for a \$30,000 valuation to Maifeld Inc. and she has produced a multitude of outstanding progeny who also include the featured herd sires, ONEills Renovation and ONEills OMAI King.
- This cow excels in high-performance and feed-efficiency genetics, by the proven Pathfinder Sire, ONEills Expedition.
- This cow has earned progeny IMF and ribeye ratios of 104 on four head and her dam records a progeny ribeye ratio of 103 on 33 head evaluated by ultrasound.
- A son, ONEills Pioneer 63, sold one-half interest for \$10,000 to Doug and Lisa Schmidt of North Dakota, and another sold for \$6,000 to Flying J Ranch of Montana with another to Shafer Angus of Nebraska, while two daughters sold for \$6,000 each in 2013, and another daughter, ONEills Royal Lady 137, was selected by Maifeld Inc. in 2016.
- Bred August 11, 2016 to ONEILLS GERONIMO and exposed to him.



ONEILLS ROYAL LADY 46 - Full sister to Lot 2.



ONEILLS ROYAL LADY 90 - Full sister to Lot 2.

ONEILLS ROYAL LADY FAMILY

- A special favorite herd sire prospect among the fall yearling calf crop and a product of the embryo program, by the O'Neill record yearling weight bull, ONeills Frontiersman, with a pedigree tracing twice to both ONeills Expedition and the O'Neill Royal Lady family.
- This royal prospect is a full brother-in-blood to ONeills Black Bardolier who captured the attention of the Angus world while on display at the 2016 National Western and recently sold an international semen interest.



ONEILLS BLACK BARDOLIER - Full brother-in-blood to Lots 2A, 2B and 2C.



ONEILLS FRONTIERSMAN 675 - Lot 2A

2A ONeills Frontiersman 675

Birth Date: 9-18-2015	Bull +18566315	Tattoo: 675	Tag: 1673C BULL	CW			
#SAV Pioneer 7301	#SAV Final Answer 0035 [PDF]			I+43			
ONeills Frontiersman	SAV Blackbird 5297			MARB			
17281878 +ONeills Royal Lady Elaine	#ONeills Expedition			I+.37			
	+ONeills Royal Lady 29			RE			
				I+.83			
	#ONeills Expedition			FAT			
ONeills Royal Lady 64	Circle A Adventure 0124			I-.029			
+16404853 +ONeills Royal Lady 40	ONeills Delia 715			\$W			
	#+SAF 598 Bando 5175			+41.49			
	+ONeills Royal Lady 28			\$B			
				+134.50			
CED	BEPD	WEPD	YEPD	RADG	SC	MILK	\$B
I+0 .05	I+3.5 .05	I+58 .05	I+108 .05	I+.31 .05	I+.38 .05	I+19 .05	+134.50

- Birth weight 78 pounds.

2B ONeills Royal Lady 145

Birth Date: 9-16-2015	Cow +18566117	Tattoo: 645	Tag: 1673B HEIFER	CW			
#SAV Pioneer 7301	#SAV Final Answer 0035 [PDF]			I+43			
ONeills Frontiersman	SAV Blackbird 5297			MARB			
17281878 +ONeills Royal Lady Elaine	#ONeills Expedition			I+.37			
	+ONeills Royal Lady 29			RE			
				I+.83			
	#ONeills Expedition			FAT			
ONeills Royal Lady 64	Circle A Adventure 0124			I-.029			
+16404853 +ONeills Royal Lady 40	ONeills Delia 715			\$W			
	#+SAF 598 Bando 5175			+41.49			
	+ONeills Royal Lady 28			\$B			
				+134.50			
CED	BEPD	WEPD	YEPD	RADG	SC	MILK	\$B
I+0 .05	I+3.5 .05	I+58 .05	I+108 .05	I+.31 .05	I+.38 .05	I+19 .05	+134.50

- Birth weight 75 pounds.

2C ONeills Royal Lady 144

Birth Date: 9-15-2015	Cow +18566322	Tattoo: 625	Tag: 1673A HEIFER	CW			
#SAV Pioneer 7301	#SAV Final Answer 0035 [PDF]			I+43			
ONeills Frontiersman	SAV Blackbird 5297			MARB			
17281878 +ONeills Royal Lady Elaine	#ONeills Expedition			I+.37			
	+ONeills Royal Lady 29			RE			
				I+.83			
	#ONeills Expedition			FAT			
ONeills Royal Lady 64	Circle A Adventure 0124			I-.029			
+16404853 +ONeills Royal Lady 40	ONeills Delia 715			\$W			
	#+SAF 598 Bando 5175			+41.49			
	+ONeills Royal Lady 28			\$B			
				+134.50			
CED	BEPD	WEPD	YEPD	RADG	SC	MILK	\$B
I+0 .05	I+3.5 .05	I+58 .05	I+108 .05	I+.31 .05	I+.38 .05	I+19 .05	+134.50

- Birth weight 75 pounds.

- These flush sisters to ONeills Frontiersman 675 are also full sisters-in-blood to ONeills Black Bardolier, the heaviest muscled, highest performing and most promising herd sire prospect ever bred and produced in the 65-year Angus career of master breeder Jim O'Neill.
- These heifers are by the great breeding bull, ONeills Frontiersman, with a linebred pedigree tracing twice to the Pathfinder Sire, ONeills Expedition, also combining the flush sisters, ONeills Royal Lady 28 and ONeills Royal Lady 29.
- Maternal siblings are highlighted by the \$10,000 ONeills Pioneer 63 and ONeills Royal Lady 137.



ONEILLS ROYAL LADY 137 - Maternal sister to Lots 2A, 2B and 2C.



ONEILLS ROYAL LADY 145 - Lot 2B

ONEILLS ROYAL LADY FAMILY



ONEILLS ROYAL LADY 85 - Lot 3



ONEILLS ROYAL LADY 90 - Full sister to Lot 3.

3 ONEILLS ROYAL LADY 85

Birth Date: 3-5-2011	Cow +17084791	Tattoo: 5Y	Tag: 01-03 COW	CW
Circle A Adventure 0124	#SAF Focus of ER			I+39
ONEILLS Expedition	+Acf Evergreen 8007			MARB
#14761330 ONEILLS Delia 715	+Circle Oak Traveler 524			I+ .42
	#+ONEILLS Delia 703			RE
	#+SAF 598 Bando 5175			I+ .57
ONEILLS Royal Lady 40	#Bon View Bando 598			FAT
#15083732 +ONEILLS Royal Lady 28	+SAF Royal Lass 1002			I- .070
	#DHD Traveler 6807			\$W
	+ONEILLS Royal Lady 10			+34.33

CED	BEPD	WEPD	YEPD	RADG	SC	MILK	\$B
+2	.27	+2.7	.32	+50	.28	+95	.26
I+.31	.05	I+.15	.05	+21	.27	+133.05	

- This tremendous Royal Lady balances a progeny birth ratio of 93 with a progeny weaning ratio of 106 and she is a full sister to the O'Neill donors featured as Lots 1 and 2.
- The \$30,000 valued donor dam of this cow balances a progeny birth ratio of 97 with a progeny weaning ratio of 101 on five natural calves and a progeny ribeye ratio of 103 on 33 head.
- Bred May 24, 2016 to ONEILLS GERONIMO. Exposed to ONEILLS FRONTIERSMAN from June 7, 2016 to July 22, 2016.

3A ONEILLS Absolute 586

Birth Date: 4-5-2016	Bull 18585651	Tattoo: 586	Tag: 0103 BULL	CW
#SAV Pioneer 7301	#SAV Final Answer 0035 (PDF)			N/A
ONEILLS Absolute	SAV Blackbird 5297			MARB
+17876887 ONEILLS Eraline 234	#ONEILLS Expedition			N/A
	+ONEILLS Eraline 231			RE
	#ONEILLS Expedition			N/A
ONEILLS Royal Lady 85	Circle A Adventure 0124			FAT
+17084791 +ONEILLS Royal Lady 40	ONEILLS Delia 715			N/A
	#+SAF 598 Bando 5175			\$W
	+ONEILLS Royal Lady 28			+38.25

CED	BEPD	WEPD	YEPD	RADG	SC	MILK	\$B
I+3	.05	I+2.7	.05	I+51	.05	I+93	.05
N/A	N/A	N/A	N/A	I+23	.05	N/A	

- An April herd sire prospect with a pedigree that blends the time-tested ONEILLS Royal Lady, Eraline and Delia families.
- This son of the great breeding bull, ONEILLS Absolute, is linebred to the Pathfinder Sire, ONEILLS Expedition, from a dam who is a full sister to ONEILLS Royal Lady 90, the featured Lot 1 cow whose progeny include ONEILLS Black Bardolier.



ONEILLS ROYAL LADY 40 - The dam of Lots 1, 2 and 3 and maternal sister to Lot 4.



ONEILLS RENOVATION - Maternal brother to Lots 1, 2 and 3.



ONEILLS OMAI KING - Maternal brother to Lots 1, 2 and 3.

ONEILLS ROYAL LADY FAMILY



ONEILLS ROYAL LADY 72 - Lot 4

ONEILLS FRONTIERSMAN 96 - Lot 4A

ONEILLS ROYAL LADY 72

Birth Date: 1-8-2010 Cow +16689920 Tattoo: 50 Tag: 1674 COW

Circle A Adventure 0124 #SAF Focus of ER
 +Acf Evergreen 8007
 +Circle Oak Traveler 524
 #+ONEills Delia 703

#DHD Traveler 6807 #QAS Traveler 23-4
 #Bemindful Maid DHD 0807
 #+ONEills Renovator
 Royale Bardolier Forever 783

CW	+29
MARB	+0.30
RE	+0.78
FAT	-0.82
\$W	+12.56
\$B	+113.18

CED -2 .28 **BEPD** +3.9 .34 **WEPD** +38 .28 **YEPD** +74 .27 **RADG** +29 .22 **SC** -.07 .30 **MILK** +15 .29

- This Royal Lady donor earned individual IMF and ribeye ratios of 126 and 118, respectively, and records a progeny ribeye ratio of 105 on two head.
- This cow is from the mating of the high-performance, feed-efficiency Pathfinder Sire, ONEills Expedition, with ONEills Royal Lady 28, the \$40,000 top-selling female of the 2003 O'Neill Sale and remains in production with perfect soundness at 16 years of age.
- The grandam is a past National Junior Angus Show Reserve Grand Champion Cow.
- A full brother, ONEills Expo, sold one-half interest for \$12,500 to Goode Brothers of Missouri who selected another full brother, ONEills Epic, and others include the \$12,000 ONEills Expedition 563 and the record performing Maifeld Expedition 0245.
- Bred April 8, 2016 to ONEILLS GERONIMO and exposed to him.

ONEILLS FRONTIERSMAN 96

Birth Date: 1-27-2016 Bull 18564927 Tattoo: 96 Tag: 1674 BULL CALF

#SAV Pioneer 7301 #SAV Final Answer 0035 [RDF]
 SAV Blackbird 5297
 #ONEills Expedition
 +ONEills Royal Lady 29

#ONEills Expedition Circle A Adventure 0124
 ONEills Delia 715
 #DHD Traveler 6807
 +ONEills Royal Lady 10

CW	+38
MARB	+0.34
RE	+0.95
FAT	-0.40
\$W	+33.74
\$B	+125.74

CED +2 .05 **BEPD** +4.0 .05 **WEPD** +52 .05 **YEPD** +97 .05 **RADG** +30 .05 **SC** +14 .05 **MILK** +19 .05

- Bred much like ONEills Black Bardolier, this promising prospect by ONEills Frontiersman is double-bred to the Pathfinder Sire, ONEills Expedition, with a pedigree that is also linebred through the full sisters, ONEills Royal Lady 28 and ONEills Royal Lady 29.
- This bull was produced as a natural calf from a featured donor who is a maternal sister to ONEills Royal Lady 40.
- Birth weight 72 pounds.

ONEILLS 72E DELTA 145

Birth Date: 2-3-2015 Bull 18254057 Tattoo: 145 Tag: 1674 BULL

#Happyvale Blackcap G 72E Happyvale Grand Blackcap 30X
 Happyvale Bar Neonla 7T
 ONEills Prime Force
 +ONEills Delia 725

#ONEills Expedition Circle A Adventure 0124
 ONEills Delia 715
 #DHD Traveler 6807
 +ONEills Royal Lady 10

CW	+16
MARB	+0.21
RE	+0.35
FAT	-0.56
\$W	-2.27
\$B	+78.99

CED -6 .22 **BEPD** +5.4 .32 **WEPD** +30 .22 **YEPD** +56 .21 **RADG** +22 .05 **SC** -18 .30 **MILK** +11 .12

- A blending of the Royal Lady and Delia families, by the senior herd sire, ONEills 72E Delta, stemming from the Pathfinder Sire, Happyvale Blackcap G 72E who is often referred to as the roughage converter.
- This bull was produced as a natural calf from a featured donor dam who is a maternal sister to the \$30,000 valued ONEills Royal Lady 40, stemming from the \$40,000 ONEills Royal Lady 28.
- Birth weight 89 pounds.

ONEILLS ROYAL LADY 143

Birth Date: 3-21-2015 Cow +18449016 Tattoo: 545 Tag: 1674 BRED HEIFER

CED	BEPD	WEPD	YEPD	RADG	SC	MILK
1+1 .05	1+3.0 .05	1+40 .05	1+80 .05	1+25 .05	1+12 .05	1+16 .05
CW	MARB	RE	FAT	\$W	\$B	
1+24	1+52	1+56	1-.031	+15.71	+99.64	

- Bred April 19, 2016 to ONEILLS MARSHALL LAD.

ONEILLS ROYAL LADY EMBRYOS

Two Frozen Embryos

#Isu Imaging Q 9111 #GT Expo
 Summittcrest Pride 351F
 +Circle Oak Traveler 524
 #+ONEills Delia 703

#ONEills Expedition Circle A Adventure 0124
 ONEills Delia 715
 #DHD Traveler 6807
 +ONEills Royal Lady 10

CED	BEPD	WEPD	YEPD	RADG	SC	MILK
+4 .64	+2.0 .83	+42 .76	+85 .63	+21 .44	+30 .62	+16 .55
-2 .28	+3.9 .34	+38 .28	+74 .27	+29 .22	-.07 .30	+15 .29
CW	MARB	RE	FAT	\$W	\$B	
+20	+0.74	+0.34	+0.020	+18.90	+84.58	
+29	+0.30	+0.78	-0.082	+12.56	+113.18	

- The result of a Royal Lady mating, linebred through the maternal brothers, ONEills Lucky Boy and ONEills Expedition.
- Both the sire and maternal grandsire reigned as Grand Champion Bulls at the Nebraska State Fair.
- The grandam is the \$40,000 ONEills Royal Lady 28.

ONEILLS ROYAL LADY FAMILY



ONEILLS FRONTIERSMAN - Reference Sire B



ONEILLS BLACK BARDOLIER - Son of Reference Sire B.

B Oneills Frontiersman

Birth Date: 1-23-2012 Bull: 17281878 Tattoo: 142

#SAV Final Answer 0035 [PDF]

#Sitz Traveler 8180

SAV Pioneer 7301

SAV Emulous 8145

#15688392 SAV Blackbird 5297

#+Boyd New Day 8005

SAV Blackbird 1082

#Oneills Expedition

Circle A Adventure 0124

Oneills Royal Lady Elaine

Oneills Delia 715

+16140100 +Oneills Royal Lady 29

#DHD Traveler 6807

+Oneills Royal Lady 10

CW
+48
MARB
+ .37
RE
+1.11
FAT
+ .003
\$W
+52.70
\$B

CED	BEPD	WEPD	YEPD	RADG	SC	MILK	\$B							
-1	.51	+4.0	.66	+66	.54	+120	.47	+30	.41	+34	.48	+22	.25	+137.89

- FOR REFERENCE ONLY.
- This magnificent herd sire is the top 365-day weight bull ever produced in the 65-year Angus career of master breeder Jim O'Neill.
- Oneills Frontiersman recorded a birth weight of 77 pounds for a birth ratio of 94 along with a 205-day weight of 963 pounds for a weaning ratio of 112 and a 365-day weight of 1,744 pounds for a yearling ratio of 118, and he went on to sell one-half interest for \$50,000 for a \$100,000 valuation to Frontier Associates after being on display in the yards at

the National Western Stock Show where he was admired for his length of body, muscling and quality.

- To date, Oneills Frontiersman has 51 progeny with an average weaning ratio of 104 along with 26 yearling progeny with an average yearling ratio of 102, combined with a progeny ribeye ratio of 103 on 34 head.
- His progeny are highlighted by Oneills Geronimo and Oneills Black Bardolier who were the top weaning bulls of their respective calf crops.
- His now-deceased dam records a progeny birth ratio of 94 balanced with a progeny weaning ratio of 107 on four calves and a progeny ribeye ratio of 104 on five head.
- A full brother to the dam of this bull sired the pen of eight steers that were the high-gaining and high feed-efficiency combination pen of steers in the 2011 Tri-County Steer Futurity, competing against over 9,000 steers, many by popular major AI sires.



ONEILLS ROYAL LADY ELAINE - The dam of Reference Sire B and Lots 5A and 5B.



ONEILLS ROYAL LADY 29
- The maternal grandam of Reference Sire B and Lots 5A and 5B.

ONEILLS ROYAL LADY 10 -
The maternal great-grandam of Reference Sire B and Lots 5A and 5B.



ONEILLS ROYAL LADY FAMILY

- The first of two phenomenal flush brothers produced in the embryo program from ONeills Royal Lady Elaine, by the carcass sire, Rito 9Q13 of Rita 5F56 GHM.
- The now-deceased dam of this bull balances a progeny birth ratio of 94 with a progeny weaning ratio of 107 on four natural calves and a progeny yearling ratio of 118 on one head along with a progeny ribeye ratio of 104 on five head, and she is best known as the dam of the \$100,000 valued ONeills Frontiersman.
- This bull ranks in the top one percent for RADG EPD and Ribeye EPD, while ranking in the top two percent for \$B.
- The grandam is a great producer and a sister to the \$45,000 ONeills Royal Lady 28.



ONEILLS GALAXY - Lot 5A



ONEILLS PACESETTER - Maternal brother to Lots 5A and 5B.

5A Oneills Galaxy ^[OSF]

Birth Date: 4-3-2015	Bull +18254077	Tattoo: 415	Tag: 1662C BULL	CW			
#Gardens Highmark				+47			
#Summitcrest Scotch Cap 0B45				MARB			
Rito 9Q13 of Rita 5F56 GHM +16408438 +Rita 5F56 of 1198 FD				+ .56			
Green Garden Pride 6128 S1				RE			
#CA Future Direction 5321 +Rita 1198 of 2536 Rito 616				+1.33			
FAT							
#ONEills Expedition				-.093			
Circle A Adventure 0124				\$W			
ONEills Royal Lady Elaine				+22.74			
+16140100 +ONEills Royal Lady 29				\$B			
#DHD Traveler 6807 +ONEills Royal Lady 10							
CED	BEPD	WEPD	YEPD	RADG	SC	MILK	\$B
-6	.33	+4.9	.37	+57	.30	+105	.33
				+34	.32	+51	.41
				+15	.22	+160	.27

- 205-Day Wt. 962 pounds.

5B Oneills Escalade ^[OSF]

Birth Date: 4-2-2015	Bull +18254074	Tattoo: 395	Tag: 1662B BULL	CW			
#Gardens Highmark				+43			
#Summitcrest Scotch Cap 0B45				MARB			
Rito 9Q13 of Rita 5F56 GHM +16408438 +Rita 5F56 of 1198 FD				+ .51			
Green Garden Pride 6128 S1				RE			
#CA Future Direction 5321 +Rita 1198 of 2536 Rito 616				+1.25			
FAT							
#ONEills Expedition				-.074			
Circle A Adventure 0124				\$W			
ONEills Royal Lady Elaine				+26.56			
+16140100 +ONEills Royal Lady 29							
#DHD Traveler 6807 +ONEills Royal Lady 10							
CED	BEPD	WEPD	YEPD	RADG	SC	MILK	\$B
-2	.33	+4.4	.37	+50	.30	+98	.33
				+35	.32	+04	.41
				+18	.22	+153	.07

- 205-Day Wt. 875 pounds.

- This elite performance and carcass prospect ranks in the top one percent for RADG EPD and for Ribeye EPD, while ranking in the top four percent for \$B, from an embryo flush produced from the now-deceased ONeills Royal Lady Elaine, who is best known as the dam of the \$100,000 valued ONeills Frontiersman.
- A maternal brother, ONeills Pacesetter, was the 2014 National Western Angus Sale Bull Calf Champion who sold one-half interest for \$7,500 to Joel Buseman, while another maternal brother, ONeills Pioneer 583, sold one-half interest for \$10,000 to Doug and Lisa Schmidt, and another, ONeills Impressive, sold one-half interest for \$9,000 at the Black Hills Stock Show to Maifeld Inc., and still another, ONeills Right Answer 135, was a headliner of the 2016 O'Neill Bid-Off.



ONEILLS PIONEER 583 - Maternal brother to Lots 5A and 5B.



ONEILLS ESCALADE - Lot 5B

ONEILLS ROYAL LADY FAMILY



ONEILLS ROYAL LADY 76 - Lot 6



ONEILLS ROYAL LADY ELAINE - Full sister to Lot 6.

6 Oneills Royal Lady 76

Birth Date: 2-6-2010	Cow +16701462	Tattoo: 640	Tag: 1676 COW	CW			
Circle A Adventure 0124	#SAF Focus of ER			+23			
Oneills Expedition	+Acf Evergreen 8007			MARB			
#14761330 Oneills Delia 715	+Circle Oak Traveler 524			+ .34			
	#+Oneills Delia 703			RE			
				+ .40			
	#DHD Traveler 6807			FAT			
Oneills Royal Lady 29	#QAS Traveler 23-4			- .095			
+14096272 +Oneills Royal Lady 10	#Bemindful Maid DHD 0807			\$W			
	#+Oneills Renovator			+4.95			
	Royale Bardolier Forever 783			\$B			
				+4.95			
CED	BEPD	WEPD	YEPD	RADG	SC	MILK	\$B
-4 .26	+5.1 .33	+39 .28	+75 .25	+27 .19	-.32 .28	+13 .28	+96.49

- Full sister to the dam of the \$100,000 valued Oneills Frontiersman.
- A full sister-in-blood to the successful sires, Oneills Expo, Oneills Epic, Oneills Expedition 563 and Maifeld Expedition 0245.
- This cow is from the successful embryo mating by the Pathfinder Sire, Oneills Expedition, from Oneills Royal Lady 29, who records a progeny weaning ratio of 105 on her four natural calves with 25 progeny evaluated by ultrasound.
- Bred May 16, 2016 to ONEILLS 9Q13 OF 720 and exposed to him.

6A Oneills Jock 385

Birth Date: 3-31-2015	Bull 18254072	Tattoo: 385	Tag: 1676 BULL	CW			
+Oneills Renovation	#+Oneills Renovator			+25			
Oneills Jock	+Oneills Royal Lady 40			MARB			
16964416 Oneills Royal Lady 56	#Oneills Expedition			+ .15			
	+Oneills Royal Lady 39			RE			
				+ .49			
	#Oneills Expedition			FAT			
Oneills Royal Lady 76	Circle A Adventure 0124			- .070			
+16701462 +Oneills Royal Lady 29	Oneills Delia 715			\$W			
	#DHD Traveler 6807			+13.47			
	+Oneills Royal Lady 10						
CED	BEPD	WEPD	YEPD	RADG	SC	MILK	\$B
+6 .24	+1.5 .33	+31 .24	+63 .18	+ .23 .05	+ .39 .05	+14 .11	+89.76

- Triple-bred to the Royal Lady family, this strong-age bull by Oneills Jock features a linebred pedigree that also traces twice to the Pathfinder Sire, Oneills Expedition.
- The dam is a full sister-in-blood to the noted sires, Oneills Expo, Oneills Epic, Oneills Expedition 563 and Maifeld Expedition 0245, stemming from a grandam who is a flush sister to Oneills Royal Lady 28.
- Birth weight 74 pounds.



ONEILLS ROYAL LADY 29 - The dam of Lot 6.



ONEILLS ROYAL LADY 38 - The dam of Lot 7.

ONEILLS ROYAL LADY FAMILY



ONEILLS ROYAL LADY 104 - Lot 8



ONEILLS ROYAL LADY 55 - The dam of Lot 8.

7 ONEILLS Royal Lady 53

Birth Date: 3-25-2008	Cow 16217208	Tattoo: 228	Tag: 08-00 COW	CW			
Circle A Adventure 0124	#SAF Focus of ER			+28			
ONEILLS Expedition	+Acf Evergreen 8007			MARB			
#14761330 ONEILLS Delia 715	+Circle Oak Traveler 524			+ .07			
	#+ONEILLS Delia 703			RE			
	#Leachman Boom Time			+ .35			
ONEILLS Royal Lady 38	Leachman Burgess 5004			FAT			
14999839 +ONEILLS Royal Lady 10	#+ONEILLS Renovator			- .065			
	Royale Bardolier Forever 783			\$W			
				+19.55			
CED	BEPD	WEPD	YEPD	RADG	SC	MILK	\$B
+2 .28	+1.7 .39	+43 .30	+81 .28	+28 .05	+21 .05	+10 .26	+95.76

- A full sister to ONEILLS Royal Lady 52 who recorded individual IMF and ribeye ratios of 120 and 107, respectively, and sold one-half interest for \$16,500 for a \$33,000 valuation to Southern Cattle Co. of Florida, as the top-selling heifer of the 2008 O'Neill Sale where their full brother, ONEILLS Royal Edge K337, was the \$11,000 top-selling full interest bull to Raff Beef of Australia and their outstanding dam sold one-half interest for \$11,500 for a \$23,000 valuation to Maifeld Inc. of Iowa.
- The grandam is a high income producing National Junior Angus Show Reserve Grand Champion Cow.
- Exposed to ONEILLS 9Q13 OF 720.

7A ONEILLS Royal Lady 147

Birth Date: 5-20-2016	Cow 18585657	Tattoo: 676	Tag: 08-00 HEIFER	CW			
#SAV Pioneer 7301	#SAV Final Answer 0035 [RDF]			+27			
ONEILLS Absolute	SAV Blackbird 5297			MARB			
+17876887 ONEILLS Eraline 234	#ONEILLS Expedition			+ .24			
	+ONEILLS Eraline 231			RE			
	Circle A Adventure 0124			+ .38			
	ONEILLS Delia 715			FAT			
ONEILLS Royal Lady 53	#Leachman Boom Time			- .012			
16217208 ONEILLS Royal Lady 38	+ONEILLS Royal Lady 10			\$W			
				+31.25			
CED	BEPD	WEPD	YEPD	RADG	SC	MILK	\$B
+3 .05	+2.2 .05	+47 .05	+86 .05	N/A	N/A	+18 .05	+88.31

- An elite blending of the Royal Lady, Eraline and Delia families sired by ONEILLS Absolute, from a dam by the Pathfinder Sire, ONEILLS Expedition.
- The dam is a full sister to the \$33,000 valued ONEILLS Royal Lady 52, and to the \$11,000 ONEILLS Royal Edge K337.
- Birth weight 64 pounds.

8 ONEILLS Royal Lady 104

Birth Date: 3-4-2012	Cow +17343776	Tattoo: 932	Tag: 1705 COW	CW			
#+GAR Grid Maker	#GDAR Traveler 044			+35			
SAV Bismarck 5682 [RDF]	GAR Precision 2536			MARB			
#+15109865 SAV Abigale 0451	#Schoenes Fix It 826			+ .31			
	SAV Abigale 6062			RE			
	Circle A Adventure 0124			+ .87			
	ONEILLS Delia 715			FAT			
ONEILLS Expedition	#SAV 8180 Traveler 004 [RDF]			- .050			
ONEILLS Royal Lady 55	+ONEILLS Royal Lady 10			\$W			
16080506 +ONEILLS Royal Lady 45				+40.28			
CED	BEPD	WEPD	YEPD	RADG	SC	MILK	\$B
+6 .29	+2.2 .31	+49 .26	+83 .24	+27 .25	+73 .24	+19 .26	+123.09

- This productive cow from the Royal Lady family balances a progeny birth ratio of 99 with a progeny weaning ratio of 101 on two calves and she is from an embryo mating by the Pathfinder Sire, SAV Bismarck 5682.
- The outstanding donor dam pictured here as a two-year-old was a second-prize winner in the cow/calf competition next to the Grand Champion Cow at the 2010 National Junior Angus Show.
- The third dam is a National Junior Angus Show Reserve Grand Champion Cow.
- Sells with a bull calf at side (Lot 8A) calved September 13, 2016 by ONEILLS JOCK. Tattoo 756. Tag 1705 Bull Calf. Birth weight 68 pounds.



ONEILLS ROYAL LADY 52 - Flush sister to Lot 7.

ONEILLS ROYAL LADY FAMILY



ONEILLS JOCK - Reference Sire C



ONEILLS ROYAL LADY 56 - The dam of Reference Sire C and Lots 9 and 9A.

Oneills Jock [DDF]

Birth Date: 1-2-2011	Bull 16964416	Tattoo: 11	CW
#+Oneills Renovator			+28
#Premier Independence KN			MARB
#Oneills Eraline 42			-.05
#+SAF 598 Bando 5175			RE
+Oneills Royal Lady 28			+.57
FAT			-.045
#Oneills Expedition			\$W
Circle A Adventure 0124			+31.13
Oneills Delia 715			\$B
#Hyline Right Time 338			
+Oneills Royal Lady 11			
CED	BEPD	WEPD	YEPD
+14 .53	-2.6 .67	+35 .54	+63 .48
RADG	SC	MILK	\$B
+19 .32	+1.10 .43	+16 .18	+84.14

- FOR REFERENCE ONLY.
- The O'Neill proven senior herd sire who features a strong concentration of O'Neill breeding with the time-tested Royal Lady family represented on both sides of his pedigree.
- Oneills Jock recorded a birth weight of 71 pounds for an individual birth ratio of 88 and a 205-day weight of 913 pounds for an individual weaning ratio of 108 and went on to earn a 365-day weight of 1,429 pounds.



ONEILLS ROYAL LADY 146 - Lot 9

- This proven calving-ease sire balances a progeny birth ratio of 97 with a progeny weaning ratio of 100 on 53 calves and a progeny yearling ratio of 100 on 33 head with 22 head evaluated by ultrasound.
- His sire, Oneills Renovation, is a featured sire at Windmill Ranch in Nebraska.
- His dam, Oneills Royal Lady 56, balances a progeny birth ratio of 91 with a progeny weaning ratio of 102 on four calves and she is backed by the Pathfinder Sires, Oneills Expedition and Hyline Right Time 338.

9 Oneills Royal Lady 146

Birth Date: 2-6-2016	Cow 18564929	Tattoo: 126	Tag: 1663 HEIFER
CED	BEPD	WEPD	YEPD
h-4 .05	h+2.1 .05	h+50 .05	h+94 .05
RADG	SC	MILK	\$B
h-.28 .05	h+.56 .05	h+20 .05	h+20 .05
CW	MARB	RE	FAT
h+38	h+.37	h+.78	h-.039
\$W	\$B		
+41.73	+121.28		

9A Oneills Frontiersman 834

Birth Date: 9-18-2014	Bull +18209958	Tattoo: 834	Tag: 1663C
#SAV Pioneer 7301	#SAV Final Answer 0035 [RDF]	CW	+31
Oneills Frontiersman	SAV Blackbird 5297	MARB	+.42
17281878	+Oneills Royal Lady Elaine	RE	+.78
#Oneills Expedition	Circle A Adventure 0124	FAT	-.049
Oneills Royal Lady 56	Oneills Delia 715	\$W	+41.73
16217524	+Oneills Royal Lady 39	\$B	+112.34
#Hyline Right Time 338	+Oneills Royal Lady 11		
CED	BEPD	WEPD	YEPD
h-4 .05	h+2.1 .05	h+50 .05	h+94 .05
RADG	SC	MILK	\$B
h-.28 .05	h+.56 .05	h+20 .05	h+112.34

- 205-Day wt. 690 pounds, IMF-4.97, RE-14.3
- Maternal siblings to the O'Neill proven senior herd sire, Oneills Jock, from Oneills Royal Lady 56 who balances a progeny birth ratio of 91 with a progeny weaning ratio of 102 on four calves.
- A maternal brother, Oneills Black Baron, sold one-half interest for \$6,000 at the Black Hills Stock Show to Waveny Angus of Alberta Canada, and a maternal sister sold for \$5,500 to Craig Schaefer of Iowa in the 2010 O'Neill Bid-Off.
- Two maternal sisters post a collective progeny weaning ratio of 106 on their first calves.

ONEILLS DELIA FAMILY



ONEILLS GERONIMO - Reference Sire D



ONEILLS DELIA 731 - The dam of Reference Sire D.

D Oneills Geronimo

Birth Date: 1-12-2014	Bull 17926576	Tattoo: 64	CW											
#SAV Pioneer 7301	#SAV Final Answer 0035 [RDF]		+39											
Oneills Frontiersman	SAV Blackbird 5297		MARB											
17281878 +Oneills Royal Lady Elaine	#Oneills Expedition		+ .49											
	+Oneills Royal Lady 29		RE											
	#Rito 112 of 2536 Rito 616		+ .70											
Oneills Delia 731	#Rito 616 of 4B20 6807		FAT											
+16405987 #+Oneills Delia 703	GAR Precision 2536		- .015											
	#TC Stockman 365		\$W											
	+Oneills Delia 620		+57.05											
CED	BEPD	WEPD	YEPD	RADG	SC	MILK	\$B							
+4	.35	+2.1	.41	+57	.30	+96	.30	+24	.34	+96	.38	+24	.17	+129.76

- FOR REFERENCE ONLY.
- The heaviest weaning bull of the 2014 O'Neill calf crop.
- Oneills Geronimo records a birth weight of 80 pounds for an individual birth ratio of 96 and a 205-day weight of 977 pounds for an individual weaning ratio of 110 and went on to record a 365-day weight of 1,577 pounds along with an IMF score of 5.92 for an individual IMF ratio of 105 and a 365-day weight ribeye of 16.6 for an individual ribeye ratio of 106.

- This bull is a member of the powerful first calf crop by the \$100,000 valued Oneills Frontiersman.
- The dam of Oneills Geronimo has been one of the most powerful donors in the O'Neill program with a progeny weaning ratio of 111 on three natural calves and a daughter in production who records a progeny weaning ratio of 105 on two calves and she is featured in this sale as Lot 10.
- The grandam is a Pathfinder Dam who was Reserve Grand Champion of both the Iowa State Fair and the Nebraska State Fair in 2000 and a first-prize winner of the National Junior Angus Show.



ONEILLS DELIA 703 - The Pathfinder grandam of Reference Sire D.



ONEILLS DELIA 620 - The maternal great-grandam of Reference Sire D.



ONEILLS EXALT - Maternal brother to Reference Sire D.

ONEILLS DELIA FAMILY



ONEILLS DELIA 731 - Lot 10



ONEILLS GERONIMO - His dam sells as Lot 10.

10

Oneills Delia 731

Birth Date: 1-31-2009	Cow +16405987	Tattoo: 479	Tag: 1668 COW	CW			
#Rito 616 of 4B20 6807	#DHD Traveler 6807			+32			
Rito 112 of 2536 Rito 616	+Rita 4B20 of OFB1 Bando			MARB			
#+13793826 GAR Precision 2536	#GAR Precision 1680			+ .55			
	+GAR Ext 2104			RE			
	#TC Stockman 365			+ .09			
Oneills Delia 703	#TC Stockman			FAT			
#+13194593 +Oneills Delia 620	TC Pride 0014			- .063			
	#+Oneills Renovator			\$W			
	#Oneills Delia 413			+48.80			
CED	BEPD	WEPD	YEPD	RADG	SC	MILK	\$B
+1 .39	+1.4 .46	+47 .36	+78 .32	+23 .41	+65 .40	+27 .34	+122.67

- This powerful donor with a progeny weaning ratio of 111 on three natural calves is best known as the dam of Oneills Geronimo, the heaviest weaning bull of the 2014 O'Neill calf crop and featured O'Neill herd sire.
- Another son, Oneills Exalt, sold one-half interest for \$10,000 to Johnson Brothers of North Dakota.
- Bred June 15, 2016 to ONEILLS FRONTIERSMAN. Exposed to ONEILLS JOCK after August 17, 2016.



ONEILLS FRONTIERSMAN 575 - Lot 10C

10A Oneills Payweight 686

Birth Date: 5-1-2016	Bull Reg.No. Pdg.	Tattoo: 686	Tag: 1668 BULL			
#Vermilion Payweight J847	#Vermilion Dateline 7078					
Basin Payweight 006S	Vermilion Lass 7969					
#+15332050 +Basin Lucy 3829	#CA Future Direction 5321					
	Basin Lucy 178E					
	#Rito 112 of 2536 Rito 616					
Oneills Delia 731	#Rito 616 of 4B20 6807					
#+16405987 #+Oneills Delia 703	GAR Precision 2536					
	#TC Stockman 365					
	+Oneills Delia 620					
CED	BEPD	WEPD	YEPD	RADG	SC	MILK
S -6 .69	+1.8 .85	+71 .80	+122 .75	+27 .53	+2.36 .79	+27 .68
D +1 .39	+1.4 .46	+47 .36	+78 .32	+23 .41	+65 .40	+27 .34
CW	MARB	RE	FAT	\$W	\$B	
S +90	+ .56	+ .95	+ .010	+69.75	+189.01	
D +32	+ .55	+ .09	- .063	+48.80	+122.67	

- A maternal brother to Oneills Geronimo and Oneills Exalt, produced as a natural calf from a powerful donor dam who records a progeny weaning ratio of 111 on three natural calves, stemming from the Pathfinder Dam and popular champion, Oneills Delia 703.
- A maternal sister has a progeny weaning ratio of 105 on her first two calves.
- Birth weight 86 pounds.

10B Oneills Delia 781

Birth Date: 9-13-2015 Cow +18566317 Tattoo: 595 Tag: 1668C HEIFER
 • Birth weight 75 pounds.

10C Oneills Frontiersman 575

Birth Date: 9-10-2015	Bull +18566313	Tattoo: 575	Tag: 1668B BULL				
#SAV Pioneer 7301	#SAV Final Answer 0035 [RF]						
Oneills Frontiersman	SAV Blackbird 5297						
17281878 +Oneills Royal Lady Elaine	#Oneills Expedition						
	+Oneills Royal Lady 29						
	#Rito 112 of 2536 Rito 616						
Oneills Delia 731	#Rito 616 of 4B20 6807						
#+16405987 #+Oneills Delia 703	GAR Precision 2536						
	#TC Stockman 365						
	+Oneills Delia 620						
CED	BEPD	WEPD	YEPD	RADG	SC	MILK	\$B
I+0 .05	I+2.7 .05	I+57 .05	I+99 .05	I+27 .05	I+50 .05	I+25 .05	I+130.73

- Birth weight 80 pounds.
- Maternal siblings to Oneills Geronimo and Oneills Exalt, sired by the \$100,000 valued Oneills Frontiersman.
- These flushmates combine the best of the Delia and Royal Lady families.

ONEILLS DELIA FAMILY



ONEILLS DELIA 730 - Lot 11



ONEILLS DELIA 715 - The dam of Lot 11.

ONEILLS Delia 730

Birth Date: 2-23-2008	Cow +16241046	Tattoo: 458	Tag: 1660 COW	CW			
#N Bar Emulation EXT	#Emulation N Bar 5522			+42			
Leachman Right Time	N Bar Primrose 2424			MARB			
#+11750711 Leachman Erica 0025	#Tehama Bando 155			+.27			
	Leachman Erica 8058			RE			
	#Traveler 124 GDAR			+.09			
+Circle Oak Traveler 524	VDAR Beauty 228			FAT			
ONEills Delia 715	#TC Stockman 365			+.015			
14134966 #+ONEills Delia 703	+ONEills Delia 620			\$W			
				+22.07			
CED	BEPD	WEPD	YEPD	RADG	SC	MILK	\$B
-5 .40	+4.5 .48	+47 .40	+83 .33	+19 .35	+26 .35	+18 .37	+110.12

- This powerful and proven donor has a progeny weaning ratio of 103 on five natural calves and she is from the mating of the \$160,000 Pathfinder Sire, Leachman Right Time, with the legendary herd sire producer, ONEills Delia 715.
- A son, ONEills Astound, was the 2012 Black Hills Stock Show Reserve Grand Champion Bull and \$15,000 second top-selling bull to Ballou Angus Ranch of Wyoming who also selected another son, ONEills Dominant, for \$13,000 in the 2015 Black Hills Stock Show Sale.

- Another son was the \$10,500 top-selling bull of a past Maifeld/O'Neill Sale to Nathan Neujuar of Nebraska, and others include a \$7,500 son to Chad Comes of Iowa and a \$7,000 son to John Fagan of Iowa with another selling to Nicholas Stein of Iowa.
- A daughter was a second top-selling female of the 2015 O'Neill Bid-Off.
- Bred May 24, 2016 to ONEILLS BLACK BARDOLIER.



ONEILLS ASTOUND - His dam sells as Lot 11.



ONEILLS DOMINANT - His dam sells as Lot 11.


ONEILLS DELIA FAMILY



ONEILLS EXPEDITION - Reference Sire E



ONEILLS DELIA 715 - The dam of Reference Sire E.

	Oneills Expedition [AMF-CAF-DDF-NHF]		CW				
	Birth Date: 1-28-2004	Bull #14761330	Tattoo: 14	+48			
	#SAF Focus of ER	#SAF Fame	MARB				
Circle A Adventure 0124		GDAR Forever Lady 246	+ .55				
13556245	+Acf Evergreen 8007	#TC Stockman 365	RE				
		#GT Pine Siskin	+ .73				
	+Circle Oak Traveler 524	#Traveler 124 GDAR	FAT				
Oneills Delia 715		VDAR Beauty 228	- .119				
14134966	#+Oneills Delia 703	#TC Stockman 365	\$W				
		+Oneills Delia 620	+22.59				
CED	BEPD	WEPD	YEPD	RADG	SC	MILK	\$B
-6 .69	+4.6 .87	+51 .82	+98 .72	+34 .43	+18 .74	+18 .72	+151.08

- FOR REFERENCE ONLY.
- PATHFINDER SIRE.
- The proven high-performance and high feed-efficiency Pathfinder Sire recognized as one of the greatest breeding achievements in the 65 Angus year career of master breeder Jim O'Neill.
- Oneills Expedition is a progeny proven sire who ranks in the upper percentiles for performance, efficiency and carcass traits with high growth sons along with beautiful daughters that have beautiful udders and perfect feet with excellent fleshing ability that are a frame score smaller than his sons.

- This powerful and popular Grand Champion Bull both of the 2006 Kansas State Fair and the 2006 Nebraska State Fair combines phenomenal individual performance and muscling with exceptional structural correctness, fleshing ability and fertility that O'Neill Angus are known for along with a very docile disposition that he transmits to his valuable progeny who combine calving ease with tremendous growth.
- Oneills Expedition sold one-half interest for \$50,000 for a \$100,000 valuation as the featured Lot 1 top-selling bull of the 2007 O'Neill Sale to Expedition Associates.
- A son sold one-half interest for \$75,000 as the top-selling Lot 1 bull of the 2008 O'Neill Sale and others have dominated sales at the Black Hills Stock Show, Iowa Beef Expo and multiple test stations while another son was the 2007 National Junior Angus show Grand Champion Carcass Steer.
- Birth weight 82 pounds, 205-day weight 970 pounds, 365-day weight 1,599 pounds, IMF 4.82, RE 19.2.



ONEILLS ADVENTURE K325 - Full brother to Reference Sire E.



ONEILLS POWER FORCE - Maternal brother to Reference Sire E.

ONEILLS LUCKY BOY - Maternal brother to Reference Sire E.



ONEILLS DELIA FAMILY



ONEILLS DELIA 785 - Lot 12



ONEILLS DELIA 715 - The dam of Lots 12, 12A and 12B.

12 Oneills Delia 785

Birth Date: 2-20-2016 Cow #18566113 Tattoo: 166 Tag: 1620A HEIFER

Oneills Jock 16964416
 +Oneills Renovation
 #Oneills Renovator
 +Oneills Royal Lady 40
 #Oneills Expedition
 +Oneills Royal Lady 39

+Circle Oak Traveler 524
 Oneills Delia 715
 14134966 #+Oneills Delia 703

#Traveler 124 GDAR
 VDAR Beauty 228
 #TC Stockman 365
 +Oneills Delia 620

	CW
	I+.34
	MARB
	I+.23
	RE
	I+.58
	FAT
	I-.045
	\$W
	+25.54
	\$B
	+108.81

- A special feature from the embryo program by Oneills Jock, from the legendary herd sire producer, Oneills Delia 715 who records progeny weaning and yearling ratios of 106 and 103, respectively, on two natural calves combined with progeny IMF and ribeye ratios of 108 and 103, respectively, on 30 head.
- A maternal brother, Oneills Expedition, is the proven high-performance and high feed-efficiency Pathfinder Sire who sold one-half interest for \$50,000 for a \$100,000 valuation as the featured Lot 1 top-selling bull of the 2007 O'Neill Sale.

12A Oneills Delia Embryo

One IVF Frozen Embryo

#SAF Focus of ER
 Circle A Adventure 0124
 13556245 +Acf Evergreen 8007

+Circle Oak Traveler 524
 Oneills Delia 715
 14134966 #+Oneills Delia 703

#SAF Fame
 GDAR Forever Lady 246
 #TC Stockman 365
 #GT Pine Siskin

#Traveler 124 GDAR
 VDAR Beauty 228
 #TC Stockman 365
 +Oneills Delia 620

	CED	BEPD	WEPD	YEPD	RADG	SC	MILK
S	+4 .66	+2.5 .85	+38 .79	+70 .69	+26 .37	+61 .62	+22 .62
D	-15 .52	+6.7 .62	+51 .55	+96 .48	+29 .37	+71 .54	+15 .49
	CW	MARB	RE	FAT	\$W	\$B	
S	+23	+.64	+.40	-.082	+28.35	+111.09	
D	+40	+.50	+.59	-.045	+10.18	+129.87	

- This embryo is a full sibling to Oneills Expedition, the proven high-performance and high feed-efficiency Pathfinder Sire who sold one-half interest for \$50,000 for a \$100,000 valuation as a featured Lot 1 top-selling bull of the 2007 O'Neill Sale.
- Another full brother, Oneills Adventure K325, is featured in the Maifeld and Kline programs.
- A full sister, Oneills Delia 720, produced the \$2,700 record-selling embryos in the 2015 National Western Foundation Female Sale.
- Maternal sibling embryos sold for \$1,500 each in the 2010 National Western Foundation Female Sale.

- Another maternal brother, Oneills Adventure K325, has served as a successful herd sire for Maifeld Inc. and Kline Angus Farm.
- A maternal brother, Oneills Lucky Boy, was Grand Champion Angus Bull and Reserve Supreme Champion over all breeds in the 2008 Nebraska State Fair and Reserve Grand Champion Angus Bull of the 2008 Minnesota State Fair, as well as being Grand Champion Angus Bull of the 2008 Iowa Angus Breeders Show and a very successful sire in the Maifeld program.
- Other maternal brothers include the O'Neill herd sire, Oneills Power Force, along with an impressive array of other top-sellers.
- Maternal sisters include the noted donors, Oneills Delia 720, Oneills Delia 725, Oneills Delia 730, Oneills Delia 728, Oneills Delia 740 and Oneills Delia 755.
- A full brother, Oneills Rocket, sold one-half interest for \$11,000 to Mark Goode in Kansas in the 2016 O'Neill Bid-Off.

12B Oneills Delia Embryo

One IVF Frozen Embryo

Oneills Frontiersman
 Oneills Black Bardolier
 18192530 +Oneills Royal Lady 90

+Circle Oak Traveler 524
 Oneills Delia 715
 14134966 #+Oneills Delia 703

#SAV Pioneer 7301
 +Oneills Royal Lady Elaine
 #Oneills Expedition
 +Oneills Royal Lady 40

#Traveler 124 GDAR
 VDAR Beauty 228
 #TC Stockman 365
 +Oneills Delia 620

	CED	BEPD	WEPD	YEPD	RADG	SC	MILK
S	+4 .34	+2.1 .41	+72 .30	+130 .33	+.34 .31	+.77 .45	+26 .15
D	-15 .52	+6.7 .62	+51 .55	+96 .48	+29 .37	+71 .54	+15 .49
	CW	MARB	RE	FAT	\$W	\$B	
S	+61	+.29	+1.03	-.021	+67.57	+157.72	
D	+40	+.50	+.59	-.045	+10.18	+129.87	

- A cutting-edge embryo mating from the herd sire producing Oneills Delia 715 and sired by Oneills Black Bardolier, the heaviest muscled, highest performing and most promising herd sire prospect ever bred and produced in the 65-year Angus career of master breeder Jim O'Neill.
- Maternal brothers include Oneills Expedition, Oneills Adventure K325, Oneills Lucky Boy and Oneills Power Force.

ONEILLS DELIA FAMILY



ONEILLS MARSHALL LAD - Reference Sire F



ONEILLS DELIA 720 - The dam of Reference Sire F and Lots 13 through 14B.

F Oneills Marshall Lad (DDF)

Birth Date: 1-16-2012	Bull +17362747	Tattoo: 92	CW				
#QAS Traveler 23-4	#Band 234 of Ideal 3163		+24				
Traveler 124 GDAR	QAS Blackbird Eve 601 1		MARB				
#9995349 Rachel Rito 813 GDAR	#CSU Rito 4114		+ .79				
	Rachel 966 GDAR		RE				
	#SAF Focus of ER		+ .62				
Circle A Adventure 0124	+Acf Evergreen 8007		FAT				
Oneills Delia 720	+Circle Oak Traveler 524		- .032				
+15259208 Oneills Delia 715	#+Oneills Delia 703		\$W				
			+25.04				
CED	BEPD	WEPD	YEPD	RADG	SC	MILK	\$B
+3 .42	+5 .47	+33 .35	+67 .35	+19 .38	+75 .44	+22 .24	+109.26

- FOR REFERENCE ONLY.
- The \$13,000 top-selling bull over all breeds at the 2013 Iowa Beef Expo to Maifeld Inc.
- Oneills Marshall Lad recorded a phenomenal IMF ratio of 161 combined with an individual ribeye ratio of 114, tracing twice to the legendary Pathfinder Sire, Traveler 124 GDAR and backed by the herd sire producing Delia family.

- Oneills Marshall Lad and his maternal great grandsire, Circle Oak Traveler 524, are two of the all-time great breeding sons of Traveler 124 GDAR whose semen has sold for up to \$29,000 per unit.
- The phenomenal donor dam of this bull has a progeny weaning ratio of 103 on four natural calves and a progeny yearling ratio of 105 on two head along with a progeny IMF ratio of 113 and a progeny ribeye ratio of 103 on eight head.
- Oneills Delia 770, a maternal sister, rewrote breed history with an IMF score of 9.00 combined with a 365-day weight ribeye of 16.6 and won the admiration of cattlemen while on display in the yards at the National Western Stock Show before selling to Maifeld Inc., to join her dam.
- The dam of this bull is a full sister to the high-performance and high feed-efficiency Pathfinder Sire, Oneills Expedition, and to the Maifeld and Kline sire, Oneills Adventure K325.
- A maternal brother is the O'Neill herd sire featured as Lot 14.



ONEILLS DELIA 770 - This full sister to Lots 14 and 14A is a maternal sister to Reference Sire F and Lots 13 and 14B.

13 Oneills Delia 782

Birth Date: 9-15-2015	Cow +18566323	Tattoo: 635	Tag: 1634C HEIFER	CW			
#+BT Crossover 758N	#CA Future Direction 5321			+32			
Oneills OMAI King	BT Royal Pride 237G			MARB			
16478826 +Oneills Royal Lady 40	#+SAF 598 Bando 5175			+ .70			
	+Oneills Royal Lady 28			RE			
	Circle A Adventure 0124			+ .68			
Oneills Delia 720	#SAF Focus of ER			FAT			
+15259208 Oneills Delia 715	+Acf Evergreen 8007			- .051			
	+Circle Oak Traveler 524			\$W			
	#+Oneills Delia 703			+33.81			
CED	BEPD	WEPD	YEPD	RADG	SC	MILK	\$B
+1 .05	+2.9 .05	+47 .05	+88 .05	+29 .05	+45 .05	+22 .05	+131.03

- This valuable fall yearling heifer from the embryo program combines the Delia and Royal Lady families, from a productive donor dam who records a progeny weaning ratio of 104 on three natural calves and a progeny yearling ratio of 105 on two head along with progeny IMF and ribeye ratios of 113 and 103, respectively, on eight head.
- Maternal sisters include the record-breaking carcass trait female, Oneills Delia 770, while maternal brothers include Oneills Marshall Lad and Oneills 9Q13 of 720.

ONEILLS DELIA FAMILY



ONEILLS 9Q13 OF 720 - Lot 14

ONEILLS 9Q13 OF 720 [OSF]

14

Birth Date: 2-4-2015	Bull: +18254078	Tattoo: 155	Tag: 163A										
CED	BEPD	WEPD	YEPD	RADG	SC	MILK							
-5	.34	+4.2	.37	+47	.29	+93	.33	+32	.32	+1.25	.41	+16	.22
CW	MARB	RE	FAT	\$W	\$B								
+42	+.86	+.91	-.056	+14.46	+154.37								

• FOR REFERENCE AND FOR SALE. 205-Day Wt. 862 pounds.

ONEILLS Delia Embryos

Four Frozen Embryos

#Gardens Highmark
Rito 9Q13 of Rita 5F56 GHM
+16408438 +Rita 5F56 of 1198 FD

#Summitcrest Scotch Cap 0B45
Green Garden Pride 6128 S1
#CA Future Direction 5321
+Rita 1198 of 2536 Rito 616

Circle A Adventure 0124
ONEILLS Delia 720
+15259208 ONEILLS Delia 715

#SAF Focus of ER
+Acf Evergreen 8007
+Circle Oak Traveler 524
#+ONEILLS Delia 703

CED	BEPD	WEPD	YEPD	RADG	SC	MILK							
S -2	.75	+3.6	.92	+55	.87	+108	.82	+33	.49	+1.37	.88	+16	.64
D -11	.40	+5.1	.45	+47	.36	+86	.36	+31	.35	+1.18	.45	+20	.32
CW	MARB	RE	FAT	\$W	\$B								
S +57	+.76	+1.83	-.021	+28.61	+181.83								
D +29	+.74	+.46	-.086	+22.20	+125.45								

ONEILLS Delia Embryos

Two Frozen Embryos

ONEILLS Frontiersman
ONEILLS Black Bardolier
18192530 +ONEILLS Royal Lady 90

#SAV Pioneer 7301
+ONEILLS Royal Lady Elaine
#ONEILLS Expedition
+ONEILLS Royal Lady 40

Circle A Adventure 0124
ONEILLS Delia 720
+15259208 ONEILLS Delia 715

#SAF Focus of ER
+Acf Evergreen 8007
+Circle Oak Traveler 524
#+ONEILLS Delia 703

CED	BEPD	WEPD	YEPD	RADG	SC	MILK							
S +4	.34	+2.1	.41	+72	.30	+130	.33	+34	.31	+1.77	.45	+26	.15
D -11	.40	+5.1	.45	+47	.36	+86	.36	+31	.35	+1.18	.45	+20	.32
CW	MARB	RE	FAT	\$W	\$B								
S +61	+.29	+1.03	-.021	+67.57	+157.72								
D +29	+.74	+.46	-.086	+22.20	+125.45								

- This Delia embryo mating represents an opportunity to acquire the very first genetics by ONEILLS Black Bardolier, the heaviest muscled, highest performing and most promising herd sire prospect in O'Neill history.
- The productive donor dam is a full sister to the high-performance and high feed-efficiency Pathfinder Sire, ONEILLS Expedition, stemming from ONEILLS Delia 715.
- Maternal siblings include ONEILLS Marshall Lad, ONEILLS 9Q13 of 720, ONEILLS 9Q13 and ONEILLS Delia 770.



ONEILLS DELIA 720 - The dam of Reference Sire F and Lots 13 through 14B.

- An O'Neill featured herd sire and a package of frozen embryos from a valuable embryo mating that also produced both ONEILLS 9Q13 and ONEILLS Delia 770, the record-breaking carcass trait female who recorded an IMF score of 9.00 and a 365-day ribeye of 16.6 along with superior performance.
- This mating is by the high-ranked \$B and carcass trait sire, Rito 9Q13 of Rita 5F56 GHM, from the O'Neill and Maifeld featured donor, ONEILLS Delia 720 who records a progeny weaning ratio of 103 on four natural calves and a progeny yearling ratio of 105 on two head along with progeny IMF and ribeye ratios of 113 and 103, respectively, on eight head.
- A maternal brother, ONEILLS Marshall Lad, is the \$13,000 record-selling over all breeds at the 2013 Iowa Beef Expo.
- Maternal siblings selling as embryos include the \$2,700 record-selling embryos of the 2015 National Western Foundation Female Sale.



ONEILLS 9Q13 - This full brother to Lots 14 and 14A is a maternal brother to Reference Sire F and Lots 13 and 14B.

ONEILLS DELIA FAMILY



ONEILLS 72E DELTA - Lot 15



ONEILLS 72E DELTA - Lot 15 pictured as a yearling.

15

ONEILLS 72E Delta

Birth Date: 2-9-2011	Bull +16990441	Tattoo: 131	Tag: 1669B	CW
Happyvale Grand Blackcap 30X	Happyvale Blackcap 67M			+9
Happyvale Blackcap G 72E	Happyvale Grand Violet 30T			MARB
#8191993	Happyvale Bar Neonia 7T	Eston Blackcap of RB4		+ .30
		Bar Blackcap Neonia 3		RE
				+ .11
	ONeills Prime Force	+ONeills Stockman 587		FAT
ONeills Delia 732	ONeills Eraline 221	ONeills Eraline 221		- .007
16404852	+ONeills Delia 725	#Isu Imaging Q 9111		\$W
		ONeills Delia 715		-10.79

CED	BEPD	WEPD	YEPD	RADG	SC	MILK	\$B
-8	.38	+6.2	.50	+28	.39	+49	.35
				+14	.23	-.17	.29
						+6	.22
							+65.05

- FOR REFERENCE AND FOR SALE.
- The powerful O'Neill outcross sire who has served as senior herd sire in the O'Neill breeding program, contributing extra volume, thickness and super feet and bone with extra fleshing ability.
- His sire, Happyvale Blackcap G 72E, the O'Neill foundation Pathfinder Sire otherwise known as the roughage converter, and this great bull traces to him six times in his pedigree.



HAPPYVALE BLACKCAP G 72E - Featuring the progeny and influence of this O'Neill foundation Pathfinder Sire who is referred to as the roughage converter.

- His dam, O'Neill Delia 732, is a great female with a progeny weaning ratio of 109 on one natural calf and she is by the female-producing sire, O'Neill Prime Force.
- A maternal sister was the heaviest heifer calf in the 2011 O'Neill calf crop with a 205-day weight of 841 pounds for a weaning ratio of 109.
- A full sister to the dam of this bull is the \$7,250 top-selling female of the 2011 O'Neill Bid-Off.
- The grandam is a full sister to O'Neill Lucky Boy and she produced the \$9,750 top-selling female of the 2009 O'Neill Bid-Off and the \$7,250 third top-selling female of the 2012 O'Neill Bid-Off, along with the \$7,000 second top-selling bull of the 2014 Maifeld/O'Neill Sale to Kodry Angus of Iowa.

ONEILLS Delia 765

Birth Date: 9-15-2012	Cow +17575921	Tattoo: 1222	Tag: 1716 COW	CW
Happyvale Grand Blackcap 30X	Happyvale Blackcap 67M			+10
Happyvale Blackcap G 72E	Happyvale Grand Violet 30T			MARB
#8191993	Happyvale Bar Neonia 7T	Eston Blackcap of RB4		+ .42
		Bar Blackcap Neonia 3		RE
				+ .02
	ONeills Prime Force	+ONeills Stockman 587		FAT
ONeills Delia 732	ONeills Eraline 221	ONeills Eraline 221		- .038
16404852	+ONeills Delia 725	#Isu Imaging Q 9111		\$W
		ONeills Delia 715		+5.56

CED	BEPD	WEPD	YEPD	RADG	SC	MILK	\$B
+1	.25	+2.3	.29	+29	.25	+49	.24
				+1.15	.05	-1.07	.05
						+7	.24
							+67.28

- A full sister to both the O'Neill senior herd sire who sells as Lot 15 and to the cow featured as Lot 17.
- This cow is by the O'Neill foundation Pathfinder Sire, Happyvale Blackcap G 72E, who is linebred throughout O'Neill pedigrees.
- The dam has a progeny weaning ratio of 109 on one natural calf and she was produced from a full sister to O'Neill Lucky Boy.
- Sells with a heifer calf at side (Lot 16A) calved September 1, 2016 by ONEILLS GERONIMO. Tattoo 716. Tag 1716 Heifer. Birth weight 96 pounds.

ONEILLS DELIA FAMILY

- A full sister to the O'Neill senior herd sire and featured outcross sire, ONEills 72E Delta, by the O'Neill foundation Pathfinder Sire, Happyvale Blackcap G 72E.
- The donor dam of this cow has a progeny weaning ratio of 109 on one natural calf and the grandam records a progeny weaning ratio of 102 on three calves and a progeny yearling ratio of 107 on two head along with progeny IMF and ribeye ratios of 109 and 102, respectively, on eight head.



ONEILLS DELIA 748 - Lot 17



ONEILLS DELIA 732 - The dam of Lots 15, 16 and 17.

17 ONEills Delia 748

Birth Date: 2-7-2011 Cow +16964434 Tattoo: 121 Tag: 16990 COW

Happyvale Grand Blackcap 30X Happyvale Blackcap 67M
Happyvale Blackcap G 72E Happyvale Grand Violet 30T
 #8191993 Happyvale Bar Neonia 7T Bar Blackcap Neonia 3

ONEills Prime Force +ONEills Stockman 587
ONEills Delia 732 ONEills Eraline 221
 16404852 +ONEills Delia 725 #Isu Imaging Q 9111
 ONEills Delia 715

	CW
	+16
	MARB
	+ .48
	RE
	+ .17
	FAT
	- .052
	\$W
	- .14

CED	BEPD	WEPD	YEPD	RADG	SC	MILK	\$B							
-1	.28	+3.3	.35	+27	.28	+48	.25	+16	.16	-.05	.21	+8	.24	+88.34

17A ONEills Delia 790

Birth Date: 2-2-2016 Cow 18564928 Tattoo: 106 Tag: 1690 HEIFER

#SAV Pioneer 7301 #SAV Final Answer 0035 [RDF]
ONEills Frontiersman SAV Blackbird 5297
 17281878 +ONEills Royal Lady Elaine #ONEills Expedition
 #Happyvale Blackcap G 72E +ONEills Royal Lady 29
ONEills Delia 748 Happyvale Grand Blackcap 30X
 +16964434 ONEills Delia 732 Happyvale Bar Neonia 7T
 ONEills Prime Force
 +ONEills Delia 725

	CW
	I+32
	MARB
	I+ .43
	RE
	I+ .64
	FAT
	I- .025
	\$W
	+28.32

CED	BEPD	WEPD	YEPD	RADG	SC	MILK	\$B							
I-1	.05	I+3.7	.05	I+47	.05	I+84	.05	I+23	.05	I+15	.05	I+15	.05	+114.73

- Bred April 15, 2016 to ONEILLS BLACK BARDOLIER.

- Birth weight 70 pounds.

- A popular favorite of the 2016 O'Neill heifer calf crop with an intriguing blending of the Delia and Royal Lady families by the \$100,000 valued ONEills Frontiersman.
- The dam of this incredible heifer is a flush sister to ONEills 72E Delta, by the O'Neill foundation Pathfinder Sire, Happyvale Blackcap G 72E.
- This heifer traces to a third dam who is a full sister to ONEills Lucky Boy and a maternal sister to a long line of prominent sires.



ONEILLS DELIA 790 - Lot 17A



ONEILLS DELIA 725 - The grandam of Lots 15, 16 and 17, and dam of Lot 18.

ONEILLS DELIA FAMILY



ONEILLS OMAI KING 25 - Lot 19

ONEILLS BOOMERANG - Maternal brother to Lots 19 and 19A.



18 Oneills Delia 762

Birth Date: 3-2-2012	Cow +17343771	Tattoo: 862	Tag: 1709 COW
#Gardens Prime Star	#N Bar Prime Time D806		
ONEills Prime Star 80	Green Garden Jilt C242 S1		
+16717557 ONEills Eraline 234	#ONEills Expedition		
	+ONEills Eraline 231		
	#GT Expo		
#Isu Imaging Q 9111	Summitcrest Pride 351F		
ONEills Delia 725	+Circle Oak Traveler 524		
+15901240 ONEills Delia 715	#+ONEills Delia 703		

CW	+30
MARB	+ .99
RE	+ .49
FAT	+ .015
\$W	+21.57
\$B	+110.82

- The dam of ONEills Frontiersman 225 who sold for \$9,000 to Joe Teixeira of Connecticut.
- This daughter of ONEills Prime Star 80 has a progeny weaning ratio of 102 on one calf and she is a maternal sister to the dam of Lots 15, 16 and 17, stemming from ONEills Delia 725 who is a full sister to ONEills Lucky Boy.
- Bred April 15, 2016 to ONEILLS BLACK BARDOLIER.



ONEILLS FRONTIERSMAN 225 - His dam sells as Lot 18.

19 Oneills OMAI King 25 [OSF]

Birth Date: 1-6-2015	Bull 18252199	Tattoo: 25	Tag: 1670-2 BULL
#+BT Crossover 758N	#CA Future Direction 5321		
ONEills OMAI King	BT Royal Pride 237G		
16478826 +ONEills Royal Lady 40	+SAF 598 Bando 5175		
	+ONEills Royal Lady 28		
	#N Bar Prime Time D806		
#GT Shear Force	#GT Siskin 106		
ONEills Delia 740	+Circle Oak Traveler 524		
+16406005 ONEills Delia 715	#+ONEills Delia 703		

CW	+42
MARB	+ .78
RE	+ .55
FAT	+ .003
\$W	+39.02
\$B	+135.27

- This powerful coming two-year-old bull is sired by ONEills OMAI King and was produced as a natural calf from the featured donor, ONEills Delia 740 who records a progeny weaning ratio of 111 combined with progeny IMF and ribeye ratios of 115 and 102, respectively, on three calves.
- A maternal brother, ONEills Boomerang, was the \$8,000 top-selling bull of the 2012 Sioux Empire Farm Show.
- The dam of this bull is a full sister to ONEills Power Force and a maternal sister to ONEills Expedition, ONEills Adventure K325 and ONEills Lucky Boy.
- BW-59, 205-793, IMF-5.99, RE-16.2, SC-41

19A Oneills Frontiersman 615

Birth Date: 9-15-2015	Bull +18566321	Tattoo: 615	Tag: 1670A BULL
#SAV Pioneer 7301	#SAV Final Answer 0035 [RF]		
ONEills Frontiersman	SAV Blackbird 5297		
17281878 +ONEills Royal Lady Elaine	#ONEills Expedition		
	+ONEills Royal Lady 29		
	#N Bar Prime Time D806		
#GT Shear Force	#GT Siskin 106		
ONEills Delia 740	+Circle Oak Traveler 524		
+16406005 ONEills Delia 715	#+ONEills Delia 703		

CW	+40
MARB	+ .61
RE	+ .61
FAT	+ .040
\$W	+43.43
\$B	+120.07

- This fall yearling bull from the embryo program is a maternal brother to ONEills Boomerang, the \$8,000 top-selling bull of the 2012 Sioux Empire Farm Show.
- This son of the \$100,000 valued ONEills Frontiersman is from a donor dam who combines a progeny weaning ratio of 111 with progeny IMF and ribeye ratios of 115 and 102, respectively, on three calves.
- Birth weight 80 pounds.

ONEILLS DELIA FAMILY



ONEILLS POWER FORCE -
Maternal brother to the dam of
Lots 20, 20A and 20B.



ONEILLS DELIA 728 - The dam of Lots 20, 20A and 20B.

ONEILLS ADVENTURE K325 -
Maternal brother to the dam of
Lots 20, 20A and 20B.

20 ONEills Delia 786

Birth Date: 2-18-2016 Cow +18585630 Tattoo: 156 Tag: 1665A HEIFER
• Birth weight 86 pounds.

20A ONEills Delia 783

Birth Date: 9-20-2015 Cow +18566326 Tattoo: 685 Tag: 1665D HEIFER
• Birth weight 78 pounds.

20B ONEills Frontiersman 655

Birth Date: 9-17-2015 Bull +18566324 Tattoo: 655 Tag: 1665C BULL

ONEills Frontiersman
17281878 +ONEills Royal Lady Elaine

#Gardens Prime Star
ONEills Delia 728
+16220635 ONEills Delia 715

CW
I+41
MARB
I+ .72
RE
I+ .81
FAT
I+ .017
\$W
+35.87

CED	BEPD	WEPD	YEPD	RADG	SC	MILK	\$B
I-3 .05	I+4.6 .05	I+55 .05	I+103 .05	I+27 .05	I+72 .05	I+18 .05	+132.21

- Birth weight 82 pounds.
- This group of full siblings from the embryo program are by the \$100,000 valued ONEills Frontiersman from a high-marbling donor dam, ONEills Delia 728, who records a progeny IMF ratio of 119 on two head and ranks among the breed's top Marbling EPD cows with embryos that have sold for export to France.
- The dam is a maternal sister to ONEills Expedition, ONEills Adventure K325, ONEills Lucky Boy and ONEills Power Force.

21 Kodry Delia 34 [CAF]

Birth Date: 3-14-2011 Cow 17233266 Tattoo: 1824 Tag: 81-34 COW

Circle A Adventure 0124
ONEills Adventure K426
+15539265 ONEills Delia 715

+ONEills Adventure K426
Kodry Delia 24
16047612 Kodry Delia 7

CW
N/A
MARB
N/A
RE
N/A
FAT
N/A
\$W
+27.63

CED	BEPD	WEPD	YEPD	RADG	SC	MILK	\$B
I-4 .16	I+4.2 .24	I+46 .18	I+81 .09	N/A	N/A	N/A	+20 .16

- The result of a sire/daughter mating by ONEills Adventure K426 who is a full brother to both ONEills Expedition and ONEills Adventure K325.
- This cow has a progeny weaning ratio of 111 on one calf and she is linebred to the Delia family.
- Bred June 10, 2016 to ONEILLS FRONTIERSMAN and exposed to him.



ONEILLS LUCKY BOY - Maternal
brother to the dam of Lots 20,
20A and 20B.



ONEILLS RENOVATION 920 -
Produced from a full sister to
ONEills Lucky Boy.

21A ONEills Absolute 596

Birth Date: 4-16-2016 Bull 18585652 Tattoo: 596 Tag: 81-34 BULL CALF

ONEills Absolute
+17876887 ONEills Eraline 234

+ONEills Adventure K426
Kodry Delia 34
17233266 Kodry Delia 24

#SAV Final Answer 0035 [PDF]
SAV Blackbird 5297
#ONEills Expedition
+ONEills Eraline 231
Circle A Adventure 0124
ONEills Delia 715
+ONEills Adventure K426
Kodry Delia 7

CW
N/A
MARB
N/A
RE
N/A
FAT
N/A
\$W
+35.90

CED	BEPD	WEPD	YEPD	RADG	SC	MILK	\$B
I+0 .05	I+3.4 .05	I+49 .05	I+86 .05	N/A	N/A	N/A	I+23 .05

- An April herd sire prospect by ONEills Absolute, featuring a linebred pedigree through ONEills Expedition and his full brother, ONEills Adventure K426.
- The dam has a progeny weaning ratio of 111 on one calf.
- Birth weight 82 pounds.

21B ONEills Renovation 5834

Birth Date: 5-11-2015 Bull 18137944 Tattoo: 5834 Tag: 58-34 BULL

+ONEills Renovation
ONEills Renovation 920
16917354 +ONEills Delia 725

+ONEills Adventure K426
Kodry Delia 34
17233266 Kodry Delia 24

#+ONEills Renovator
+ONEills Royal Lady 40
#Isu Imaging Q 9111
ONEills Delia 715
Circle A Adventure 0124
ONEills Delia 715
+ONEills Adventure K426
Kodry Delia 7

CW
N/A
MARB
N/A
RE
N/A
FAT
N/A
\$W
+22.92

CED	BEPD	WEPD	YEPD	RADG	SC	MILK	\$B
I+11 .05	I+5.3 .05	I+47 .05	I+86 .05	N/A	N/A	N/A	I+20 .05

- This strong-age bull is linebred to the Delia family, sired by ONEills Renovation 920 who is the result of mating ONEills Renovation with a full sister to ONEills Lucky Boy.
- The dam has a progeny weaning ratio of 111 on one calf and she is the result of a sire/daughter mating.



ONEILLS DELIA 715 - Featuring her influence.

ONEILLS ERALINE FAMILY



ONEILLS ABSOLUTE - Reference Sire G



ONEILLS ERALINE 234 - The dam of Reference Sire G and Lots 22, 22A, 23, 24 and 25.

ONeills Absolute

Birth Date: 9-13-2013 Bull +17876887 Tattoo: 1003
 #SAV Final Answer 0035 [RDF] #Sitz Traveler 8180
SAV Pioneer 7301 SAV Emulous 8145
#15688392 SAV Blackbird 5297 #+Boyd New Day 8005
 SAV Blackbird 1082
 #O'Neill Expedition Circle A Adventure 0124
O'Neill Eraline 234 O'Neill Delia 715
15407326 +O'Neill Eraline 231 #+SAF 598 Bando 5175
 O'Neill Eraline 221

CW
+27
MARB
+ .41
RE
+ .41
FAT
+ .042
\$W
+47.12

CED	BEPD	WEPD	YEPD	RADG	SC	MILK	\$B
+4	.36	+2.6	.40	+51	.32	+91	.34
+21	.40	+49	.42	+25	.25	+90.53	

- FOR REFERENCE ONLY.
- The O'Neill featured herd sire backed by the herd sire producing Eraline family and sired by the Genex/CRI Pathfinder Sire, SAV Pioneer 7301, whose progeny include the breed's all-time world record-selling bull at auction.
- The proven donor dam of this bull has a progeny weaning ratio of 103 on four natural calves combined with an impressive progeny IMF ratio of 114 on 20 head and she sold one-half interest for \$10,000 to Lonesome

- Dove in Minnesota and is regarded as one of the all-time great daughters of the high-performance and high feed-efficiency Pathfinder Sire, O'Neill Expedition.
- Maternal brothers include the important herd sires, O'Neill Earl Marshall, O'Neill Prime Star 80, O'Neill Legacy and O'Neill Influence, as well as a host of other top-selling bulls that have highlighted past O'Neill and Iowa Beef Expo sales.
- A maternal sister was the \$13,750 top-selling female of the 2010 O'Neill Bid-Off.
- The grandam, O'Neill Eraline 231, is a maternal sister to O'Neill Prime Force who sold one-half interest for \$25,000 as the top-selling Lot 1 bull of the 2003 O'Neill Sale, as well as O'Neill VRD 324 who was the \$27,500 top-selling bull over all breeds at the 2006 Iowa Beef Expo, O'Neill Prime who was the \$9,500 top-selling bull of the 2008 Iowa Beef Expo and the 2007 National Junior Angus Show Grand Champion Carcass Steer.



ONEILLS EARL MARSHALL
- Maternal brother to Reference Sire G.



ONEILLS LEGACY - Maternal brother to Reference Sire G.



ONEILLS PRIME STAR 80 - Maternal brother to Reference Sire G.



ONEILLS INFLUENCE - Maternal brother to Reference Sire G.

ONEILLS ERALINE FAMILY

- A fantastic full sister to the O'Neill herd sire, ONeills Absolute.
- This heifer is also a maternal sister to the O'Neill herd sires, ONeills Earl Marshall, ONeills Prime Star 80, ONeills Legacy and ONeills Influence, produced from ONeills Eraline 234 who combines a progeny weaning ratio of 103 on four natural calves with a progeny IMF ratio of 114 on 20 head.



ONEILLS ERALINE 310 - Lot 22



SAV PIONEER 7301 - The sire of Lot 22.

22 ONeills Eraline 310

Birth Date: 3-2-2016	Cow +18567627	Tattoo: 266	Tag: 1640A HEIFER	CW			
#SAV Final Answer 0035 [PDF]	#Sitz Traveler 8180			I-36			
SAV Pioneer 7301	SAV Emulous 8145			MARB			
#15688392 SAV Blackbird 5297	#+Boyd New Day 8005			I-46			
	SAV Blackbird 1082			RE			
				I-58			
				FAT			
#ONeills Expedition	Circle A Adventure 0124			I-044			
ONeills Eraline 234	ONeills Delia 715			\$W			
15407326 +ONeills Eraline 231	#+SAF 598 Bando 5175			+41.04			
	ONeills Eraline 221						
CED	BEPD	WEPD	YEPD	RADG	SC	MILK	\$B
I-3 .05	I+3.8 .05	I+52 .05	I+94 .05	I+22 .05	I+1.05 .05	I+25 .05	+109.46

22A ONeills Eraline 303

Birth Date: 10-29-2015	Cow 18564922	Tattoo: 845	Tag: 1640 HEIFER	CW			
+ONeills Renovation	#+ONeills Renovator			I+28			
ONeills Jock	+ONeills Royal Lady 40			MARB			
16964416 ONeills Royal Lady 56	#ONeills Expedition			I+22			
	+ONeills Royal Lady 39			RE			
				I+28			
				FAT			
#ONeills Expedition	Circle A Adventure 0124			I-.062			
ONeills Eraline 234	ONeills Delia 715			\$W			
15407326 +ONeills Eraline 231	#+SAF 598 Bando 5175			+32.73			
	ONeills Eraline 221						
CED	BEPD	WEPD	YEPD	RADG	SC	MILK	\$B
I+2 .05	I+1.7 .05	I+42 .05	I+75 .05	I+23 .05	I+94 .05	I+20 .05	+95.47

- A phenomenal fall yearling heifer by ONeills Jock, produced as a natural calf, from the proven donor, ONeills Eraline 234 who is known as the dam of herd sires.
- The dam of this heifer has a progeny weaning ratio of 103 on four natural calves and a progeny yearling ratio of 114 on 20 head, and her sons include ONeills Absolute, ONeills Earl Marshall, ONeills Prime Star 80, ONeills Legacy and ONeills Influence, while her outstanding daughters include the \$13,750 top-selling female of the 2010 O'Neill Bid-Off.



ONEILLS ERALINE 303 - Lot 22A



ONEILLS JOCK - The sire of Lot 22A.

ONEILLS ERALINE FAMILY



ONEILLS ERALINE 280 - Lot 23

- A top producer from the time-tested Eraline family with a progeny birth ratio of 96 combined with a progeny weaning ratio of 102 on two calves.
- This cow is by the record-setting Genex/CRI Pathfinder Sire, SAV Final Answer 0035 who led the breed for annual registrations.
- The dam has a progeny weaning ratio of 103 on four natural calves and a progeny IMF ratio of 114 on 20 head and she is best known as the dam of the herd sires, Oneills Earl Marshall, Oneills Prime Star 80, Oneills Legacy, Oneills Influence and Oneills Absolute.
- A daughter, Oneills Eraline 301, sold to Jim Macholan of Nebraska in the 2015 O'Neill Bid-Off.



ONEILLS ERALINE 234 - The dam of Reference Sire G and Lots 22, 22A, 23, 24 and 25.

23 Oneills Eraline 280

Birth Date: 3-6-2012	Cow +17315317	Tattoo: 662	Tag: 1710 COW	CW			
#Sitz Traveler 8180	#GDAR Traveler 71			+22			
SAV Final Answer 0035 [RDF]	Sitz Everelda Entense 1137			MARB			
#13592905 SAV Emulous 8145	#Bon View Bando 598			+ .58			
	SAV Sky Emulous 2124			RE			
	#Oneills Expedition			+ .28			
Oneills Eraline 234	Circle A Adventure 0124			FAT			
15407326 +Oneills Eraline 231	Oneills Delia 715			+ .039			
	#+SAF 598 Bando 5175			\$W			
	Oneills Eraline 221			+42.95			
CED	BEPD	WEPD	YEPD	RADG	SC	MILK	\$B
+3 .30	+2.3 .34	+52 .29	+91 .27	+23 .05	+1.06 .05	+23 .29	+89.77

• Bred April 23, 2016 to ONEILLS JOCK and exposed to him.

23A Oneills Eraline 304

Birth Date: 1-15-2016	Cow 18564925	Tattoo: 46	Tag: 1710 HEIFER	CW			
#SAV Pioneer 7301	#SAV Final Answer 0035 [RDF]			I+35			
Oneills Frontiersman	SAV Blackbird 5297			MARB			
17281878 +Oneills Royal Lady Elaine	#Oneills Expedition			I+ .48			
	+Oneills Royal Lady 29			RE			
	#SAV Final Answer 0035 [RDF]			I+ .70			
Oneills Eraline 280	#Sitz Traveler 8180			FAT			
+17315317 Oneills Eraline 234	SAV Emulous 8145			I+ .021			
	#Oneills Expedition			\$W			
	+Oneills Eraline 231			+42.91			
CED	BEPD	WEPD	YEPD	RADG	SC	MILK	\$B
+1 .05	+3.2 .05	+59 .05	+106 .05	N/A	N/A	N/A	N/A
						+23 .05	+116.88

• Birth weight 81 pounds.



ONEILLS ERALINE 304 - Lot 23A

- A phenomenal Eraline heifer by the \$100,000 valued Oneills Frontiersman, produced from a dam who balances a progeny birth ratio of 96 with a progeny weaning ratio of 102 on two calves.
- This heifer is double-bred to the Pathfinder Sire, SAV Final Answer 0035, and stems from the herd sire producing Oneills Eraline 234 whose sons include Oneills Earl Marshall, Oneills Prime Star 80, Oneills Legacy, Oneills Influence and Oneills Absolute.



ONEILLS ERALINE 301 - Daughter of Lot 23 and maternal sister to Lot 23A.

ONEILLS ERALINE FAMILY

- This prize possession from the Eraline family balances a progeny birth ratio of 88 with progeny weaning and yearling ratios of 103 and 104, respectively, along with a progeny IMF ratio of 128 on one head.
- This cow is by the highly proven Pathfinder Sire, SAV Bismarck 5682, who led the breed for annual registrations.
- Maternal brothers include the O'Neill herd sires, ONeills Earl Marshall, ONeills Prime Star 80, ONeills Legacy, ONeills Influence and ONeills Absolute, and maternal sisters are featured in this sale.



ONEILLS ERALINE 234 - *The dam of Reference Sire G and Lots 22, 22A, 23, 24 and 25.*



ONEILLS ERALINE 281 - Lot 24

24 ONEILLS Eraline 281

Birth Date: 2-21-2012	Cow +17315311	Tattoo: 452	Tag: 1711 COW	CW
#+GAR Grid Maker				+27
SAV Bismarck 5682 [PDF]				MARB
#+15109865 SAV Abigale 0451				+ .58
#GDAR Traveler 044				RE
GAR Precision 2536				+ .58
#Schoenes Fix It 826				FAT
SAV Abigale 6062				- .055
#ONeills Expedition				\$W
Circle A Adventure 0124				+38.05
ONeills Eraline 234				ONeills Delia 715
15407326 +ONeills Eraline 231				#+SAF 598 Bando 5175
				ONeills Eraline 221
CED	BEPD	WEPD	YEPD	RADG
+1 .31	+3.6 .33	+51 .29	+90 .28	+28 .27
				+1.00 .27
				+23 .27
				\$B
				+116.73

- Bred May 2, 2016 to ONEILLS BLACK BARDOLIER.

24A ONEILLS Emblem

Birth Date: 3-2-2016	Bull 18567285	Tattoo: 276	Tag: 1711 BULL	CW
#SAV Pioneer 7301				+44
ONeills Frontiersman				MARB
17281878 +ONeills Royal Lady Elaine				+ .55
#SAV Final Answer 0035 [PDF]				RE
SAV Blackbird 5297				+ .86
#ONeills Expedition				FAT
+ONeills Royal Lady 29				- .011
#+SAV Bismarck 5682 [PDF]				\$W
#+GAR Grid Maker				+34.61
ONeills Eraline 281				ONeills Expedition
+17315311 ONeills Eraline 234				+ONeills Eraline 231
CED	BEPD	WEPD	YEPD	RADG
-6 .29	+6.0 .34	+59 .26	+106 .30	+27 .33
				+84 .37
				+22 .15
				\$B
				+137.53

- Birth weight 88 pounds.

- The mating of the sire of this bull to his famous maternal grandam produced ONeills Conquest who sold one-half interest as a feature of the 2015 Maifeld/O'Neill Sale.
- The dam of this bull is also a maternal brother to the O'Neill herd sires, ONeills Earl Marshall, ONeills Prime Star 80, ONeills Legacy, ONeills Influence and ONeills Absolute.
- The grandam has a progeny weaning ratio of 103 on four natural calves and a progeny IMF ratio of 114 on 20 head.



ONEILLS CONQUEST - *Maternal brother to Reference Sire G and Lots 22, 22A, 23, 24 and 25.*



ONEILLS EMBLEM - Lot 24A

ONEILLS ERALINE FAMILY



ONEILLS ERALINE 260 - Lot 25



ONEILLS LEGACY - Full brother to Lot 25.

25 ONEILLS Eraline 260

Birth Date: 2-8-2010	Cow +16701767	Tattoo: 670	Tag: 1680 COW	CW										
#QAS Traveler 23-4	#Band 234 of Ideal 3163	QAS Blackbird Eve 601 1	#PBC 707 1M F0203	+20										
DHD Traveler 6807	Bemindful Maid of RR 1079	Circle A Adventure 0124	ONEills Delia 715	MARB										
#10858958	#ONEills Expedition	ONEills Eraline 231	ONEills Eraline 221	+ .16										
				RE										
				+ .14										
				FAT										
				- .080										
				\$W										
				+12.11										
CE	BE	WE	YE	RADG	SC	MILK	\$B							
-6	.36	+5.0	.42	+38	.34	+73	.31	+24	.35	+29	.35	+19	.32	+76.08

- This impressive flush sister to the O'Neill herd sire, ONEills Legacy, is from the mating of the time-tested Pathfinder Sire, DHD Traveler 6807, with ONEills Eraline 234 who is known as the dam of herd sires.
- This cow is also a maternal sister to ONEills Earl Marshall who sold one-half interest for \$6,500 to top the 2009 O'Neill Sale and later sold one-half interest for \$8,750 as a four-year-old bull, ONEills Prime Star 80 who was the highest IMF bull of the 2010 O'Neill calf crop and sold one-half interest for \$11,000 to top the 2011 Sioux Empire Farm Show,



ONEILLS ERALINE 234 - The dam of Reference Sire G and Lots 22, 22A, 23, 24 and 25.

25G ONEILLS Pursuit 556

Birth Date: 4-3-2016	Bull 18586160	Tattoo: 556	Tag: 1680 BULL	CW										
#SAV Pioneer 7301	#SAV Final Answer 0035 [PDF]	SAV Blackbird 5297	#SAV 8180 Traveler 004 [PDF]	+39										
SAV Pursuit 0160	SAV Abigale 5650	SAV Abigale 0451		MARB										
16687663				+ .29										
				RE										
				+ .66										
				FAT										
				+ .025										
				\$W										
				+31.31										
CE	BE	WE	YE	RADG	SC	MILK	\$B							
+2	.05	+3.8	.05	+46	.05	+82	.05	+1.19	.05	+8.7	.05	+22	.05	+109.68

- A son of the Herbster sire, SAV Pursuit 0160, from an impressive dam who is a full sister to ONEills Legacy.
- The dam of this bull is also a maternal sister to a long line of noted sires including the O'Neill herd sires, ONEills Earl Marshall, ONEills Prime Star 80, ONEills Influence and ONEills Absolute.
- Birth weight 78 pounds.

ONEILLS ERALINE FAMILY

26 ONEills Eraline 283

Birth Date: 5-2-2012	Cow 17343754	Tattoo: 392	Tag: 12-00 COW	CW
Circle A Adventure 0124	#SAF Focus of ER			+49
ONEills Expedition	+Acf Evergreen 8007			MARB
#14761330 ONEills Delia 715	+Circle Oak Traveler 524			+56
	#+ONEills Delia 703			RE
	#Sitz Traveler 8180			+57
ONEills Eraline 244	+Boyd Forever Lady 8003			FAT
#15865812 +ONEills Eraline 231	#+SAF 598 Bando 5175			-.024
	ONEills Eraline 221			\$W
				+32.39

CED	BEPD	WEPD	YEPD	RADG	SC	MILK	\$B
-2	.32	+3.5	.40	+49	.31	+91	.25
+26	.21	+7.8	.25	+25	.26	+142	.69

- This daughter of the high-performance and high feed-efficiency Pathfinder Sire, ONEills Expedition, has a progeny weaning ratio of 107 on one natural calf.
- The Pathfinder Dam of this cow records a progeny weaning ratio of 107 on six calves and she produced ONEills Eraline 305, the \$20,000 top-selling female over all breeds at the 2016 Iowa Beef Expo; the \$6,250 ONEills Eraline 295, and ONEills Exclusive 764 who sold to Moffett Angus of Iowa.
- Bred May 20, 2016 to ONEILLS BLACK BARDOLIER.

26A ONEills Absolute 446

Birth Date: 3-16-2016	Bull 18585641	Tattoo: 446	Tag: 12-00 BULL	CW
#SAV Pioneer 7301	#SAV Final Answer 0035 [PDF]			+36
ONEills Absolute	SAV Blackbird 5297			MARB
+17876887 ONEills Eraline 234	#ONEills Expedition			+47
	+ONEills Eraline 231			RE
	Circle A Adventure 0124			+39
ONEills Eraline 283	ONEills Delia 715			FAT
17343754 #ONEills Eraline 244	#SAV 8180 Traveler 004 [PDF]			+0.009
	+ONEills Eraline 231			\$W
				+35.20

CED	BEPD	WEPD	YEPD	RADG	SC	MILK	\$B
-1	.27	+3.8	.32	+50	.23	+90	.27
+23	.31	+7.3	.36	+27	.15	+113	.48

- This March herd sire prospect by ONEills Absolute is double-bred to the Pathfinder Sire, ONEills Expedition, from a dam with a progeny weaning ratio of 107 on one calf.
- The Pathfinder grandam is one of the top producers identified from the Eraline family.
- Birth weight 70 pounds.

26B Oneill Eraline Embryos

Four Frozen Embryos			
#Gardens Highmark	#Summitcrest Scotch Cap 0B45		
Rito 9Q13 of Rita 5F56 GHM	Green Garden Pride 6128 S1		
+16408438 +Rita 5F56 of 1198 FD	#CA Future Direction 5321		
	+Rita 1198 of 2536 Rito 616		
	#SAV 8180 Traveler 004 [PDF]	#Sitz Traveler 8180	
ONEills Eraline 244	+ONEills Eraline 231	+Boyd Forever Lady 8003	
#15865812		#+SAF 598 Bando 5175	
		ONEills Eraline 221	

CED	BEPD	WEPD	YEPD	RADG	SC	MILK
-2	.75	+3.6	.92	+55	.87	+108
-2	.41	+3.7	.50	+53	.38	+94

CW	MARB	RE	FAT	\$W	\$B
+57	+.76	+1.83	-.021	+28.61	+181.83
+46	+.76	+.05	+.053	+44.92	+126.52

- These embryos are full siblings to the great ONEills Eraline 305, the \$20,000 top-selling female over all breeds at the 2016 Iowa Beef Expo and maternal siblings to the \$6,250 ONEills Eraline 295, as well as ONEills Exclusive 764.
- The Pathfinder Dam has a progeny weaning ratio of 107 on six calves and she is a maternal sister to ONEills Eraline 234.



ONEILLS ERALINE 244 - The dam of Lots 26 and 26B.

27 ONEills Eraline 1200

Birth Date: 3-29-2014	Cow 17816932	Tattoo: 1200	Tag: 14-02 COW	CW
#SAV Pioneer 7301	#SAV Final Answer 0035 [PDF]			N/A
ONEills Premier	SAV Blackbird 5297			MARB
17289803 +ONEills Royal Lady 60	#ONEills Expedition			N/A
	+ONEills Royal Lady 29			RE
	Circle A Adventure 0124			N/A
ONEills Eraline 283	ONEills Delia 715			FAT
17343754 #ONEills Eraline 244	#SAV 8180 Traveler 004 [PDF]			N/A
	+ONEills Eraline 231			\$W
				+33.07

CED	BEPD	WEPD	YEPD	RADG	SC	MILK	\$B
-2	.23	+3.6	.32	+50	.21	+92	.12
N/A	N/A	N/A	N/A	N/A	N/A	+22	.12
N/A	N/A	N/A	N/A	N/A	N/A	N/A	N/A

- This two-year-old cow recorded an individual weaning ratio of 107 as the first calf from the dam who sells as Lot 26.
- The sire of this cow is a full brother-in-blood to ONEills Frontiersman.
- The Pathfinder grandam produced the \$20,000 ONEills Eraline 305.
- Bred June 6, 2016 to ONEILLS JOCK and exposed to him.

27A ONEills Eraline 308

Birth Date: 4-2-2016	Cow Reg.No.Pdg.	Tattoo: 546	Tag: 14-02 HEIFER
#SAV Pioneer 7301	#SAV Final Answer 0035 [PDF]		
ONEills Resolute	SAV Blackbird 5297		
17866927 +ONEills Forever Eraline 38	#ONEills Expedition		
	+ONEills Forever Eraline 15		
ONEills Premier	#SAV Pioneer 7301		
ONEills Eraline 1200	+ONEills Royal Lady 60		
17816932 ONEills Eraline 283	#ONEills Expedition		
	#ONEills Eraline 244		

CED	BEPD	WEPD	YEPD	RADG	SC	MILK
+9	.38	-2	.43	+45	.32	+83
-2	.23	+3.6	.32	+50	.21	+92

CW	MARB	RE	FAT	\$W	\$B
+28	+.27	+.70	+.053	+40.29	+90.64
N/A	N/A	N/A	N/A	+33.07	N/A

- Stacking multiple generations of time-tested O'Neill genetics, this April heifer from the Eraline family is sired by ONEills Resolute.
- This heifer was produced as the first calf from a two-year-old dam by ONEills Premier, stemming from a grandam who sells as Lot 26, tracing to the Pathfinder Dam, ONEills Eraline 244.
- Birth weight 68 pounds.



ONEILLS ERALINE 308 - Lot 27A



ONEILLS ERALINE 305 - Full sister to Lot 26B and maternal sister to Lot 26.



ONEILLS EXCLUSIVE 764 - Maternal brother to Lots 26 and 26B.

ONEILLS ERALINE FAMILY



J.C. O'Neill ©

ONEILLS LADY ERALINE 104 - Lot 28



ONEILLS FRONTMAN - His dam sells as Lot 28.

28 Oneills Lady Eraline 104

Birth Date: 3-16-2011 Cow 16978143 Tattoo: 261 Tag: 1692 COW

Circle A Adventure 0124 #SAF Focus of ER
 +Acf Evergreen 8007
 +Circle Oak Traveler 524
 #+Oneills Delia 703

Oneills Expedition
 #14761330 Oneills Delia 715

#Vermilion Dateline 7078 #Connealy Dateline
 #Vermilion Blackbird 5044

Oneills Lady Eraline 100
 +14999317 +Oneills Lady Eraline 35

#+R&J Extra 893
 +Oneills Lady Eraline

CW	+45
MARB	
RE	+ .61
FAT	+ .79
\$B	- .114
\$W	+25.66

CED	BEPD	WEPD	YEPD	RADG	SC	MILK	\$B
-2 .32	+4.5 .41	+48 .32	+85 .26	+28 .23	+36 .28	+20 .29	+147.28

28A Oneills Lady Eraline 105

Birth Date: 3-1-2016 Cow 18585633 Tattoo: 256 Tag: 1692 HEIFER

+Oneills Renovation #+Oneills Renovator
 +Oneills Royal Lady 40
 #Oneills Expedition
 +Oneills Royal Lady 39

Oneills Jock
 16964416 Oneills Royal Lady 56

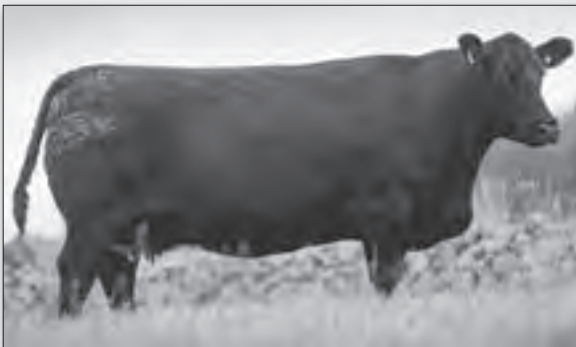
#Oneills Expedition
 Circle A Adventure 0124
 Oneills Delia 715
 #Vermilion Dateline 7078
 +Oneills Lady Eraline 35

CW	+36
MARB	
RE	+ .28
FAT	+ .68
\$B	- .080
\$W	+32.37

CED	BEPD	WEPD	YEPD	RADG	SC	MILK	\$B
+6 .05	+1.0 .05	+42 .05	+74 .05	+24 .05	+73 .05	+18 .05	+117.92

- A maternal sister to Blelack Lady Eraline J258, the 35,000 gns record-selling female in Scotland through the October 2016 Blelack Sale.
- This high-performance producer has a progeny weaning ratio of 106 combined with progeny IMF and ribeye ratios of 111 and 106, respectively, on three calves and they include Oneills Frontman who was selected by Miller Farms of Iowa through the 2016 Iowa Beef Expo.
- Bred May 25, 2016 to ONEILLS FRONTIERSMAN. Exposed to ONEILLS JOCK after July 4, 2016.

- This maternal sister to Oneills Frontman is from a productive dam whose maternal sister became the record-selling cow in Scotland through the October 2016 Blelack Sale.
- The dam has a progeny weaning ratio of 106 combined with progeny IMF and ribeye ratios of 111 and 106, respectively, on three head.
- The third dam is a full sister to the Pathfinder Sire, Oneills Exon, stemming from the legendary Oneills Lady Eraline.



BLELACK LADY ERALINE J258 - Maternal sister to Lot 28.

Congratulations to Neal and Graeme Massie of Blelack Angus on their record-selling Angus female in Scotland during the October 2016 Blelack Sale where Blelack Lady Eraline J258 was the 35,000 gns top-seller, and was produced from an embryo purchased from O'Neill Angus Farm, sired by Oneills Renovator from Oneills Lady Eraline 100.

ONEILLS ERALINE FAMILY



ONEILLS FOREVER ERALINE 91 - Lot 29



ONEILLS FOREVER ERALINE 23 - The dam of Lot 29 and maternal sister to Lot 30.

29 ONEills Forever Eraline 91

Birth Date: 3-12-2016 Cow Reg.No.Pdg. Tattoo: 386 Tag:

#Sitz Traveler 8180
SAV Final Answer 0035 (RDF)
 #13592905 SAV Emulous 8145

#GDAR Traveler 71
 Sitz Everelda Entense 1137
 #Bon View Bando 598
 SAV Sky Emulous 2124

#ONEills Expedition
ONEills Forever Eraline 23
 15350870 +ONEills Forever Eraline 15

Circle A Adventure 0124
 ONEills Delia 715
 #+Baldridge Notch AC
 +ONEills Forever Eraline 5

	CED	BEPD	WEPD	YEPD	RADG	SC	MILK
S	+12 .97	-1.3 .99	+57 .98	+96 .97	+20 .89	+1.35 .97	+23 .96
D	-9 .34	+5.8 .43	+46 .32	+84 .29	+30 .18	+.82 .24	+17 .33
	CW	MARB	RE	FAT	\$W	\$B	
S	+13	+.60	+.63	+.161	+72.08	+60.17	
D	+33	+.23	+.43	-.097	+16.45	+112.90	

- The finest of the Forever Eraline branches of the Eraline family.
- This tremendous brood cow prospect is by the record-setting Genex/ CRI Pathfinder Sire, SAV Final Answer 0035, who led the breed for annual registrations.

- The proven dam of this heifer has a progeny weaning ratio of 103 on seven calves as one of the top-producing daughters of the high-performance and high feed-efficiency Pathfinder Sire, ONEills Expedition.
- A maternal sister, ONEills Forever Eraline 65, was the \$10,500 top-selling female of the Earl Marshall 100th Birthday Celebration Sale in 2013 to Wibholm Angus Farm of Iowa.
- A full brother sold to Judalee Angus of Nebraska.
- Another maternal sister, ONEills Forever Eraline 85, is one of the extreme top prospects produced in the O'Neill program.
- A maternal sister sold to Al Rosendahl and others sold to Maifeld Inc.
- The dam of this heifer is a full sister to ONEills Forever Eraline 38 who is featured in this sale as Lot 30 and produced the O'Neill herd sire, ONEills Resolute.



ONEILLS FOREVER ERALINE 65 - Maternal sister to Lot 29.



ONEILLS FOREVER ERALINE 85 - Maternal sister to Lot 29.

ONEILLS ERALINE FAMILY

31 Oneills Forever Eraline 55

Birth Date: 9-1-2011	Cow 17215139	Tattoo: 731	Tag: 1696 COW	CW			
#Isu Imaging Q 9111	#GT Expo			+24			
Oneills Lucky Boy	Summitcrest Pride 351F			MARB			
+15863843 Oneills Delia 715	+Circle Oak Traveler 524			+ .46			
	#+Oneills Delia 703			RE			
				+ .35			
	Circle A Adventure 0124			FAT			
Oneills Forever Eraline 38	Oneills Delia 715			- .035			
+16404891 +Oneills Forever Eraline 15	#+Baldrige Notch AC			\$W			
	+Oneills Forever Eraline 5			+17.18			
CED	BEPD	WEPD	YEPD	RADG	SC	MILK	\$B
+5 .26	+1.5 .36	+38 .27	+76 .23	+24 .05	+47 .05	+13 .25	+94.02

- This daughter of the proven sire and successful champion, Oneills Lucky Boy, is a daughter of Lot 30 and a maternal sister to the O'Neill and Kodry sire, Oneills Resolute.
- This female features a linebred pedigree through the maternal brothers, Oneills Lucky Boy and Oneills Expedition.
- Will sell with a calf at side (Lot 31A) or close to calving by ONEILLS GERONIMO.



ONEILLS FOREVER ERALINE 30 - Lot 32

31B Oneills Forever Eraline 87

Birth Date: 11-1-2015	Cow 18564923	Tattoo: 855	Tag: 1696 HEIFER	CW			
+Oneills Renovation	#+Oneills Renovator			+26			
Oneills Jock	+Oneills Royal Lady 40			MARB			
16964416 Oneills Royal Lady 56	#Oneills Expedition			+ .21			
	+Oneills Royal Lady 39			RE			
				+ .46			
	#Isu Imaging Q 9111			FAT			
Oneills Forever Eraline 55	Oneills Delia 715			- .040			
17215139 +Oneills Forever Eraline 38	#Oneills Expedition			\$W			
	+Oneills Forever Eraline 15			+25.09			
CED	BEPD	WEPD	YEPD	RADG	SC	MILK	\$B
+10 .05	+1.6 .05	+37 .05	+70 .05	N/A	N/A	+15 .05	+85.93

- A full sister to Oneills Jock 694, sired by the O'Neill featured sire, Oneills Jock.
- The dam of this bull is linebred through the maternal brothers, Oneills Lucky Boy and Oneills Expedition, and she is a maternal sister to Oneills Resolute.
- Birth weight 77 pounds.

32 Oneills Forever Eraline 30

Birth Date: 3-9-2007	Cow +15901232	Tattoo: 437	Tag: 1652 COW	CW			
#N Bar Emulation EXT	#Emulation N Bar 5522			+33			
GAR Exaltation 3144	N Bar Primrose 2424			MARB			
#+12304052 +GAR Scotch Cap 309	#Scotch Cap			+ .34			
	Rita 5H11 of 1B14 Rito 9J9			RE			
				+ .43			
	+Oneills Quality Lad			FAT			
Oneills Forever Eraline 4	#Blackcap Lady 3187 GDAR			+ .008			
+13345496 +SVF Forever Eraline	#Rito 054 GDAR			\$W			
	#Oneills Eraline 42			+32.35			
CED	BEPD	WEPD	YEPD	RADG	SC	MILK	\$B
+2 .27	+1.8 .34	+37 .28	+70 .25	+25 .18	+16 .29	+25 .30	+116.03

- An impressive donor cow with a progeny birth ratio of 97 balanced with a progeny weaning ratio of 101 on four calves and a progeny yearling ratio of 111 on one head.
- Her first calf sold to Taylor Farm of Kentucky and daughters have sold to Al Rosendahl of Iowa and to Ryan Nelson of Nebraska, who enjoyed success in the show ring with that heifer as a Reserve Grand Champion.
- A maternal sister produced Oneills Encore and Oneills Exposition, as well as Lots 33 and 34.
- Bred June 10, 2016 to ONEILLS JOCK and exposed to him.



ONEILLS JOCK 694 - This son of Lot 31 is a full brother to Lot 31A.



ONEILLS FOREVER ERALINE 86 - This daughter of Lot 32 is a full sister to Lots 32A and 32B.

32A Oneills Forever Eraline 94

Birth Date: 4-23-2016 Cow 18585654 Tattoo: 626 Tag: 1652 HEIFER
• Birth weight 60 pounds.

32B Oneills Forever Eraline 95

Birth Date: 4-23-2016	Cow 18585655	Tattoo: 636	Tag: 1652-2 HEIFER	CW			
+Oneills Renovation	#+Oneills Renovator			+30			
Oneills Jock	+Oneills Royal Lady 40			MARB			
16964416 Oneills Royal Lady 56	#Oneills Expedition			+ .15			
	+Oneills Royal Lady 39			RE			
				+ .50			
	#N Bar Emulation EXT			FAT			
Oneills Forever Eraline 30	+GAR Scotch Cap 309			- .019			
+15901232 +Oneills Forever Eraline 4	+Oneills Quality Lad			\$W			
	+SVF Forever Eraline			+33.01			
CED	BEPD	WEPD	YEPD	RADG	SC	MILK	\$B
+8 .05	+1.4 .05	+36 .05	+67 .05	+22 .05	+63 .05	+21 .05	+100.61

- Birth weight 52 pounds.
- A pair of twin sisters by Oneills Jock produced as natural calves from the donor, Oneills Forever Eraline 30.
- A maternal sister has been a popular show winner including being Reserve Grand Champion in Nebraska for Ryan Nelson.

32C Oneills Frontiersman 884

Birth Date: 9-27-2014	Bull +18209962	Tattoo: 884	Tag: 16521	CW			
#SAV Pioneer 7301	#SAV Final Answer 0035 [RDF]			+43			
Oneills Frontiersman	SAV Blackbird 5297			MARB			
17281878 +Oneills Royal Lady Elaine	#Oneills Expedition			+ .35			
	+Oneills Royal Lady 29			RE			
				+ .94			
	#N Bar Emulation EXT			FAT			
Oneills Forever Eraline 30	+GAR Scotch Cap 309			- .001			
+15901232 +Oneills Forever Eraline 4	+Oneills Quality Lad			\$W			
	+SVF Forever Eraline			+44.54			
CED	BEPD	WEPD	YEPD	RADG	SC	MILK	\$B
+1 .05	+2.9 .05	+52 .05	+95 .05	+28 .05	+25 .05	+24 .05	+133.18

- 205-867, RE-17.6, SC-40
- A tremendous two-year-old son of Oneills Frontiersman, produced in the embryo program from Oneills Forever Eraline 30.
- The donor dam of this bull balances a progeny birth ratio of 97 with a progeny weaning ratio of 101 on four calves and a progeny yearling ratio of 111 on one head.



ONEILLS FRONTIERSMAN 884 - Lot 32C

ONEILLS ERALINE FAMILY



ONEILLS FOREVER ERALINE 88 - Lot 33B

ONEILLS ENCORE - Full brother to Lots 33 and 34.

33 Oneills Forever Eraline 44 (NHF)

Birth Date: 1-29-2009 Cow +16506901 Tattoo: 449 Tag: 1671 COW

Circle A Adventure 0124 #SAF Focus of ER
+Acf Evergreen 8007
+Circle Oak Traveler 524
#+Oneills Delia 703

#Twin Valley Precision E161 (ROF) #GAR Precision 1680
+WCC Blackcap C9 (RDC)
+Oneills Quality Lad
+SVF Forever Eraline

CW	+40
MARB	+0.37
RE	+0.62
FAT	-0.066
\$W	+31.27
\$B	+132.41

CED	BEPD	WEPD	YEPD	RADG	SC	MILK	\$B							
+0	.32	+2.7	.37	+44	.30	+87	.29	+32	.28	+47	.35	+24	.31	+132.41

- The first of two full sisters to the Genex/CRI sire, Oneills Encore, who sold one-third interest for \$75,000 as the top-selling Lot 1 bull of the 2008 O'Neill Sale.
- This cow is also a full sister to the high-performance sire, Oneills Exposition, who sold semen for international export, and Oneills Enterprise who was the \$11,000 top-selling bull over all breeds at the 2009 Iowa Beef Expo.
- This cow combines a progeny birth ratio of 95 with a progeny weaning ratio of 101 on four natural calves.
- Bred May 23, 2016 to ONEILLS BLACK BARDOLIER. Exposed to ONEILLS JOCK after June 15, 2016.

33A Oneills Frontiersman 216

Birth Date: 2-25-2016 Bull 18585626 Tattoo: 216 Tag: 1671 BULL CALF

#SAV Pioneer 7301 #SAV Final Answer 0035 (ROF)
SAV Blackbird 5297
#Oneills Expedition
+Oneills Royal Lady 29

Circle A Adventure 0124
Oneills Delia 715
#Twin Valley Precision E161 (ROF)
+Oneills Forever Eraline 4

CW	I+44
MARB	I+ .37
RE	I+ .87
FAT	I- .032
\$W	+42.19
\$B	+135.38

CED	BEPD	WEPD	YEPD	RADG	SC	MILK	\$B							
I-1	.05	I+3.4	.05	I+55	.05	I+104	.05	I+31	.05	I+41	.05	I+23	.05	+135.38

- The result of mating Oneills Frontiersman with a full sister to Oneills Encore, Oneills Exposition and Oneills Enterprise.
- The dam has a progeny birth ratio of 95 combined with a progeny weaning ratio of 101 on four natural calves and a progeny IMF ratio of 120 on three head.
- Birth weight 80 pounds.

33B Oneills Forever Eraline 88

Birth Date: 9-7-2015 Cow +18566109 Tattoo: 705 Tag: 1671A HEIFER

CED	BEPD	WEPD	YEPD	RADG	SC	MILK							
-5	.33	+3.8	.36	+42	.29	+82	.32	+30	.32	+38	.40	+17	.22
CW	MARB	RE	FAT	\$W	\$B								
+38	+0.38	+1.25	-0.075	+17.16	+137.54								

- Birth weight 79 pounds.

33C Oneills Forever Eraline 89

Birth Date: 9-9-2015 Cow +18566617 Tattoo: 565 Tag: 1671C HEIFER

#Gardens Highmark #Summitcrest Scotch Cap 0B45
Rito 9Q13 of Rita 5F56 GHM Green Garden Pride 6128 S1
+16408438 +Rita 5F56 of 1198 FD #CA Future Direction 5321
+Rita 1198 of 2536 Rito 616

#Oneills Expedition Circle A Adventure 0124
Oneills Forever Eraline 44 Oneills Delia 715
+16506901 +Oneills Forever Eraline 18 #Twin Valley Precision E161 (ROF)
+Oneills Forever Eraline 4

CW	I+48
MARB	I+ .57
RE	I+1.23
FAT	I- .044
\$W	+30.77
\$B	+158.35

CED	BEPD	WEPD	YEPD	RADG	SC	MILK	\$B							
I-1	.05	I+3.2	.05	I+50	.05	I+98	.05	I+33	.05	I+92	.05	I+20	.05	+158.35

- Birth weight 70 pounds.
- The donor dam has a progeny birth ratio of 95 balanced with a progeny weaning ratio of 101 on four natural calves and a progeny IMF ratio of 120 on three head, and she is a full sister to Oneills Encore, Oneills Exposition and Oneills Enterprise.



38 ONEILLS FOREVER ERALINE 18 - The dam of Lots 33 and 34.

ONEILLS ERA LINE FAMILY



ONEILLS RITO 9Q13 715 - Lot 33D



ONEILLS EXPOSITION
- Full brother to Lots 33
and 34.

33D Oneills Rito 9Q13 715

Birth Date: 9-9-2015	Bull +18566538	Tattoo: 715	Tag: 1671B BULL	CW
#Gardens Highmark	#Summitcrest Scotch Cap OB45			I+48
Rito 9Q13 of Rita 5F56 GHM	Green Garden Pride 6128 S1			MARB
+16408438 +Rita 5F56 of 1198 FD	#CA Future Direction 5321			I+.57
	+Rita 1198 of 2536 Rito 616			RE
				I+1.23
				FAT
#Oneills Expedition	Circle A Adventure 0124			I-.044
Oneills Forever Eraline 44	Oneills Delia 715			\$W
+16506901 +Oneills Forever Eraline 18	#Twin Valley Precision E161 (ROF)			+30.77
	+Oneills Forever Eraline 4			\$B
				+158.35

- A tremendous fall yearling herd sire prospect produced in the embryo program, by the outcross carcass sire, Rito 9Q13 of Rita 5F56 GHM, backed by generations of proven performance genetics, from the herd sire producing Eraline family.
- The dam of this bull is a full sister to the \$75,000 Genex/CRI sire, Oneills Encore, the high-performance international AI sire Oneills Exposition and the Iowa Beef Expo top-selling bull over all breeds Oneills Enterprise.
- The donor dam records a progeny birth ratio of 95 combined with a progeny weaning ratio of 101 on four natural calves and a progeny IMF ratio of 120 on three head.
- Birth weight 88 pounds.



ONEILLS FOREVER ERA LINE 90 - Lot 34B

34 Oneills Forever Eraline 46 (NHF)

Birth Date: 11-12-2010	Cow 16917356	Tattoo: 940	Tag: 168 COW	CW
Circle A Adventure 0124	#SAF Focus of ER			+44
Oneills Expedition	+Acf Evergreen 8007			MARB
#14761330 Oneills Delia 715	+Circle Oak Traveler 524			+32
	+Oneills Delia 703			RE
				+.77
				FAT
#Twin Valley Precision E161 (ROF)	#GAR Precision 1680			-.091
Oneills Forever Eraline 18	+WCC Blackcap C9 (ROF)			\$W
+15251875 +Oneills Forever Eraline 4	+Oneills Quality Lad			+27.15
	+SVF Forever Eraline			\$B
				+140.05

- This cow records progeny weaning and yearling ratios of 109 and 114, respectively, combined with a progeny ribeye ratio of 110 on one head, and she is a full sister to the donor featured as Lot 33.
- A full brother, Oneills Encore, is the Genex/CRI sire who sold one-third interest for \$75,000 as the top-selling Lot 1 bull of the 2008 O'Neill Sale and other full brothers include Oneills Exposition who sold semen for international export, as well as Oneills Enterprise who was the \$11,000 top-selling bull over all breeds at the 2009 Iowa Beef Expo.
- The donor dam has progeny weaning and yearling ratios of 107 and 105, respectively, on five natural calves combined with progeny IMF and ribeye ratios of 104 and 107, respectively, on seven head.
- Will sell with a calf at side (Lot 34A) or close to calving by ONEILLS JOCK.

34B Oneills Forever Eraline 90

Birth Date: 9-1-2015	Cow 18564914	Tattoo: 695	Tag: 1681 HEIFER	CW
+Oneills Renovation	#+Oneills Renovator			I+36
Oneills Jock	+Oneills Royal Lady 40			MARB
16964416 Oneills Royal Lady 56	#Oneills Expedition			I+.14
	+Oneills Royal Lady 39			RE
				I+.67
				FAT
#Oneills Expedition	Circle A Adventure 0124			I-.068
Oneills Forever Eraline 46	Oneills Delia 715			\$W
16917356 +Oneills Forever Eraline 18	#Twin Valley Precision E161 (ROF)			+33.09
	+Oneills Forever Eraline 4			\$B
				+106.03

- An impressive blending of the Eraline and Royal Lady families, sired by Oneills Jock.
- The dam of this heifer records progeny weaning and yearling ratios of 109 and 114, respectively, combined with a progeny ribeye ratio of 110 on one head, and she is a full sister to the Genex/CRI sire, Oneills Encore, who sold one-third interest for \$75,000 as the top-selling Lot 1 bull of the 2008 O'Neill Sale.
- Other full brothers to the dam of this heifer include Oneills Exposition and Oneills Enterprise.
- Birth weight 75 pounds.

ONEILLS ERALINE FAMILY



ONEILLS FOREVER ERALINE 92 - Lot 35A



ONEILLS FOREVER ERALINE 21 - Dam of Lot 35.

35 Oneills Forever Eraline 62

Birth Date: 3-8-2012	Cow +17315320	Tattoo: 722	Tag: 1714 COW
Circle A Adventure 0124	#SAF Focus of ER		
ONeills Expedition	+Acf Evergreen 8007		
#14761330 ONeills Delia 715	+Circle Oak Traveler 524		
	+ONeills Delia 703		
	+ONeills Stockman 587		
ONeills Prime Force	ONeills Eraline 221		
ONeills Forever Eraline 21	+ONeills Quality Lad		
+15259216 +ONeills Forever Eraline 4	+SVF Forever Eraline		

CW	+24
MARB	+ .63
RE	+ .20
FAT	- .083
\$W	+29.23
\$B	+110.07

CED	BEPD	WEPD	YEPD	RADG	SC	MILK	\$B
-6	.25	+3.7	.32	+45	.27	+84	.24
				+30	.05	+39	.05
						+24	.27

- The first of two full sisters to Oneills Envious Lad, the second highest ribeye bull of the 2010 O'Neill calf crop, from the mating of the high-performance and high feed-efficiency Pathfinder Sire, Oneills Expedition, with Oneills Forever Eraline 21 who balances a progeny birth ratio of 98 with a progeny weaning ratio of 104 on six natural calves and a progeny IMF ratio of 115 on 14 head.
- This cow recorded an individual IMF ratio of 136 and has a progeny weaning ratio of 104 on two calves.
- Bred May 9, 2016 to ONEILLS FRONTIERSMAN and exposed to him.



ONEILLS FOREVER ERALINE 62 - Lot 35

35A Oneills Forever Eraline 92

Birth Date: 3-1-2016	Cow 18566114	Tattoo: 236	Tag: 1714 HEIFER
#SAV Pioneer 7301	#SAV Final Answer 0035 [RF]		
ONeills Frontiersman	SAV Blackbird 5297		
17281878 +ONeills Royal Lady Elaine	#ONeills Expedition		
	+ONeills Royal Lady 29		
	Circle A Adventure 0124		
#ONeills Expedition	ONeills Delia 715		
ONeills Forever Eraline 62	ONeills Prime Force		
+17315320 +ONeills Forever Eraline 21	+ONeills Forever Eraline 4		

CW	+36
MARB	+ .50
RE	+ .66
FAT	- .040
\$W	+37.70
\$B	+123.67

CED	BEPD	WEPD	YEPD	RADG	SC	MILK	\$B
-14	.05	+3.9	.05	+56	.05	+102	.05
				N/A	N/A	N/A	N/A
						+23	.05

- A sensational March heifer by the \$100,000 valued Oneills Frontiersman, produced from a full sister to Oneills Envious Lad.
- This heifer is double-bred to the Pathfinder Sire, Oneills Expedition, from a dam with a progeny weaning ratio of 104 on two calves.
- The grandam records a progeny weaning ratio of 98, combined with a progeny weaning ratio of 104 on six natural calves and a progeny IMF ratio of 115 on 14 head.
- Birth weight 75 pounds.

35B Oneills Delta 425

Birth Date: 4-7-2015	Bull 18433335	Tattoo: 425	Tag: 1714 BULL
#Happyvale Blackcap G 72E	Happyvale Grand Blackcap 30X		
ONeills 72E Delta	Happyvale Bar Neonla 7T		
+16990441 ONeills Delia 732	ONeills Prime Force		
	+ONeills Delia 725		
	Circle A Adventure 0124		
#ONeills Expedition	ONeills Delia 715		
ONeills Forever Eraline 62	ONeills Prime Force		
+17315320 +ONeills Forever Eraline 21	+ONeills Forever Eraline 4		

CW	+116
MARB	+ .47
RE	+ .16
FAT	- .045
\$W	+3.74
\$B	+73.63

CED	BEPD	WEPD	YEPD	RADG	SC	MILK	\$B
-11	.21	+6.4	.31	+35	.22	+65	.15
				N/A	N/A	N/A	N/A
						+15	.12

- A herd sire prospect tracing numerous times to the O'Neill foundation Pathfinder Sire, Happyvale Blackcap G 72E, by the O'Neill senior herd sire, Oneills 72E Delta.
- The dam of this bull recorded an individual IMF ratio of 136 and has a progeny weaning ratio of 104 on two calves and she is a full sister to Oneills Envious Lad.
- Birth weight 88 pounds.

ONEILLS ERALINE FAMILY



ONEILLS FOREVER ERALINE 43 - Lot 38

ONEILLS ENVIOUS LAD - Full brother to Lots 35 and 36.

36 Oneills Forever Eraline 63

36	Birth Date: 3-8-2012	Cow +17315321	Tattoo: 732	Tag: 92-00 COW
	Circle A Adventure 0124	#SAF Focus of ER		
	Oneills Expedition	+Acf Evergreen 8007		
	#14761330 Oneills Delia 715	+Circle Oak Traveler 524		
		+Oneills Delia 703		
	Oneills Prime Force	+Oneills Stockman 587		
	Oneills Forever Eraline 21	Oneills Eraline 221		
	+15259216 +Oneills Forever Eraline 4	+Oneills Quality Lad		
		+SVF Forever Eraline		

CW	+22
MARB	+ .59
RE	
FAT	+ .26
\$W	- .086
\$B	+29.93

- A flush sister to Lot 35 and a full sister to Oneills Envious Lad owned by Terry Little of Missouri, Steve Sarmiento of California and Goode Brothers of Kansas.
- Other full brothers sold to John Fagan of Iowa and Josh Shekel of Iowa.
- This cow has an individual IMF ratio of 113 and records a progeny weaning ratio of 113 on one calf from a high-marbling dam who records a progeny birth ratio of 98 combined with a progeny weaning ratio of 104 on six natural calves and a progeny IMF ratio of 115 on 14 head.
- Bred May 20, 2016 to ONEILLS BLACK BARDOLIER. Exposed to ONEILLS GERONIMO and ONEILLS FRONTIERSMAN.

36A Oneills Absolute 566

36A	Birth Date: 4-3-2016	Bull 18585650	Tattoo: 566	Tag 92-00 BULL
	#SAV Pioneer 7301	#SAV Final Answer 0035 <small>(RF)</small>		
	Oneills Absolute	SAV Blackbird 5297		
	+17876887 Oneills Eraline 234	#Oneills Expedition		
		+Oneills Eraline 231		
	#Oneills Expedition	Circle A Adventure 0124		
	Oneills Forever Eraline 63	Oneills Delia 715		
	+17315321 +Oneills Forever Eraline 21	Oneills Prime Force		
		+Oneills Forever Eraline 4		

CW	+24
MARB	+ .50
RE	
FAT	+ .34
\$W	- .022
\$B	+36.39

CED	BEPD	WEPD	YEPD	RADG	SC	MILK	\$B					
1-1	.05	1+3.1	.05	1+48	.05	N/A	N/A	N/A	N/A	1+25	.05	+94.58

- This April prospect by Oneills Absolute features a linebred O'Neill pedigree tracing twice to the Pathfinder Sire, Oneills Expedition, from a dam who is a full sister to Oneills Envious Lad.
- The dam has an individual IMF ratio of 113 and a progeny weaning ratio of 113 on one calf.
- Birth weight 70 pounds.

38 Oneills Forever Eraline 43

38	Birth Date: 1-29-2010	Cow +16701459	Tattoo: 530	Tag: 1679 COW
	#Traveler 124 GDAR	#QAS Traveler 23-4		
	Circle Oak Traveler 524	Rachel Rito 813 GDAR		
	+12406912 VDAR Beauty 228	#Rito 2100 GDAR		
		#VDAR Beauty 930		
	#VDAR Rito 953	#Rito 2100 GDAR		
	Oneills Forever Eraline	Miss Wix 903 of Mc Cumber		
	+12841113 +SVF Forever Eraline	#Rito 054 GDAR		
		#Oneills Eraline 42		

CW	+0
MARB	+ .06
RE	
FAT	+0
\$W	+ .033
\$B	+15.97

- A massive and impressive descendant of the legendary Pathfinder Dam, Oneills Eraline 42, by the O'Neill foundation sire, Circle Oak Traveler 524.
- The donor dam of this cow is a third-generation O'Neill donor backed by the Pathfinder Sires, VDAR Rito 953 and Rito 054 GDAR.
- Sells with a bull calf at side (Lot 38A) calved September 29, 2016 by ONEILLS GERONIMO. Tattoo 766. Tag 1679 Bull Calf. Birth weight 80 pounds.

38B Oneills Jock 865

38B	Birth Date: 11-8-2015	Bull 18564924	Tattoo: 865	Tag: 1679 BULL
	+Oneills Renovation	#+Oneills Renovator		
	Oneills Jock	+Oneills Royal Lady 40		
	16964416 Oneills Royal Lady 56	#Oneills Expedition		
		+Oneills Royal Lady 39		
	+Circle Oak Traveler 524	#Traveler 124 GDAR		
	Oneills Forever Eraline 43	VDAR Beauty 228		
	+16701459 +Oneills Forever Eraline	#VDAR Rito 953		
		+SVF Forever Eraline		

CW	+14
MARB	+ .01
RE	
FAT	1+ .29
\$W	- .006
\$B	+23.11

CED	BEPD	WEPD	YEPD	RADG	SC	MILK	\$B							
1+11	.05	1+1.1	.05	1+28	.05	1+51	.05	N/A	N/A	N/A	N/A	1+18	.05	+44.01

- This fall yearling bull is from the herd sire producing Eraline family and by the O'Neill featured herd sire, Oneills Jock.
- The massive dam of this bull is by the O'Neill foundation sire, Circle Oak Traveler 524, stemming from the Pathfinder Sires, VDAR Rito 953 and Rito 054 GDAR.
- Birth weight 82 pounds.

ONEILLS ERALINE FAMILY



ONEILLS ERALINE 306 - Lot 39A



HAPPYVALE BLACKCAP G 72E - The Pathfinder Sire of Lot 39.

39 Oneills Eraline 273

Birth Date: 3-1-2011	Cow +17007813	Tattoo: 671	Tag: 1683 COW
Happyvale Grand Blackcap 30X	Happyvale Blackcap 67M		
Happyvale Blackcap G 72E	Happyvale Grand Violet 30T		
#8191993	Happyvale Bar Neonia 7T	Eston Blackcap of RB4	
		Bar Blackcap Neonia 3	
	#Oneills Duke	+R&J Milky Way 1406	
Oneills Eraline 220		Oneills Delia 465	
13194600	Oneills Eraline 95	#+Gunston Tall Texan	
		Oneills Eraline 12	

CW	+14
MARB	+ .09
RE	+ .12
FAT	- .037
\$W	-14.41

CED	BEPD	WEPD	YEPD	RADG	SC	MILK	\$B
+6 .22	+1.3 .28	+15 .24	+23 .22	+1.11 .05	+1.20 .05	+0 .25	+68.61

39A Oneills Eraline 306

Birth Date: 2-13-2016	Cow 18566112	Tattoo: 146	Tag: 1683 HEIFER
Oneills Frontiersman	#SAV Pioneer 7301		
Oneills Geronimo	+Oneills Royal Lady Elaine		
17926576	+Oneills Delia 731	#+Rito 112 of 2536 Rito 616	
		#+Oneills Delia 703	
	#Happyvale Blackcap G 72E	Happyvale Grand Blackcap 30X	
Oneills Eraline 273		Happyvale Bar Neonia 7T	
+17007813	Oneills Eraline 220	#Oneills Duke	
		Oneills Eraline 95	

CW	+26
MARB	+ .29
RE	+ .41
FAT	- .026
\$W	+20.81

CED	BEPD	WEPD	YEPD	RADG	SC	MILK	\$B
+5 .05	+1.7 .05	+36 .05	+60 .05	N/A	N/A	+12 .05	+86.56

- A direct daughter of the O'Neill foundation Pathfinder Sire known as the roughage converter.
- A full sister to this cow sold for \$6,500 to Maifeld Inc. and they were produced from a dam by the Pathfinder Sire, Oneills Duke, used with great success in the O'Neill and New Haven programs.
- The maternal grandam is a maternal sister to the Pathfinder Dam, Oneills Eraline 42.
- Bred May 31, 2016 to ONEILLS GERONIMO. Exposed to ONEILLS FRONTIERSMAN after June 16, 2016.

- A tremendous prospect from the Eraline family with the unique blending of both modern day and old time O'Neill breeding.
- This heifer is sired by Oneills Geronimo, from a dam by the O'Neill foundation Pathfinder Sire, Happyvale Blackcap G 72E, from the same branch of the Eraline family that produced the Pathfinder Dam, Oneills Eraline 42.
- Birth weight 81 pounds.



ONEILLS ERALINE 262 - Full sister to Lot 39.



ONEILLS ERALINE 302 - Daughter of Lot 39.

ONEILLS ERALINE FAMILY



SOUTHOLM MARSHALL 023V - Paternal grandsire of Lot 40.



FATHER OF WYE - The sire of Lot 41.



GEES ERALINE 128 - The dam of Lots 40 and 41.

40 Oneills Eraline 271

Birth Date: 2-24-2011	Cow +17090901	Tattoo: 551	Tag: 1688 COW	CW
Southolm Marshall 023V	FV Marshall A11			+7
Diamond Horseshoe Marshall 18	Blackbird of Aljon 19J			MARB
7674560	Park Lake Eileenmere 27			+0.07
	Lady Barbara of Diamond City			RE
				+0.11
				FAT
				+0.019
				\$W
				-11.62
				\$B
				+42.88

- A rare genetic gem by the legendary O'Neill foundation sire, Diamond Horseshoe Marshall 18, known as Black Diamond and lived to 18 years of age.
- This impressive cow has a progeny weaning ratio of 104 on two calves, from a donor dam with eight natural calves on record in the AHIR program.
- A daughter, Oneills Eraline 296, sold to Maifeld Inc.
- Bred May 13, 2016 to ONEILLS BLACK BARDOLIER. Exposed to ONEILLS JOCK after June 1, 2016.

40A Oneills Expedition 176

Birth Date: 2-22-2016	Bull 18585631	Tattoo: 176	Tag 1688 BULL	CW
Circle A Adventure 0124	#SAF Focus of ER			1+27
Oneills Expedition	+Acf Evergreen 8007			MARB
#14761330	+Circle Oak Traveler 524			1+.31
	#+Oneills Delia 703			RE
				1+.42
				FAT
				1-.050
				\$W
				+6.34
				\$B
				+99.76

- A full brother to Oneills Eraline 296 who sold to Maifeld Inc.
- This uniquely-bred herd sire prospect is by the proven high-performance and high feed-efficiency Pathfinder Sire, Oneills Expedition, from a dam by the Canadian-bred O'Neill foundation herd sire known as Black Diamond.
- The dam of this bull has a progeny weaning ratio of 104 on two natural calves.
- Birth weight 75 pounds.

41 Oneills Eraline 263

Birth Date: 5-26-2010	Cow 17584248	Tattoo: 370	Tag: 1678 COW	CW
#Conan of Wye	Francis of Wye			-22
Father of Wye	Clarice of Wye			MARB
5221331	Prince of Malpas			+0.03
	Fauna of Wye			RE
				-0.15
				FAT
				+0.037
				\$W
				-12.53
				\$B
				-22.93

- A unique dimension of the Eraline family by the time-honored Father of Wye who was born in 1965.
- The dam of this cow has served as a foundation donor and she is by the O'Neill foundation Pathfinder Sire, Prospect Genetic Engineer 64N, a twice National Western first-prize winner.
- A maternal sister sells as Lot 40.
- Bred May 22, 2016 to ONEILLS BLACK BARDOLIER. Exposed to ONEILLS FRONTIERSMAN after June 16, 2016.

41A Oneills Eraline 307

Birth Date: 3-1-2016	Cow 18585632	Tattoo: 226	Tag: 1678 HEIFER	CW
Circle A Adventure 0124	#SAF Focus of ER			1+13
Oneills Expedition	+Acf Evergreen 8007			MARB
#14761330	+Circle Oak Traveler 524			1+.29
	#+Oneills Delia 703			RE
				1+.29
				FAT
				1-.041
				\$W
				+7.34
				\$B
				+60.12

- A three-quarter sister to Lot 40A, sired by Oneills Expedition, stemming from the proven donor, Gees Eraline 128.
- The dam of this impressive heifer is by the time-honored Father of Wye.
- Birth weight 70 pounds.



ONEILLS ERALINE 296 - This daughter of Lot 40 is a full sister to Lot 40A.



ONEILLS ERALINE 307 - Lot 41A

ONEILLS BLACKCAP LADY FAMILY



ONEILLS LADY BLACKCAP 65 - Lot 42



ONEILLS PRIME STAR 354 - Son of Lot 42.

42 **Oneills Lady Blackcap 65**

Birth Date: 2-27-2010 Cow +16717544 Tattoo: 800 Tag: 1675 COW

Circle A Adventure 0124 #SAF Focus of ER
+Acf Evergreen 8007
+Circle Oak Traveler 524
#+Oneills Delia 703

#TC Stockman 365 #TC Stockman
TC Pride 0014
#+Oneills Renovator
#Blackcap Lady 3187 GDAR

CW	+46
MARB	+ .52
RE	+ .58
FAT	- .116
\$W	+35.09
\$B	+149.35

CED	BEPD	WEPD	YEPD	RADG	SC	MILK	\$B
-1 .29	+3.4 .34	+48 .29	+84 .27	+31 .22	+33 .29	+24 .30	+149.35

42A **Oneills Frontiersman 336**

Birth Date: 3-6-2016 Bull 18585627 Tattoo: 336 Tag: 1675 BULL

#SAV Pioneer 7301 #SAV Final Answer 0035 [PROF]
SAV Blackbird 5297
#Oneills Expedition
+Oneills Royal Lady 29

#Oneills Expedition Circle A Adventure 0124
Oneills Delia 715
#TC Stockman 365
+Oneills Lady Blackcap

CW	I+47
MARB	I+.45
RE	I+.85
FAT	I-.057
\$W	+44.38
\$B	+143.91

CED	BEPD	WEPD	YEPD	RADG	SC	MILK	\$B
I-1 .05	I+3.7 .05	I+57 .05	I+102 .05	I+.31 .05	I+.34 .05	I+23 .05	+143.91

- The dam of Oneills Prime Star 354 who sold for \$10,000 to Johnson Angus Ranch of North Dakota.
- This productive daughter of the Pathfinder Sire, Oneills Expedition, has a progeny weaning ratio of 108 combined with progeny IMF and ribeye ratios of 107 and 105, respectively, on two calves, from a highly proven donor dam with ten natural calves on record in the AHIR program, along with 43 head evaluated by ultrasound and 15 daughters in production.
- The grandam is a full sister to the Iowa State Fair Reserve Grand Champion Bull, Oneills Quality Lad, stemming from the O'Neill foundation Pathfinder Dam, Blackcap Lady 3187 GDAR.
- Bred May 30, 2016 to ONEILLS GERONIMO.

- A maternal brother to the \$10,000 Oneills Prime Star 354, from a dam who records a progeny weaning ratio of 108 combined with progeny IMF and ribeye ratios of 107 and 105, respectively, on two head.
- This son of Oneills Frontiersman is double-bred to the Pathfinder Sire, Oneills Expedition, from the herd sire producing family that produced the Iowa State Fair Reserve Grand Champion Bull, Oneills Quality Lad.
- Birth weight 88 pounds.



ONEILLS FRONTIERSMAN 246 - Lot 43

43 **Oneills Frontiersman 246**

Birth Date: 2-28-2016 Bull 18566116 Tattoo: 246 Tag: 1707 BULL

#SAV Pioneer 7301 #SAV Final Answer 0035 [PROF]
SAV Blackbird 5297
#Oneills Expedition
+Oneills Royal Lady 29

#+Rito 112 of 2536 Rito 616 #Rito 616 of 4B20 6807
GAR Precision 2536
#TC Stockman 365
+Oneills Lady Blackcap

CW	I+39
MARB	I+.47
RE	I+.55
FAT	I-.033
\$W	+43.64
\$B	+124.56

CED	BEPD	WEPD	YEPD	RADG	SC	MILK	\$B
I+3 .05	I+2.6 .05	I+56 .05	I+98 .05	N/A N/A	I+.27 .05	I+23 .05	+124.56

- A leading herd sire candidate of the 2016 O'Neill calf crop, by the \$100,000 valued Oneills Frontiersman.
- The dam of this bull has progeny weaning and yearling ratios of 106 and a progeny ribeye ratio of 106 on one natural calf and she is a flush sister to Lot 44, stemming from the prolific Oneills Lady Blackcap 25.
- The third dam is a full sister to Oneills Quality Lad.

ONEILLS BLACKCAP LADY FAMILY



ONEILLS LADY BLACKCAP 74 - Lot 44

Oneills Lady Blackcap 74

44	Birth Date: 3-2-2012	Cow +17343845	Tattoo: 622	Tag: 62-00	CW
					+31
	#Rito 616 of 4B20 6807	#DHD Traveler 6807			MARB
	#Rita 4B20 of OFB1 Bando	#GAR Precision 1680			+ .51
	#GAR Precision 2536	+GAR Ext 2104			RE
					+ .18
	#TC Stockman 365	#TC Stockman			FAT
	Oneills Lady Blackcap 25	TC Pride 0014			- .038
	+13019081 +Oneills Lady Blackcap	#+Oneills Renovator			\$W
		#Blackcap Lady 3187 GDAR			+45.68

CED	BEPD	WEPD	YEPD	RADG	SC	MILK	\$B
+5 .29	+1.5 .32	+47 .27	+76 .26	+26 .05	+08 .05	+25 .28	+120.10

- A product of the embryo program with a progeny birth ratio of 96 combined with a progeny weaning ratio of 113 on one natural calf.
- This maternal sister to Lot 42 is from a prolific donor dam who balances a progeny birth ratio of 98 with a progeny weaning ratio of 100 on ten natural calves with 43 head evaluated by ultrasound, stemming from the O'Neill foundation Pathfinder Dam, Blackcap Lady 3187 GDAR, the \$10,500 top-selling cow of a past O'Neill sale to Circle A Ranch of Missouri.
- Exposed to ONEILLS 9Q13 OF 720 and ONEILLS PRIME STAR 80 after August 11, 2016.



ONEILLS LADY BLACKCAP 6200 - Lot 45

Oneills Lady Blackcap 6200

45	Birth Date: 2-28-2014	Cow 17816939	Tattoo: 6200	Tag: 64-02 COW	CW
					I-26
	#DHD Traveler 6807	#QAS Traveler 23-4			MARB
	Oneills Legacy	#Bemindful Maid DHD 0807			I- .48
	+16722180 Oneills Eraline 234	#ONEills Expedition			RE
		+ONEills Eraline 231			I- .18
	#+Rito 112 of 2536 Rito 616	Rito 616 of 4B20 6807			FAT
	Oneills Lady Blackcap 74	GAR Precision 2536			I- .053
	+17343845 +Oneills Lady Blackcap 25	#TC Stockman 365			\$W
		+Oneills Lady Blackcap			+43.75

CED	BEPD	WEPD	YEPD	RADG	SC	MILK	\$B
+4 .26	+1.8 .32	+50 .23	+84 .15	N/A	N/A	N/A	+23 .13

- A two-year-old daughter of Oneills Legacy who transmits excellent udders with fleshing ability and structural soundness.
- This female combines an individual birth ratio of 96 with an individual weaning ratio of 113, from a dam who sells as Lot 44.
- Exposed to multiple sires.

45A Oneills Lady Blackcap 84

45A	Birth Date: 4-3-2016	Cow Reg.No.Pdg.	Tattoo: 576	Tag: 64-02 COW	CW
					I-28
	#SAV Pioneer 7301	#SAV Final Answer 0035 [RDF]			MARB
	Oneills Resolute	SAV Blackbird 5297			I- .46
	17866927 +Oneills Forever Eraline 38	#ONEills Expedition			RE
		+ONEills Forever Eraline 15			I- .30
	+Oneills Legacy	#DHD Traveler 6807			FAT
	Oneills Lady Blackcap 6200	ONEills Eraline 234			I- .002
	17816939 +Oneills Lady Blackcap 74	#+Rito 112 of 2536 Rito 616			\$W
		+Oneills Lady Blackcap 25			+43.11

CED	BEPD	WEPD	YEPD	RADG	SC	MILK
+9 .38	-2 .43	+45 .32	+83 .36	+22 .38	+1.02 .40	+18 .24
+4 .26	+1.8 .32	+50 .23	+84 .15	N/A	N/A	+23 .13

CW	MARB	RE	FAT	\$W	\$B
+28	+ .27	+ .70	+ .053	+40.29	+90.64
I-26	I- .48	I- .18	I- .053	+43.75	+97.29

- This April heifer by Oneills Resolute was produced as the first calf from a two-year-old dam by Oneills Legacy.
- The grandam sells as Lot 44, carrying forward a successful cow family stemming from generations of O'Neill donors that trace to the O'Neill foundation Pathfinder Dam, Blackcap Lady 3187 GDAR.
- Birth weight 74 pounds.



ONEILLS LADY BLACKCAP 30 - Full sister to the dam of Lots 42 and 44.

44A Oneills Absolute 616

44A	Birth Date: 4-21-2016	Bull 18585653	Tattoo: 616	Tag: 62-00 BULL	CW
					I-28
	#SAV Pioneer 7301	#SAV Final Answer 0035 [RDF]			MARB
	Oneills Absolute	SAV Blackbird 5297			I- .46
	+17876887 Oneills Eraline 234	#ONEills Expedition			RE
		+ONEills Eraline 231			I- .30
	#+Rito 112 of 2536 Rito 616	Rito 616 of 4B20 6807			FAT
	Oneills Lady Blackcap 74	GAR Precision 2536			I- .002
	+17343845 +Oneills Lady Blackcap 25	#TC Stockman 365			\$W
		+Oneills Lady Blackcap			+43.11

CED	BEPD	WEPD	YEPD	RADG	SC	MILK	\$B
I-5 .05	I-2.1 .05	I-49 .05	I-84 .05	N/A	N/A	I-25 .05	+96.58

- A late April herd sire prospect by Oneills Absolute, from the cow family that produced the Iowa State Fair Reserve Grand Champion Bull, Oneills Quality Lad, along with numerous other successful individuals.
- The dam of this bull has a progeny birth ratio of 96 combined with a progeny weaning ratio of 113 on one natural calf and the grandam is a prolific donor.
- Birth weight 69 pounds.

44B Oneills Lady Blackcap Embryos

44B	Six Frozen Embryos				
	#Rito 616 of 4B20 6807	#DHD Traveler 6807			
	Rito 112 of 2536 Rito 616	+Rita 4B20 of OFB1 Bando			
	#+13793826 GAR Precision 2536	#GAR Precision 1680			
		+GAR Ext 2104			
	#TC Stockman 365	#TC Stockman			
	Oneills Lady Blackcap 25	TC Pride 0014			
	+13019081 +Oneills Lady Blackcap	#+Oneills Renovator			
		#Blackcap Lady 3187 GDAR			

CED	BEPD	WEPD	YEPD	RADG	SC	MILK
+1 .92	+1.8 .97	+58 .96	+98 .95	+28 .81	-22 .95	+23 .94
+9 .41	+1.1 .54	+31 .42	+50 .37	+23 .29	+38 .50	+21 .47

CW	MARB	RE	FAT	\$W	\$B
+41	+ .77	- .09	- .031	+53.08	+143.04
+22	+ .36	+ .28	- .068	+26.64	+98.99

- The same mating that produced the cow who sells as Lot 44.
- The prolific donor dam of these embryos is a full sister to Oneills Lady Blackcap 30 who was the 2000 Iowa Grand Champion Female and 2000 Nebraska State Fair Reserve Grand Champion where she sold one-half interest for \$10,000.

ONEILLS BLACKCAP LADY FAMILY



ONEILLS LADY BLACKCAP 70 - Lot 46



ONEILLS LADY BLACKCAP 41 - The dam of Lots 46 and 46B.

46

ONEILLS Lady Blackcap 70

Birth Date: 3-7-2011	Cow +17084801	Tattoo: 9Y	Tag: 1685 COW
Circle A Adventure 0124	#SAF Focus of ER		
ONEILLS Expedition	+Acf Evergreen 8007		
#14761330 ONEILLS Delia 715	+Circle Oak Traveler 524		
	#+ONEILLS Delia 703		
	#+Baldridge Notch AC		
ONEILLS Lady Blackcap 41	#Bon View Bando 598		
14761332 +ONEILLS Lady Blackcap 25	+SVF Blackbird 1620		
	#TC Stockman 365		
	+ONEILLS Lady Blackcap		

CW	+31
MARB	+ .45
RE	+ .36
FAT	- .100
\$W	+23.99
\$B	+118.19

- A blending of the Blackcap Lady and Delia families by the Pathfinder Sire, ONEILLS Expedition.
- This cow has a progeny weaning ratio of 101 on one calf along with a progeny IMF ratio of 114 on two head, and she is the product of an embryo program backed by generations of successful donors in the O'Neill program.
- A \$3,500 maternal brother sold one-third interest one month after purchase for \$12,500 for the new owner.
- Bred May 7, 2016 to ONEILLS BLACK BARDOLIER.



ONEILLS MARSHALL LAD 196 - Lot 46A

46A

ONEILLS Marshall Lad 196

Birth Date: 2-24-2016	Bull 18566115	Tattoo: 196	Tag: 1685 BULL
#Traveler 124 GDAR	#QAS Traveler 23-4		
ONEILLS Marshall Lad	Rachel Rito 813 GDAR		
+17362747 +ONEILLS Delia 720	Circle A Adventure 0124		
	ONEILLS Delia 715		
	#ONEILLS Expedition		
ONEILLS Lady Blackcap 70	Circle A Adventure 0124		
+17084801 ONEILLS Lady Blackcap 41	ONEILLS Delia 715		
	#+Baldridge Notch AC		
	+ONEILLS Lady Blackcap 25		

CW	1+27
MARB	1+.62
RE	1+.49
FAT	1-.066
\$W	+25.16
\$B	+113.66

- A son of ONEILLS Marshall Lad, the \$13,000 top-selling bull over all breeds at the Iowa Beef Expo.
- This bull is linebred through the full siblings, ONEILLS Expedition and ONEILLS Delia 720, from a dam who records a progeny weaning ratio of 101 combined with a progeny IMF ratio of 114.
- Birth weight 74 pounds.

46B

ONEILLS Lady Blackcap Embryos

Two Frozen Embryos

Circle A Adventure 0124	#SAF Focus of ER
ONEILLS Expedition	+Acf Evergreen 8007
#14761330 ONEILLS Delia 715	+Circle Oak Traveler 524
	#+ONEILLS Delia 703
	#+Baldridge Notch AC
ONEILLS Lady Blackcap 41	#Bon View Bando 598
14761332 +ONEILLS Lady Blackcap 25	+SVF Blackbird 1620
	#TC Stockman 365
	+ONEILLS Lady Blackcap

CED	BEPD	WEPD	YEPD	RADG	SC	MILK
-6 .69	+4.6 .87	+51 .82	+98 .72	+34 .43	+18 .74	+18 .72
+9 .32	+6 .44	+36 .34	+57 .31	+19 .17	+48 .32	+14 .34

CW	MARB	RE	FAT	\$W	\$B
+48	+ .55	+ .73	- .119	+22.59	+151.08
+21	+ .41	+ .06	- .061	+24.98	+93.65

- These embryos are full siblings to the outstanding cow who sells as Lot 46.
- These Blackcap Lady embryos are by the proven high-performance and high feed-efficiency Pathfinder Sire, ONEILLS Expedition, from a dam who is a fourth-generation O'Neill Blackcap Lady donor.

ONEILLS BLACKCAP LADY FAMILY

47 Oneills Lady Blackcap 52 ^[CAF]

Birth Date: 1-22-2008	Cow 16080508	Tattoo: 88	Tag: 1655 COW	CW			
Circle A Adventure 0124 #SAF Focus of ER				+41			
#SAF Evergreen 8007				MARB			
+Circle Oak Traveler 524				+ .65			
#+ONEills Delia 703				RE			
				+ .29			
#+SAF 598 Bando 5175 #Bon View Bando 598				FAT			
+SAF Royal Lass 1002				- .089			
#TC Stockman 365				\$W			
+Oneills Lady Blackcap				+24.34			
CED	BEPD	WEPD	YEPD	RADG	SC	MILK	\$B
+2 .31	+3.4 .43	+49 .33	+92 .29	+27 .05	+37 .23	+14 .31	+138.24

- A blending of the Blackcap Lady and Delia families by the Pathfinder Sire ONEills Expedition.
- This cow has a progeny IMF ratio of 118 on two head after recording an individual IMF ratio of 112 and individual weaning and yearling ratios of 109.
- A daughter sells as Lot 48.
- Sells with a bull calf at side (Lot 47A) calved May 28, 2016 by ONEILLS FRONTIERSMAN. Tattoo 696. Tag 1655 Bull Calf. Reg. 18585629. Birth weight 82 pounds.
- Exposed to ONEILLS JOCK after June 15, 2016.



ONEILLS LADY BLACKCAP 52 - Lot 47

49 Oneills Lady Blackcap 72

Birth Date: 2-5-2012	Cow 17289792	Tattoo: 202	Tag: 1708 COW	CW			
Circle A Adventure 0124 #SAF Focus of ER				+46			
#Acf Evergreen 8007				MARB			
+Circle Oak Traveler 524				+ .36			
#+ONEills Delia 703				RE			
				+ .62			
#Twin Valley Precision E161 ^[RF] #GAR Precision 1680				FAT			
+WCC Blackcap C9 ^[RD]				- .074			
#TC Stockman 365				\$W			
+ONEills Lady Blackcap				+35.49			
CED	BEPD	WEPD	YEPD	RADG	SC	MILK	\$B
+5 .31	+2.3 .40	+48 .30	+85 .25	+29 .22	+31 .26	+20 .27	+140.43

- A three-quarter sister to Lots 46 and 47, by the Pathfinder Sire ONEills Expedition, stemming from the prolific ONEills Lady Blackcap 25.
- This cow combines a progeny birth ratio of 96 with a progeny weaning ratio of 101 on two calves, from a dam who records a progeny birth ratio of 99 combined with a progeny weaning ratio of 105 on four calves.
- Bred May 11, 2016 to ONEILLS BLACK BARDOLIER.

49A Oneills Frontiersman 285 ^[OSF]

Birth Date: 3-1-2015	Bull 18254065	Tattoo: 285	Tag: 1708 BULL	CW			
#SAV Pioneer 7301 #SAV Final Answer 0035 ^[RF]				+51			
#SAV Blackbird 5297				MARB			
+ONEills Royal Lady Elaine				+ .39			
				RE			
#ONEills Expedition				+ .90			
+ONEills Royal Lady 29				FAT			
Circle A Adventure 0124				- .03			
ONEills Delia 715				\$W			
#Twin Valley Precision E161 ^[RF]				+48.72			
+ONEills Lady Blackcap 25							
CED	BEPD	WEPD	YEPD	RADG	SC	MILK	\$B
+5 .35	+2.9 .42	+58 .30	+103 .29	+30 .31	-14 .37	+21 .15	+144.67

- This coming two-year-old herd sire candidate is by the \$100,000 valued ONEills Frontiersman, with a pedigree tracing twice to the Pathfinder Sire, ONEills Expedition.
- This bull has an individual weaning ratio of 102 and an individual ribeye ratio of 107, from a dam who combines a progeny birth ratio of 96 with a progeny weaning ratio of 101 and a progeny ribeye ratio of 104 on two calves.
- BW-79, 205-820, IMF-5.75, RE-17.3

47B Oneills Jock 445

Birth Date: 4-13-2015	Bull 18433334	Tattoo: 445	Tag: 1655	CW			
+ONEills Renovation				+34			
#+ONEills Renovator				MARB			
+ONEills Royal Lady 40				+ .30			
#ONEills Expedition				RE			
+ONEills Royal Lady 39				+ .43			
Circle A Adventure 0124				FAT			
ONEills Delia 715				- .067			
#+SAF 598 Bando 5175				\$W			
+ONEills Lady Blackcap 25				+29.96			
CED	BEPD	WEPD	YEPD	RADG	SC	MILK	\$B
+8 .24	+6 .34	+43 .25	+78 .19	N/A N/A	+7.4 .05	+15 .12	+107.63

- A coming two-year-old calving-ease prospect sired by ONEills Jock.
- The low birth weight dam of this bull records a progeny IMF ratio of 118 on two head after earning an individual IMF ratio of 112 and individual weaning and yearling ratios of 108 and 109, respectively.
- A maternal sister sells as Lot 48.
- BW-72, 205-814

48 Oneills Lady Blackcap 71

Birth Date: 7-3-2011	Cow 17234738	Tattoo: 311	Tag: 1699 COW	CW			
#ONEills Expedition				+33			
Circle A Adventure 0124				MARB			
ONEills Delia 715				+ .41			
#Leachman Boom Time				RE			
+ONEills Royal Lady 10				+ .20			
Circle A Adventure 0124				FAT			
ONEills Delia 715				- .083			
#+SAF 598 Bando 5175				\$W			
+ONEills Lady Blackcap 25				+23.06			
CED	BEPD	WEPD	YEPD	RADG	SC	MILK	\$B
+2 .20	+2.1 .31	+45 .21	+85 .15	N/A N/A	+4.6 .05	+13 .17	+110.49

- A linebred double granddaughter of the high-performance and high feed-efficiency Pathfinder Sire, ONEills Expedition.
- This cow is sired by the \$11,000 ONEills Royal Edge K337, from a dam who records a progeny IMF ratio of 118 on two head and sells as Lot 47.
- Bred June 16, 2016 to ONEILLS JOCK and exposed to him.

48A Oneills Lady Blackcap 83

Birth Date: 3-5-2016	Cow 18585635	Tattoo: 326	Tag: 1699 HEIFER	CW			
+ONEills Renovation				N/A			
#+ONEills Renovator				MARB			
+ONEills Royal Lady 40				N/A			
#ONEills Expedition				RE			
+ONEills Royal Lady 39				N/A			
+ONEills Royal Edge K337				FAT			
#ONEills Expedition				N/A			
ONEills Royal Lady 38				\$W			
#ONEills Expedition				+27.49			
+ONEills Lady Blackcap K46							
CED	BEPD	WEPD	YEPD	RADG	SC	MILK	\$B
+8 .05	+1.3 .05	+40 .05	+74 .05	N/A N/A	N/A N/A	+15 .05	N/A

- This March heifer from the Blackcap Lady family is bred much like Lot 47B, stemming from a granddam who sells as Lot 47.
- The dam of this heifer has an individual birth ratio of 89 combined with an individual weaning ratio of 102.
- Birth weight 73 pounds.



ONEILLS JOCK 445 - Lot 47B



ONEILLS FRONTIERSMAN 285 - Lot 49A

ONEILLS RACHEL FAMILY



ONEILLS RACHEL 58 - Lot 50



ONEILLS LEADER - Maternal brother to Lots 50, 51A, 51B and 51C.

50

ONEILLS Rachel 58

Birth Date: 11-3-2012	Cow 17575924	Tattoo: 1152	Tag: 1717 COW	CW
#DHD Traveler 6807	#QAS Traveler 23-4			+38
ONEILLS Legacy	#Bemindful Maid DHD 0807			MARB
+16722180 ONEILLS Eraline 234	#ONEILLS Expedition			+ .18
	+ONEILLS Eraline 231			RE
	#Papa Equator 2928			+ .50
ONEILLS Rachel 52	#Papa Envious Blackbird 8849			FAT
+16512840 ONEILLS Rachel	#ONEILLS Renovator			- .079
	#Lady Forever 1100 GDAR			\$W
				+25.42

CED	BEPD	WEPD	YEPD	RADG	SC	MILK	\$B
-4	.25	+3.5	.32	+43	23	+80	.18
				+2.27	.05	+4.41	.05
						+20	.14
							+118.31

- A maternal sister to ONEILLS Leader, the \$21,000 top-selling bull over all breeds of the 2012 Iowa Beef Expo.
- Another maternal brother sold for \$7,000 and maternal sisters sold for \$6,750, \$6,000 for one-half interest and two others for \$6,000 each.
- The donor dam has a progeny weaning ratio of 109 on two natural calves along with progeny IMF and ribeye ratios of 103 and 105, respectively, on 14 head.
- Sells with a bull calf at side (Lot 50A) calved September 3, 2016 by ONEILLS GERONIMO. Tattoo 726. Tag 1717 Bull Calf. Birth weight 93 pounds.



ONEILLS 9Q13 804 - Full brother to Lots 51A, 51B and 51C.

50B

ONEILLS Rachel 65

Birth Date: 9-18-2015	Cow 18564917	Tattoo: 755	Tag: 1717 HEIFER	CW
#SAV Pioneer 7301	#SAV Final Answer 0035 [PROF]			+43
ONEILLS Frontiersman	SAV Blackbird 5297			MARB
17281878 +ONEILLS Royal Lady Elaine	#ONEILLS Expedition			+ .28
	+ONEILLS Royal Lady 29			RE
	+ONEILLS Legacy			+ .81
ONEILLS Rachel 58	#DHD Traveler 6807			FAT
17575924 +ONEILLS Rachel 52	ONEILLS Eraline 234			- .038
	#Papa Equator 2928			\$W
	+ONEILLS Rachel			+35.45

CED	BEPD	WEPD	YEPD	RADG	SC	MILK	\$B
I-3	.05	+3.8	.05	+55	.05	+100	.05
				N/A	N/A	N/A	N/A
						+21	.05
							+126.83

- A fall heifer backed by ONEILLS Frontiersman and ONEILLS Legacy, stemming from the \$29,500 ONEILLS Rachel.
- The dam is a maternal sister to the \$21,000 ONEILLS Leader.
- Birth weight 76 pounds.

51A

ONEILLS Rachel 67

Birth Date: 9-10-2015	Cow +18566316	Tattoo: 585	Tag: 1667B HEIFER
			• Birth weight 75 pounds.

51B

ONEILLS Rachel 68

Birth Date: 9-13-2015	Cow +18566319	Tattoo: 605	Tag: 1667C HEIFER
			• Birth weight 68 pounds.

51C

ONEILLS Rito 9Q13 555

Birth Date: 3-15-2015	Bull +18451729	Tattoo: 555	Tag: 1667A BULL	CW
#Gardens Highmark	#Summitcrest Scotch Cap 0B45			+51
Rito 9Q13 of Rita 5F56 GHM	Green Garden Pride 6128 S1			MARB
+16408438 +Rita 5F56 of 1198 FD	#CA Future Direction 5321			+ .33
	+Rita 1198 of 2536 Rito 616			RE
	#Papa Equator 2928			+1.22
ONEILLS Rachel 52	#Papa Power 096			FAT
+16512840 +ONEILLS Rachel	#Papa Envious Blackbird 8849			- .049
	#ONEILLS Renovator			\$W
	#Lady Forever 1100 GDAR			+20.85

CED	BEPD	WEPD	YEPD	RADG	SC	MILK	\$B
I-7	.05	+4.3	.05	+47	.05	+92	.05
				+1.31	.05	+1.03	.05
						+17	.05
							+154.37

- Birth weight 88 pounds.
- A trio of full siblings from an embryo mating that combines the carcass genetics of their sire with the high growth genetics of Papa Equator 2928, stemming from the maternal influence of the \$29,500 ONEILLS Rachel.
- Maternal siblings include the \$21,000 ONEILLS Leader.

ONEILLS RACHEL FAMILY



ONEILLS RACHEL 55 - Lot 52



ONEILLS RACHEL 52 - The dam of Lots 50, 51A, 51B and 51C, and maternal sister to the dam of Lots 52 and 52B.

52 Oneills Rachel 55

Birth Date: 9-13-2011	Cow 17217000	Tattoo: 761	Tag: 1695 COW	CW			
#+BT Crossover 758N				+21			
#CA Future Direction 5321				MARB			
BT Royal Pride 237G				+ .29			
#+SAF 598 Bando 5175				RE			
+ONEills Royal Lady 28				+ .53			
+ONEills Stockman 587				FAT			
+ONEills Royal Lady 11				- .042			
#+ONEills Renovator				\$W			
#Lady Forever 1100 GDAR				+15.97			
CED	BEPD	WEPD	YEPD	RADG	SC	MILK	\$B
+1 .25	+3.1 .34	+32 .25	+68 .20	+25 .16	+04 .19	+20 .19	+92.46

- A granddaughter of the \$29,500 top-selling Lot 1 cow of the 1995 O'Neill Sale who went on to sell as a 12 year old as the \$15,000 top-selling female of the Oak Hill Mature Cow Herd Dispersal to DaEsRo Farm where she produced, at 17 years of age, the Iowa State Fair Grand Champion Female, and later produced the sires of two Iowa Beef Expo Grand Champion Females.
- The Pathfinder third dam is an O'Neill foundation female who is a full sister to the Pathfinder Sire, Traveler 3173 GDAR.
- Bred June 1, 2016 to ONEILLS GERONIMO and exposed to him.

52A Oneills Geronimo 346

Birth Date: 3-7-2016	Bull 18585636	Tattoo: 346	Tag: 1695 BULL	CW			
ONEills Frontiersman				1+29			
#SAV Pioneer 7301				MARB			
+ONEills Royal Lady Elaine				1+ .39			
#+Rito 112 of 2536 Rito 616				RE			
#+ONEills Delia 703				1+ .62			
+ONEills OMAI King				FAT			
+ONEills Rachel 55				1- .029			
ONEills 587 Stockman 660				\$W			
+ONEills Rachel				+37.28			
CED	BEPD	WEPD	YEPD	RADG	SC	MILK	\$B
1+3 .05	1+2.6 .05	1+45 .05	1+82 .05	1+25 .05	1+50 .05	1+22 .05	+110.41

- A March herd sire prospect backed by the Rachel Delia family, sired by ONEills Geronimo.
- This bull is from the same family as the \$21,000 ONEills Leader.
- Birth weight 72 pounds.

52B Oneills Rachel 66

Birth Date: 9-20-2015	Cow 18564919	Tattoo: 775	Tag: 1653 HEIFER	CW			
#Gardens Prime Star				1+19			
#N Bar Prime Time D806				MARB			
Green Garden Jilt C242 S1				1+ .59			
#ONEills Expedition				RE			
+ONEills Eraline 231				1+ .28			
ONEills 587 Stockman 660				FAT			
+ONEills Stockman 587				1- .006			
+ONEills Royal Lady 11				\$W			
#+ONEills Renovator				+16.20			
#Lady Forever 1100 GDAR				+16.20			
CED	BEPD	WEPD	YEPD	RADG	SC	MILK	\$B
1+3 .05	1+4.1 .05	1+34 .05	1+67 .05	1+20 .05	1+56 .05	1+18 .05	+88.17

- This fall yearling heifer is a maternal sister to Lot 52 who records progeny weaning and yearling ratios of 102 and 103, respectively, on one calf.
- The grandam is the \$29,500 ONEills Rachel who generated a phenomenal production record with a long list of top-selling and championship progeny.
- This heifer carries forward the Rachel family that has also been enormously successful at Gartner-Denowh Angus Ranch.



ONEILLS GERONIMO 346 - Lot 52A

ONEILLS RACHEL FAMILY



ONEILLS RACHEL 70 - Lot 55A

54 Kodry Rachel 15

54	Birth Date: 4-17-2011	Cow 17233267	Tattoo: 1309	Tag: 31-15 COW	CW
	#Isu Imaging Q 9111	#GT Expo			N/A
Kodry Royal Lad		Summitcrest Pride 351F		MARB	N/A
+15733105	+Oneills Royal Lady 28	#DHD Traveler 6807		RE	N/A
	+Oneills Adventure K426	+Oneills Royal Lady 10		N/A	N/A
		Circle A Adventure 0124		FAT	N/A
Kodry Rachel 9		Oneills Delia 715		N/A	N/A
16047600	Kodry Rachel 8	Oneills 587 Stockman 482		\$W	N/A
		+Oneills Rachel 14		\$B	+29.48

CED	BEPD	WEPD	YEPD	RADG	SC	MILK	\$B
+4	.14	+1.8	.19	+37	.14	+68	.09
N/A	N/A	N/A	N/A	N/A	N/A	N/A	N/A

- This cow from the Rachel family has a progeny weaning ratio of 110 on one calf in the AHIR program and also has a three-year-old daughter who sells as Lot 55.
- This female features a unique genetic blending from a dam who sells as Lot 53.
- Bred May 27, 2016 to ONEILLS BLACK BARDOLIER.

54A Oneills Rachel 69

54A	Birth Date: 3-7-2016	Cow 18585637	Tattoo: 356	Tag: 31-15 HEIFER	CW
	#SAV Pioneer 7301	#SAV Final Answer 0035 [PDF]			N/A
Oneills Absolute		SAV Blackbird 5297		MARB	N/A
+17876887	Oneills Eraline 234	#Oneills Expedition		RE	N/A
	+Kodry Royal Lad	+Oneills Eraline 231		N/A	N/A
		#Isu Imaging Q 9111		FAT	N/A
Kodry Rachel 15		+Oneills Royal Lady 28		N/A	N/A
17233267	Kodry Rachel 9	+Oneills Adventure K426		\$W	N/A
		Kodry Rachel 8		\$B	+35.83

CED	BEPD	WEPD	YEPD	RADG	SC	MILK	\$B
+4	.05	+2.2	.05	+44	.05	+80	.05
N/A	N/A	N/A	N/A	N/A	N/A	N/A	N/A

- A March Rachel heifer by Oneills Absolute, from a dam who records a progeny weaning ratio of 110 on one calf.
- The grandam sells as Lot 53 and she is sired by a full brother to Oneills Expedition and Oneills Adventure K325.
- A maternal sister sells as Lot 55.
- Birth weight 64 pounds.

55 Kodry Rachel 17

55	Birth Date: 4-3-2013	Cow 17542825	Tattoo: 3315	Tag: 33-17 COW	CW
	+Oneills Renovation	#+Oneills Renovator			N/A
Oneills Renovation 920		+Oneills Royal Lady 40		MARB	N/A
16917354	+Oneills Delia 725	#Isu Imaging Q 9111		RE	N/A
		Oneills Delia 715		N/A	N/A
	+Kodry Royal Lad	#Isu Imaging Q 9111		FAT	N/A
Kodry Rachel 15		+Oneills Royal Lady 28		N/A	N/A
17233267	Kodry Rachel 9	+Oneills Adventure K426		\$W	N/A
		Kodry Rachel 8		\$B	+23.64

CED	BEPD	WEPD	YEPD	RADG	SC	MILK	\$B
+7	.05	+4.1	.05	+42	.05	+79	.05
N/A	N/A	N/A	N/A	N/A	N/A	N/A	N/A

- A daughter of Lot 54 and a granddaughter of Lot 53.
- This three-year-old cow by Oneills Renovation is from a dam with a progeny weaning ratio of 110 on one calf, from the family tracing to the \$29,500 Oneills Rachel.
- Bred May 16, 2016 to ONEILLS BLACK BARDOLIER. Exposed to ONEILLS GERONIMO after June 5, 2016.

55A Oneills Rachel 70

55A	Birth Date: 3-31-2016	Cow Reg.No.Pdg.	Tattoo: 536	Tag: 33-17 HEIFER	CW
	#SAV Pioneer 7301	#SAV Final Answer 0035 [PDF]			N/A
Oneills Resolute		SAV Blackbird 5297		MARB	N/A
17866927	+Oneills Forever Eraline 38	#Oneills Expedition		RE	N/A
		+Oneills Forever Eraline 15		N/A	N/A
	Oneills Renovation 920	+Oneills Renovation		FAT	N/A
Kodry Rachel 17		+Oneills Delia 725		N/A	N/A
17542825	Kodry Rachel 15	+Kodry Royal Lad		\$W	N/A
		Kodry Rachel 9		\$B	+18.05

CED	BEPD	WEPD	YEPD	RADG	SC	MILK	\$B
+9	.38	-2	.43	+45	.32	+83	.36
+7	.05	+4.1	.05	+42	.05	+79	.05
N/A	N/A	N/A	N/A	N/A	N/A	N/A	N/A

CW	MARB	RE	FAT	\$W	\$B
+28	+27	+70	+053	+40.29	+90.64
N/A	N/A	N/A	N/A	+23.64	N/A

- A heifer from the Rachel family by Oneills Resolute.
- This female is backed by generations of O'Neill breeding, stemming from a grandam who sells as Lot 54 and a third dam who sells as Lot 53.
- Birth weight 74 pounds.

53 Kodry Rachel 9 [CAF]

53	Birth Date: 3-23-2008	Cow 16047600	Tattoo: 8308	Tag: 38-09 COW	CW
	Circle A Adventure 0124	#SAF Focus of ER			N/A
Oneills Adventure K426		+Acf Evergreen 8007		MARB	N/A
+15539265	Oneills Delia 715	+Circle Oak Traveler 524		RE	N/A
		#+Oneills Delia 703		N/A	N/A
	Oneills 587 Stockman 482	+Oneills Stockman 587		FAT	N/A
Kodry Rachel 8		Oneills Eraline 222		N/A	N/A
15375056	+Oneills Rachel 14	#+JR Juice 2005		\$W	N/A
		+Oneills Rachel		\$B	+15.13

CED	BEPD	WEPD	YEPD	RADG	SC	MILK	\$B
+3	.25	+2.3	.36	+34	.24	+64	.10
N/A	N/A	N/A	N/A	N/A	N/A	N/A	N/A

- This proven producer is backed by a rich heritage of O'Neill genetics, tracing to the \$29,500 Oneills Rachel.
- The sire of this cow is a full brother to Oneills Expedition and Oneills Adventure K325.
- A daughter sells as Lot 54.
- Exposed to ONEILLS 9Q13 of 720.

53A Oneills Absolute 376

53A	Birth Date: 3-11-2016	Bull 18585639	Tattoo: 376	Tag: 38-09 BULL	CW
	#SAV Pioneer 7301	#SAV Final Answer 0035 [PDF]			N/A
Oneills Absolute		SAV Blackbird 5297		MARB	N/A
+17876887	Oneills Eraline 234	#Oneills Expedition		RE	N/A
		+Oneills Eraline 231		N/A	N/A
	+Oneills Adventure K426	Circle A Adventure 0124		FAT	N/A
Kodry Rachel 9		Oneills Delia 715		N/A	N/A
16047600	Kodry Rachel 8	Oneills 587 Stockman 482		\$W	N/A
		+Oneills Rachel 14		\$B	+29.15

CED	BEPD	WEPD	YEPD	RADG	SC	MILK	\$B
+4	.05	+2.5	.05	+43	.05	+78	.05
N/A	N/A	N/A	N/A	N/A	N/A	N/A	N/A

- A March herd sire prospect by Oneills Absolute, from the herd sire producing family that traces to the \$29,500 Oneills Rachel.
- A maternal sister who sells as Lot 54, records a progeny weaning ratio of 110 on one calf.
- Birth weight 67 pounds.

53B Oneills Renovation 5309

53B	Birth Date: 4-20-2015	Bull 18137934	Tattoo: 5309	Tag: 53-09 BULL	CW
	+Oneills Renovation	#+Oneills Renovator			N/A
Oneills Renovation 920		+Oneills Royal Lady 40		MARB	N/A
16917354	+Oneills Delia 725	#Isu Imaging Q 9111		RE	N/A
		Oneills Delia 715		N/A	N/A
	+Oneills Adventure K426	Circle A Adventure 0124		FAT	N/A
Kodry Rachel 9		Oneills Delia 715		N/A	N/A
16047600	Kodry Rachel 8	Oneills 587 Stockman 482		\$W	N/A
		+Oneills Rachel 14		\$B	+18.05

CED	BEPD	WEPD	YEPD	RADG	SC	MILK	\$B
+7	.05	+4.3	.05	+41	.05	+77	.05
N/A	N/A	N/A	N/A	N/A	N/A	N/A	N/A

- This coming two-year-old bull from the Rachel family is sired by the Kodry sire, Oneills Renovation 920.
- This bull is linebred through the maternal siblings, Oneills Adventure K426 and Oneills Delia 725.
- A maternal sister sells as Lot 54.

RACHEL



ONEILLS RACHEL - Featuring the influence of this \$29,500 top-selling Lot 1 cow.

56 Oneills Rachel 3912

Birth Date: 3-20-2014	Cow 17816934	Tattoo: 3912	Tag: 34-21 COW	CW
+Oneills Renovation				N/A
#Oneills Renovator				MARB
+Oneills Royal Lady 40				N/A
#Isu Imaging Q 9111				RE
Oneills Delia 715				N/A
+Oneills Adventure K426				FAT
Circle A Adventure 0124				N/A
Oneills Delia 715				\$W
#Da Es Ro Twister 0627				+13.14
+Oneills Rachel				

CED	BEPD	WEPD	YEPD	RADG	SC	MILK	\$B							
-8	.19	+5.1	.31	+42	.20	+80	.10	N/A	N/A	N/A	N/A	+15	.09	N/A

- A descendant of the \$29,500 Oneills Rachel, sired by Oneills Renovation 920.
- This linebred female stems from a grandam who was produced in the embryo program at DaEsRo Farms who also enjoyed tremendous success with this cow family.
- A full sister produced Lot 57.
- Bred April 21, 2016 to ONEILLS BLACK BARDOLIER and exposed to him.

56A Oneills Renovation 5312

Birth Date: 4-19-2015	Bull 18137932	Tattoo: 5312	Tag: 53-12 BULL	CW
+Oneills Renovation				N/A
#Oneills Renovator				MARB
+Oneills Royal Lady 40				N/A
#Isu Imaging Q 9111				RE
Oneills Delia 715				N/A
+Oneills Adventure K426				FAT
Circle A Adventure 0124				N/A
Oneills Delia 715				\$W
#Da Es Ro Twister 0627				+16.10
+Oneills Rachel				

CED	BEPD	WEPD	YEPD	RADG	SC	MILK	\$B							
I-8	.05	I+4.6	.05	I+42	.05	I+80	.05	N/A	N/A	N/A	N/A	I+16	.05	N/A

- A full brother to the dam of Lot 57.
- This coming two-year-old bull is sired by Oneills Renovation 920, from the family tracing to the \$29,500 Oneills Rachel.

57 Oneills Jock 5318

Birth Date: 3-16-2015	Bull 18137920	Tattoo: 5318	Tag: 53-18 BULL
Oneills Jock			
+Oneills Renovation			
Oneills Royal Lady 56			
#Oneills Expedition			
+Oneills Lady Eraline 100			
Oneills Renovation 920			
+Oneills Renovator			
+Oneills Delia 725			
+Oneills Adventure K426			
+DA ES RO Rachel 5211			

CED	BEPD	WEPD	YEPD	RADG	SC	MILK								
S	+7	.35	+1.5	.41	+44	.30	+76	.30	+26	.29	+1.05	.36	+18	.14
D	I-8	.05	I+4.6	.05	I+42	.05	I+80	.05	N/A	N/A	N/A	N/A	I+16	.05

- This coming two-year-old bull is double-bred to Oneills Renovation, backed by generations of O'Neill breeding.
- The dam of this bull is a full sister to Lot 56A.

QUEEN ANNE/LADY ANN



ONEILLS QUEEN ANNE - The grandam of Lot 58.

58 Oneills Queen Anne 29

Birth Date: 1-15-2012	Cow 17343747	Tattoo: 52	Tag: 1712 COW	CW
#Oneills Expedition				+32
Circle A Adventure 0124				MARB
Oneills Delia 715				+33
#Twin Valley Precision E161 (RDF)				RE
+Oneills Forever Eraline 4				+38
#Leachman Right Time				FAT
#N Bar Emulation EXT				-.042
Leachman Erica 0025				\$W
#+Oneills Renovator				+32.17
#FV Queen 399				

CED	BEPD	WEPD	YEPD	RADG	SC	MILK	\$B							
+1	.21	+2.6	.33	+48	.22	+82	.15	N/A	N/A	I+47	.05	+17	.13	+103.10

- A daughter of the high-performance sire, Oneills Exposition, with an individual weaning ratio of 105 combined with individual IMF and ribeye ratios of 108 and 111, respectively.
- The grandam earned an outstanding production record and she is a maternal sister to the Pathfinder Sires, Baldrige Oscar and Oneills Renault, stemming from the O'Neill foundation Pathfinder Dam, FV Queen 399.
- Will sell with a calf at side (Lot 58A) or close to calving, to ONEILLS GERONIMO.

59 Oneills Lady Ann Embryos

Two Frozen Embryos		+Oneills Stockman 587	#TC Stockman 365
Oneills Prime Force		13884587	Oneills Eraline 221
#GT Maximum			#Scotch Cap
Oneills Lady Ann 10		+12383167	+Oneills Lady Ann
			#Miss Traveler 58
			#Premier Independence KN
			Oneills Annie 78

CED	BEPD	WEPD	YEPD	RADG	SC	MILK								
S	+3	.53	+2.7	.81	+34	.73	+60	.58	+15	.25	+49	.58	+23	.50
D	+2	.37	+3.7	.51	+34	.40	+59	.32	+11	.22	+92	.46	+14	.41

CW	MARB	RE	FAT	\$W	\$B	
S	-2	+58	-.46	-.015	+25.31	+35.49
D	+28	+41	+13	+015	+6.56	+93.59

- The result of a timeless embryo mating by the \$25,000 Oneills Prime Force, from a powerful donor dam who recorded a progeny weaning ratio of 103 on seven natural calves and a progeny IMF ratio of 105 on 40 head, and lived past 15 years of age.
- Maternal sisters have sold for \$7,500, \$6,300, \$4,500 and \$3,500, and sons include a \$6,000 bull.



ONEILLS LADY ANN 10 - The dam of Lot 59.

ONEILLS ELLEN & QUEEN FAMILIES



ONEILLS ELLEN - Lot 60



ONEILLS LEGACY 793 - His dam sells as Lot 60.

60 Oneills Ellen

Birth Date: 10-4-2008	Cow 16217213	Tattoo: 798	Tag: 1666 COW	CW										
Circle A Adventure 0124				+31										
#SAF Focus of ER				MARB										
+Acf Evergreen 8007				+ .45										
+Circle Oak Traveler 524				RE										
#+Oneills Delia 703				+ .22										
#Boyd Poundmaker 21				FAT										
#Sitz Alliance 6595				- .050										
+Boyd Forever Lady 9001				\$W										
Hyline Power Play 781				+22.34										
Hyline Ellen 225				\$B										
CED	BEPD	WEPD	YEPD	RADG	SC	MILK	\$B							
+1	.26	+2.8	.36	+39	.28	+73	.27	N/A	N/A	N/A	N/A	+18	.27	+104.27

- This impressive cow has earned a progeny weaning ratio of 101 on three calves along with progeny IMF and ribeye ratios of 102 and 104, respectively, on two head.
- This cow is by the high-performance and high feed-efficiency Pathfinder Sire, Oneills Expedition, and stems from a maternal grandam who was bred in the Hyline herd in Montana.
- This bull produced the high-performing Oneills Legacy 793 and another sold for \$6,750 to Leon Teske of Iowa.
- Will sell with a calf at side (Lot 60A) or close to calving, to ONEILLS GERONIMO.

60B Oneills Jock 835

Birth Date: 10-29-2015	Bull 18564921	Tattoo: 835	Tag: 1666 BULL	CW										
+Oneills Renovation				I+29										
#+Oneills Renovator				MARB										
+Oneills Royal Lady 40				I+ .20										
#Oneills Expedition				RE										
+Oneills Royal Lady 39				I+ .40										
#Oneills Expedition				FAT										
Circle A Adventure 0124				I- .048										
Oneills Delia 715				\$W										
#+Boyd Poundmaker 21				+27.13										
Hyline Ellen 557				\$B										
CED	BEPD	WEPD	YEPD	RADG	SC	MILK	\$B							
I+8	.05	I+1	.05	I+37	.05	I+68	.05	N/A	N/A	N/A	N/A	I+17	.05	+90.83

- This fall yearling bull is a maternal brother to the high-performing Oneills Legacy 793 and to a bull selected by Leon Teske of Iowa for \$6,750.
- This calving-ease prospect by Oneills Jock is from a dam with a progeny weaning ratio of 101 on three calves by the Pathfinder Sire, Oneills Expedition.
- Birth weight 72 pounds.

61 Kodry Queen 40

Birth Date: 4-18-2010	Cow 17233258	Tattoo: 0520	Tag: 50-40 COW	CW										
Circle A Adventure 0124				N/A										
#SAF Focus of ER				MARB										
+Acf Evergreen 8007				N/A										
+Circle Oak Traveler 524				RE										
#+Oneills Delia 703				N/A										
#GAR 6807 Traveler 4144				FAT										
#Kodry Eisa Erica 3				N/A										
Rito 505 of Oneill				\$W										
RAF Queen 16				+9.76										
CED	BEPD	WEPD	YEPD	RADG	SC	MILK	\$B							
+1	.18	+2.9	.26	+36	.19	+65	.09	N/A	N/A	N/A	N/A	+8	.19	N/A

- This cow is from the same family as Spartan Grandeur O, who sold one-half interest for \$50,000 as the top-selling bull of a past O'Neill sale to Thomas Angus Ranch of Oregon.
- This cow is also from the same family as the \$10,000 Oneills Tall Queen to Rader Angus in Nebraska.
- Bred April 21, 2016 to ONEILLS BLACK BARDOLIER and exposed to him.

61A Oneills Absolute 516

Birth Date: 3-28-2016	Bull 18585649	Tattoo: 516	Tag: 50-40 BULL	CW										
#SAV Pioneer 7301				N/A										
#SAV Final Answer 0035 [RF]				MARB										
SAV Blackbird 5297				N/A										
#Oneills Expedition				RE										
+Oneills Eraline 231				N/A										
+Oneills Adventure K426				FAT										
Circle A Adventure 0124				N/A										
Oneills Delia 715				\$W										
Kodry Traveler 343				+27.56										
Kodry Queen 4				\$B										
CED	BEPD	WEPD	YEPD	RADG	SC	MILK	\$B							
I+3	.05	I+2.8	.05	I+44	.05	I+78	.05	N/A	N/A	N/A	N/A	I+17	.05	N/A

- This son of Oneills Absolute is from a dam who is sired by a full brother to both Oneills Expedition and Oneills Adventure K325.
- This bull is from the same family as the \$50,000 Spartan Grandeur O and the \$10,000 Oneills Tall Queen.
- Birth weight 70 pounds.

ONEILLS BLACKETTE & EISA ERICA FAMILIES

62 Kodry Blackette Lady 23 [OHP-CAF]

Birth Date: 3-27-2010	Cow 17233255	Tattoo: 0213	Tag: 20-23 COW	CW
Circle A Adventure 0124	#SAF Focus of ER			N/A
ONeills Adventure K426	+Acf Evergreen 8007			MARB
+15539265	+Circle Oak Traveler 524			N/A
	#+ONeills Delia 703			RE
				N/A
	#+GDAR SVF Traveler 234D			FAT
Kodry Talisman	#Kodry Lady Eraline 5			N/A
Kodry Blackette Lady 13	+Kodry Black Hawk			N/A
14215499	ONeills Blackette Lady 9			\$W
				+20.08

CED	BEPD	WEPD	YEPD	RADG	SC	MILK	\$B
-1	.16	+4.4	.25	+41	.18	+74	.09
N/A	N/A	N/A	N/A	N/A	N/A	N/A	N/A
+18	.20	N/A	N/A	N/A	N/A	N/A	N/A

- This cow records a progeny weaning ratio of 105 on two calves and she is sired by a full brother to ONeills Expedition and ONeills Adventure K325.
- This cow traces to an O'Neill foundation female bred at Gartner-Denowh Angus Ranch in Montana.
- A daughter sells as Lot 63.
- Bred June 10, 2016 to ONEILLS FRONTIERSMAN and exposed to him.

62A ONeills Absolute 366 [OHP]

Birth Date: 3-10-2016	Bull 18585638	Tattoo: 366	Tag: 20-23 BULL	CW
#SAV Pioneer 7301	#SAV Final Answer 0035 [RDF]			N/A
ONeills Absolute	SAV Blackbird 5297			MARB
+17876887	#ONeills Expedition			N/A
	+ONeills Eraline 231			RE
				N/A
	Circle A Adventure 0124			FAT
+ONeills Adventure K426	ONeills Delia 715			N/A
Kodry Blackette Lady 23	Kodry Talisman			\$W
17233555	Kodry Blackette Lady 13			+31.24

CED	BEPD	WEPD	YEPD	RADG	SC	MILK	\$B
+2	.05	+3.5	.05	+46	.05	+83	.05
N/A	N/A	N/A	N/A	N/A	N/A	N/A	N/A
+22	.05	N/A	N/A	N/A	N/A	N/A	N/A

- A son of ONeills Absolute from a dam by ONeills Adventure K426.
- The dam records a progeny weaning ratio of 105 on two calves.
- A maternal sister sells as Lot 63.
- Birth weight 73 pounds.

63 ONeills Blackette Lady 2023 [OHP]

Birth Date: 6-2-2014	Cow 17833891	Tattoo: 2023	Tag: 24-26 COW	CW
+ONeills Renovation	#+ONeills Renovator			N/A
ONeills Renovation 920	+ONeills Royal Lady 40			MARB
16917354	#Isu Imaging Q 9111			N/A
	ONeills Delia 715			RE
				N/A
	Circle A Adventure 0124			FAT
+ONeills Adventure K426	ONeills Delia 715			N/A
Kodry Blackette Lady 23	Kodry Talisman			\$W
17233255	Kodry Blackette Lady 13			+22.66

CED	BEPD	WEPD	YEPD	RADG	SC	MILK	\$B
-10	.18	+5.8	.31	+49	.20	+87	.09
N/A	N/A	N/A	N/A	N/A	N/A	N/A	N/A
+19	.09	N/A	N/A	N/A	N/A	N/A	N/A

- This two-year-old cow recorded an individual weaning ratio of 110, from a dam who records a progeny weaning ratio of 105 on two calves and sells as Lot 62.
- This female is linebred to ONeills Delia 715.
- Exposed to ONEILLS BLACK BARDOLIER from April 21, 2016 to June 27, 2016. Exposed to ONEILLS 9Q13 OF 720 after July 22, 2016.

63A ONeills Resolute 306 [OHP]

Birth Date: 3-5-2016	Bull 18586073	Tattoo: 306	Tag: 24-26 BULL	CW
#SAV Pioneer 7301	#SAV Final Answer 0035 [RDF]			N/A
ONeills Resolute	SAV Blackbird 5297			MARB
17866927	#ONeills Expedition			N/A
	+ONeills Forever Eraline 15			RE
				N/A
	+ONeills Renovation			FAT
ONeills Renovation 920	+ONeills Delia 725			N/A
ONeills Blackette Lady 2023	+ONeills Adventure K426			\$W
17833891	Kodry Blackette Lady 13			+31.27

CED	BEPD	WEPD	YEPD	RADG	SC	MILK	\$B
+1	.05	+2.8	.05	+47	.05	+85	.05
N/A	N/A	N/A	N/A	N/A	N/A	N/A	N/A
+19	.05	N/A	N/A	N/A	N/A	N/A	N/A

- A March son of ONeills Resolute from a dam backed by the Kodry sires, ONeills Renovation 920 and ONeills Adventure K426.
- The dam of this bull earned an individual weaning ratio of 110.
- The grandam sells as Lot 62.
- Birth weight 52 pounds. (Twin)



Real-time bidding via the Internet for this sale. Live audio and live video will allow buyers to bid on animals just as if they were present at the sale. Buyers must create an account and request a buyer number. Instructions are available to walk you through the account set-up process. Web address: www.liveauctions.tv. E-mail address: brad@liveauctionstv.com. Contact: Brad Fahrmeier (816) 392-9241.

64 Kodry Eisa Erica 23 [DDP-CAF]

Birth Date: 8-13-2006	Cow 15415028	Tattoo: 642	Tag: 46-23 COW	CW
Sitz Alliance 7059	#Sitz Traveler 8180			N/A
Sitz Alliance 6421	#Sitz Barbaramere Jet 2698			MARB
13834108	#Sitz Alliance 6595			N/A
	#Sitz Barbaramere Nell 1459			RE
				N/A
	Rito 505 of Oneill			FAT
Kodry Eisa Erica 2	Bear MTN Lady Eraline 302			N/A
#13215702	#+ONeills Renovator			\$W
	ONeills Eisa Erica 31			+36.66

CED	BEPD	WEPD	YEPD	RADG	SC	MILK	\$B
-3	.17	+4.3	.29	+40	.26	+60	.14
N/A	N/A	N/A	N/A	N/A	N/A	N/A	N/A
+2	.05	+30	.25	N/A	N/A	N/A	N/A

- This cow has earned a progeny weaning ratio of 106 on three calves and she stems from one of the oldest cow families in the O'Neill program.
- The Pathfinder Dam of this cow is sired by the All-American first-prize winner, Rito 505 of Oneill, the top-selling bull calf of a past O'Neill sale where his dam was one of the top-selling cows after being an All-American Reserve Grand Champion Cow.
- Bred May 27, 2016 to ONEILLS BLACK BARDOLIER. Exposed to ONEILLS 9Q13 of 720.

64A ONeills Absolute 506 [DDP]

Birth Date: 3-28-2016	Bull 18585648	Tattoo: 506	Tag: 46-23 BULL	CW
#SAV Pioneer 7301	#SAV Final Answer 0035 [RDF]			N/A
ONeills Absolute	SAV Blackbird 5297			MARB
+17876887	#ONeills Expedition			N/A
	+ONeills Eraline 231			RE
				N/A
	Sitz Alliance 6421			FAT
Kodry Eisa Erica 23	Sitz Barbaramere Nell 867			N/A
15415028	Rito 505 of Oneill			\$W
	ONeills Eisa Erica 34			+39.93

CED	BEPD	WEPD	YEPD	RADG	SC	MILK	\$B
+1	.05	+3.5	.05	+46	.05	+76	.05
N/A	N/A	N/A	N/A	N/A	N/A	N/A	N/A
+28	.05	N/A	N/A	N/A	N/A	N/A	N/A

- A March herd sire prospect by ONeills Absolute, from one of the oldest cow families in the O'Neill program.
- The dam has a progeny weaning ratio of 106 on three calves and the grandam is a Pathfinder Dam.
- Birth weight 80 pounds.



IC showing the many-time state fair champion, "Expedition."

ONEILLS BARBARA BELL FAMILY



ONEILLS BARBARA BELL 85 - The dam of Lot 65.

67 Kodry Barbara Bell 31 ^[CAF]

Birth Date: 3-27-2010	Cow 17233259	Tattoo: 0716	Tag: 70-31 COW	CW
#Isu Imaging Q 9111				N/A
Kodry Royal Lad				MARB
+15733105 +Oneills Royal Lady 28				N/A
#Leachman Right Time				RE
Kodry Barbara Bell 16				N/A
+15376267 Oneills Barbara Bell 85				FAT
				N/A
				\$W
				+27.86
				\$B

- A blending of the Barbara Bell and Royal Lady families, from a dam who records a progeny weaning ratio of 109 on three calves and sells as Lot 65.
- The grandam is the twice Iowa State Fair Grand Champion Cow, Oneills Barbara Bell 85.
- Bred May 27, 2016 to ONEILLS BLACK BARDOLIER.

67A Oneills Barbara Bell 128

Birth Date: 3-25-2016	Cow 18585647	Tattoo: 496	Tag: 70-31 HEIFER	CW
#SAV Pioneer 7301				N/A
Oneills Absolute				MARB
+17876887 Oneills Eraline 234				N/A
				RE
				N/A
				FAT
				N/A
				\$W
				+26.15
				\$B

CED	BEPD	WEPD	YEPD	RADG	SC	MILK	\$B
+4.36	+2.64	+51.32	+91.34	+21.40	+49.42	+25.25	
-2.29	+3.635	+38.29	+62.26	+1.1705	+1.3205	+23.32	+70.49

CW	MARB	RE	FAT	\$W	\$B
+27	+41	+41	+042	+47.12	+90.53
N/A	N/A	N/A	N/A	+27.86	N/A

- A new generation of the Barbara Bell family by Oneills Absolute, tracing to the twice Iowa State Fair Grand Champion Cow, Oneills Barbara Bell 85.
- The grandam records a progeny weaning ratio of 109 on three calves and sells as Lot 65.
- Birth weight 77 pounds.

68 Kodry Barbara Bell 21 ^[OHP-CAF]

Birth Date: 3-17-2007	Cow 15922240	Tattoo: 773	Tag: 77-21 COW	CW
Sitz Alliance 7059				N/A
Sitz Alliance 6421				MARB
13834108 Sitz Bararamere Nell 867				N/A
				RE
				N/A
				FAT
				N/A
				\$W
				+45.84
				\$B

CED	BEPD	WEPD	YEPD	RADG	SC	MILK	\$B
+1.15	+2.628	+44.20	+68.13	N/A	N/A	N/A	+29.23

- A proven producer from the Barbara Bell family with a progeny birth ratio of 97 balanced with a progeny weaning ratio of 110 on two calves.
- A daughter sells as Lot 69 and a granddaughter sells as Lot 70.
- Exposed to ONEILLS BLACK BARDOLIER and ONEILLS GERONIMO.

68A Oneills Absolute 466 ^[OHP]

Birth Date: 3-17-2016	Bull 18585643	Tattoo: 466	Tag: 77-21 BULL	CW
#SAV Pioneer 7301				N/A
Oneills Absolute				MARB
+17876887 Oneills Eraline 234				N/A
				RE
				N/A
				FAT
				N/A
				\$W
				+43.49
				\$B

CED	BEPD	WEPD	YEPD	RADG	SC	MILK	\$B
+1.05	+5.05	+43.05	+76.05	N/A	N/A	N/A	+22.05

- An impressive March herd sire prospect by Oneills Absolute.
- The dam balances a progeny birth ratio of 97 with a progeny weaning ratio of 110 on two calves.
- A maternal sister sells as Lot 69.
- Birth weight 80 pounds.

65 Kodry Barbara Bell 16

Birth Date: 5-6-2006	Cow +15376267	Tattoo: 648	Tag: 76-16 COW	CW
#N Bar Emulation EXT				N/A
Leachman Right Time				MARB
#11750711 Leachman Erica 0025				+1.12
				RE
				N/A
				FAT
				-1.21
				\$W
				-1.011
				\$B
				+26.15

- A daughter of the twice Iowa State Fair Grand Champion Cow who was the \$10,000 top-selling cow of a past O'Neill sale to Circle A Ranch of Missouri.
- This daughter of the Pathfinder Sire, Leachman Right Time, has earned a progeny weaning ratio of 109 on three calves while her donor dam records a progeny weaning ratio of 106 on four natural calves.
- Exposed to ONEILLS 9Q13 of 720.

65A Oneills Absolute 426

Birth Date: 3-14-2016	Bull 18585640	Tattoo: 426	Tag: 76-16 BULL	CW
#SAV Pioneer 7301				N/A
Oneills Absolute				MARB
+17876887 Oneills Eraline 234				N/A
				RE
				N/A
				FAT
				N/A
				\$W
				+35.67
				\$B

CED	BEPD	WEPD	YEPD	RADG	SC	MILK	\$B
+1.05	+3.105	+45.05	+77.05	N/A	N/A	N/A	+24.05

- A son of Oneills Absolute from a productive dam who records a progeny weaning ratio of 109 on three calves.
- The grandam is a twice Iowa State Fair Grand Champion Cow and \$10,000 top-selling cow of a past O'Neill sale.
- Birth weight 66 pounds.

66 Kodry Barbara Bell 43

Birth Date: 3-30-2013	Cow 17542822	Tattoo: 3716	Tag: 73-43 COW	CW
+Oneills Renovation				N/A
Oneills Renovation 920				MARB
16917354 +Oneills Delia 725				N/A
				RE
				N/A
				FAT
				N/A
				\$W
				+24.26
				\$B

CED	BEPD	WEPD	YEPD	RADG	SC	MILK	\$B
+1.05	+5.05	+43.05	+76.05	N/A	N/A	N/A	+22.05

- This three-year-old daughter of Oneills Renovation was produced from a dam who records a progeny weaning ratio of 109 on three calves and sells as Lot 65.
- The grandam is the twice Iowa State Fair Grand Champion Cow, Oneills Barbara Bell 85.
- A maternal sister sells as Lot 67.
- Will sell with a calf at side (Lot 66A) or close to calving, to ONEILLS 72E DELTA.

ONEILLS BARBARA BELL FAMILY



ONEILLS ABSOLUTE 466 - Lot 68A

70 **Oneills Barbara Bell 7236** [OHP]
 Birth Date: 3-1-2014 Cow 17831958 Tattoo: 7236 Tag: 74-46 COW
 #DHD Traveler 6807 #QAS Traveler 23-4
Oneills Legacy #Bemindful Maid DHD 0807
 +16722180 Oneills Eraline 234 #Oneills Expedition
 Oneills Prime Force +Oneills Eraline 231
 +Oneills Stockman 587
Kodry Barbara Bell 36 Oneills Eraline 221
 17237823 Kodry Barbara Bell 21 Sitz Alliance 6421
 Kodry Barbara Bell 3

CW	N/A
MARB	N/A
RE	N/A
FAT	N/A
\$W	N/A
\$B	+41.39

- | CED | BEPD | WEPD | YEPD | RADG | SC | MILK | \$B |
|--------|--------|---------|---------|---------|---------|---------|-----|
| +6 .24 | +7 .33 | +45 .22 | +77 .13 | N/A N/A | N/A N/A | +23 .11 | N/A |
- A two-year-old daughter of Oneills Legacy who transmits beautiful udders.
 - This female has an individual birth ratio of 81 combined with an individual weaning ratio of 103, from a dam who sells as Lot 69.
 - The grandam has a progeny birth ratio of 97 combined with a progeny weaning ratio of 110 on two calves and sells as Lot 68.
 - Exposed to multiple sires.

- SEMEN -

Selling 20 units on each sire.

- LOT 71 - Happyvale Blackcap G 72E, Reg. #8191993, 06/09/1973
- LOT 72 - Circle Oak Traveler 524, Reg. +12406912, 03/18/1995
- LOT 73 - Oneills Exon, Reg. #+11461864, 05/02/1990
- LOT 74 - Oneills Quality Lad, Reg. +11815877, 01/08/1992
- LOT 75 - Oneills Renault, Reg. #+11157034, 05/17/1988
- LOT 76 - Oneills Crusader, Reg. 10972474, 03/06/1987
- LOT 77 - Oneills Camelot, Reg. 10197804, 05/15/1982
- LOT 78 - Oneills Excalibur, Reg. #10295479, 01/03/1983
- LOT 79 - Spartan Grandeur O, Reg. #9541423, 04/01/1979
- LOT 80 - The Hulk, Reg. 9823452, 04/02/1980
- LOT 81 - Thomas Chaps, Reg. #8713597, 01/22/1976
- LOT 82 - Prospect Genetic Engineer 64N, Reg. #+10229635, 05/02/1981
- LOT 83 - Gunston Tall Texan, Reg. #+9879465, 09/25/1980

69 **Kodry Barbara Bell 36** [OHP]
 Birth Date: 3-11-2012 Cow 17237823 Tattoo: 2721 Tag: 72-36 COW
 +Oneills Stockman 587 #TC Stockman 365
Oneills Prime Force +Oneills Lady Blackcap
 13884587 Oneills Eraline 221 +Circle Oak Traveler 524
 Oneills Eraline 188
 Sitz Alliance 6421 Sitz Alliance 7059
Kodry Barbara Bell 21 Sitz Bararamere Nell 867
 15922240 Kodry Barbara Bell 3 +Kodry Black Hawk
 RAF Barbara Bell 16

CW	N/A
MARB	N/A
RE	N/A
FAT	N/A
\$W	N/A
\$B	+41.76

- | CED | BEPD | WEPD | YEPD | RADG | SC | MILK | \$B |
|--------|----------|---------|---------|---------|---------|---------|-----|
| +3 .22 | +2.3 .35 | +44 .25 | +70 .16 | N/A N/A | N/A N/A | +26 .20 | N/A |
- This daughter of the \$25,000 Oneills Prime Force combines a progeny birth ratio of 81 with a progeny weaning ratio of 103 on one calf.
 - The dam has a progeny birth ratio of 97 combined with a progeny weaning ratio of 110 on two calves and sells as Lot 68.
 - A daughter sells as Lot 70.
 - Bred May 6, 2016 to ONEILLS BLACK BARDOLIER. Exposed to ONEILLS GERONIMO after May 24, 2016.

69A **Oneills Barbara Bell 127** [OHP]
 Birth Date: 3-16-2016 Cow 18585642 Tattoo: 456 Tag: 72-36 HEIFER
 #SAV Pioneer 7301 #SAV Final Answer 0035 [RDF]
Oneills Absolute SAV Blackbird 5297
 +17876887 Oneills Eraline 234 #Oneills Expedition
 Oneills Prime Force +Oneills Eraline 231
Kodry Barbara Bell 36 +Oneills Stockman 587
 17237823 Kodry Barbara Bell 21 Oneills Eraline 221
 Sitz Alliance 6421
 Kodry Barbara Bell 3

CW	N/A
MARB	N/A
RE	N/A
FAT	N/A
\$W	N/A
\$B	+42.48

- | CED | BEPD | WEPD | YEPD | RADG | SC | MILK | \$B |
|--------|----------|---------|---------|---------|---------|---------|-----|
| +4 .05 | +2.5 .05 | +48 .05 | +81 .05 | N/A N/A | N/A N/A | +26 .05 | N/A |
- A March heifer from the Barbara Bell family, sired by Oneills Absolute.
 - The dam has a progeny birth ratio of 81 combined with a progeny weaning ratio of 103 on one calf while the grandam records a progeny birth ratio of 97 combined with a progeny weaning ratio of 110 on two calves.



ONEILLS BARBARA BELL 127 - Lot 69A



An O'Neill Angus udder

Genetics Like No Other

What Sets a Good Breeding Bull Apart From the Rest!

O'Neill bulls are bred very differently from the mainline of the Angus breed. We don't follow fads, but follow a selective line-breeding program to set the type for consistency. We breed for structure of feet and legs, fertility, longevity, superior udders, excellent milk with correct teat size, pounds with extra muscle and carcass quality with calving ease and docility.

An O'Neill bull has to be able to travel free, put his back foot in his front track, taking a long stride, walking wide and straight behind and walking straight forward and not toeing out in front. Needs to be very smooth in his shoulder with a slope to his shoulder forward. Meaning the front point of this shoulder forward of his forearm and front leg. This is calving ease along with moderate birth weights. He must have a broad muzzle but not be extremely wide between the eyes. Ask the man that has used our bulls for 20 to 40 years and he will tell you he doesn't pull calves unless backward, leg back, upside down, or some other irregular birth.

We breed trouble-free cattle, proven with our line-breeding program, cattle with extra length and strong, straight tops to give them more pounds and carcass premiums up to \$260 per head.

O'Neill cattle are designed to make a profit for serious minded, registered breeders and commercial cattlemen alike. We wish to thank our many customers over the years, for you are the ones that have made our cattle proven from test station, feed efficient with rate of gain, winning shows and topping sales and carcass premiums.

A group of steers by an Expedition son out of O'Neills Royal Lady 28 outweighed their three weeks to a month older contemporaries by major AI Stud bulls by 140 lbs. at 10 to 12 months. The Expedition son was used as a cleanup bull so they were 3 weeks to 1 month younger. This bull was a full brother-in-blood to the dam of the \$50,000 O'Neills Frontiersman. The great-grandam of O'Neills Black Bardolier, O'Neills Blackhawk and O'Neills Black Bart is O'Neills Royal Lady 28. Royal Lady 28 and Royal Lady 29 are full sisters to Royal Lady 42 that produced the highest weight per day of age at the 2015 Midland Bull Test #2 out of 370 head for Deppe Angus in Iowa.

O'Neills Expedition 398, a son of O'Neills Expedition, sired the Pen of 8 Steers that had the highest combination of Feed-Efficiency and Rate of Gain in the 2011 Tri-County Steer Carcass Futurity to place 2nd overall in all other categories. They competed against over 9,000 steers from all over the country. Many were sired by the popular major bull stud bulls.

At the 2012 Tama ICA Test the Top Gainer at 5.34 lbs. was out of an O'Neill bred cow, the second top gainer was out of O'Neills Expedition at 5.24 lbs. and the third top gainer was out of an O'Neill bred cow with 5.10 lbs. At the 2013 Dunlap ICA Test the top gainer and top-indexing bull of the Angus Breed was sired by an O'Neill Angus sire, O'Neills Bando Boy and went on to be High-selling Bull of All Breeds. O'Neills Bando Boy still holds the record for siring the High Gaining Bull of All Breeds at 6.22 lbs. in the 31 year history of the ICA Tests.

At the 2012 IBEP Winter Test at Purdue University Indiana, 182 bulls entered. The Top Carcass Merit Indexing Bull over all breeds was sired by O'Neills Envious Lad. He had a 365-day Adjusted IMF of 6.66 with a 141 ratio and % Retail Product 67.2 with a 102 ratio and a Carcass Merit Index of 121.3.



Grand Champion Bred & Owned at the Nebraska State Junior Show. 2012 Grand Champion Female at both Nebraska State Fair and Ak-Sar-Ben Livestock Show. Shown by Savannah Schafer and sired by O'Neills Bando 368.

Mission Statement for O'Neill Angus Farm Founded 1951

Our mission at O'Neill Angus, since our beginning in 1951, has been to select for feet, legs, fertility, longevity, excellent udders and fleshing ability to produce cattle that will convert roughage to beef and excel in the feedlot. Following these basics enable cattle to breed consistently. We believe in selecting great females, stacking them in a pedigree out of top sires out of our best females, and concentrating that blood to get the most pounds and feed efficient cattle possible that are structurally correct to produce Angus cattle that will make a profit for all segments of the industry.

Jim O'Neill

We are extremely proud and wish to thank Maifeld Angus in Iowa for their many years as a customer. They run around 1,300 cows and have been using our genetics for the past 12 years. They have a contract with a purveyor that gives them a premium of \$28 per hundred over the average dressed beef price in a five state area. This is on all steers and heifers with an average grade of 99.7% Choice and Prime with high cutability and exceptional payweights and dressing percentages at 13 to 15 months with carcasses averaging 870-880 lbs. with premiums up to \$260 per head.

**2015 Midland Bull Test
Top Weight-per-Day of
age bull in test #2
370 head was won by
Dennis Deppe of Iowa on a
bull from O'Neills Royal Lady
42, a full sister to O'Neills
Royal Lady 28 and O'Neills
Royal Lady 29.**

NEWS FLASH!



BLELACK LADY ERALINE J258 - Congratulations to Neal and Graeme Massie of Blelack Angus on their record-selling Angus female in Scotland during the October 2016 Blelack Sale where Blelack Lady Eraline J258 was the 35,000 gns top-seller, and was produced from an embryo purchased from O'Neill Angus Farm, sired by O'Neills Renovator from O'Neills Lady Eraline 100.

O'Neill Angus had the all-time high-selling embryos at \$2,700 each at the National Western Foundation Female Sale in 2015, since its beginning, out of O'Neills Delia 720, Expedition's full sister.

**EXTRA MUSCLE • BIG BUTTS • EXCELLENT FEET •
FERTILITY • LONGEVITY • VOLUME • CALVING-EASE •
EXTRA POUNDS • FEED-EFFICIENCY • CARCASS PREMIUMS
UP TO \$200 PER HEAD • BULLS SIRING
FEMALES/EXCELLENT UDDERS & MILK •
WITH FLESHING ABILITY**

**Buy with confidence from a herd breeding ONLY Angus Cattle for 63 years.
Cattle bred to make a PROFIT for the Beef Industry!**



PRST First Class
US Postage
PAID
Boelte-Hall Inc.
66205



AMERICAN ANGUS HALL OF FAME
at the WORLD ANGUS HEADQUARTERS
Box 660, Smithville, MO 64089-0660.
Phone: (816) 532-0811
Fax: (816) 532-0851
E-mail angushall@earthlink.net
www.angushall.com



O'Neill Angus Farm

Cow Herd Dispersal



J.C. O'Neill ©

ONEILLS ROYAL LADY 90 - Lot 1



ONEILLS BLACK BARDOLIER

Noon • Saturday • December 3, 2016 • Logan, Iowa

Donor Cows • Cow/Calf Pairs • Heifer Calves • Bull Calves
Yearling and Two-Year-Old Bulls • Herd Sires • Embryos • Semen